



National Technical Systems Test Report for Environmental Testing of the ClearAccess

Prepared For

Pro V&V, Inc | 1736 Vista View Drive | Longmont, CO 80504

Performed By

National Technical Systems | 1601 Dry Creek Drive, Suite 2000 | Longmont, CO 80503 | 303-776-7249 | www.nts.com

A handwritten signature in black ink, appearing to read "Andrew Garcia", written over a horizontal line.

Andrew Garcia
Preparer

A handwritten signature in black ink, appearing to read "John Hill", written over a horizontal line.

John Hill
Program Manager

This report and the information contained herein represents the results of testing of only those articles/products identified in this document and selected by the client. The tests were performed to specifications and/or procedures approved by the client. National Technical Systems ("NTS") makes no representations expressed or implied that such testing fully demonstrates efficiency, performance, reliability, or any other characteristic of the articles being tested, or similar products. This report should not be relied upon as an endorsement or certification by NTS of the equipment tested, nor does it present any statement whatsoever as to the merchantability or fitness of the test article or similar products for a particular purpose. This document shall not be reproduced except in full without written approval from NTS.



Revision History

Rev.	Description	Issue Date
0	Initial Release	02/28/2022

Table of Contents

1.0	Introduction	4
2.0	References	4
3.0	Product Selection and Description.....	4
3.1	Security Classification	4
4.0	General Test Requirements.....	4
4.1	Test Equipment	4
5.0	Test Descriptions and Results.....	5
5.1	Environmental Temperature Power	6
5.1.1	Test Procedure	6
5.1.2	Test Result	6
5.1.3	Test Datasheets	6
5.1.4	Test Photographs	7
5.1.5	Test Data.....	8
5.1.6	Test Equipment List.....	10

List of Tables

Table 3.0-1: Product Identification - Equipment Under Test (EUT)	4
Table 5.0-1: Summary of Test Information & Results	5
Table 5.1-1: Environmental Temperature Power Test Equipment List	10

1.0 Introduction

This document presents the test procedures used and the results obtained during the performance of an Environmental/Dynamics test program. The test program was conducted to assess the ability of the specified Equipment Under Test (EUT) to successfully satisfy the requirements listed in Section 2.0.

2.0 References

The following references listed below form a part of this document to the extent specified herein.

- Test Specification: Military Standard No. MIL-STD-810D
- Pro V&V, Inc Purchase Order(s) 2021-019, dated 11/30/2021
- National Technical Systems (NTS) Quote(s) OP0602148, dated 11/29/2021
- ISO/IEC 17025:2017(E) *General Requirements for the Competence of Testing and Calibration Laboratories*, dated 11/1/2017

3.0 Product Selection and Description

Pro V&V, Inc selected and provided the test sample(s) to be used as the Equipment Under Test.

Table 3.0-1: Product Identification - Equipment Under Test (EUT)

Item	Qty.	Name/Description	Part Number	Serial Number
1	3	ClearAccess	N/A	46001214VXML, AS21115292767, I19322853
2	3	ClearAccess	N/A	4600952318T24, AS2128290646, K193008671

3.1 Security Classification

Non-classified

4.0 General Test Requirements

4.1 Test Equipment

The instrumentation used in the performance of these tests is periodically calibrated and standardized within manufacturer's rated accuracies and are traceable to the National Institute of Standards and Technology. The calibration procedures and practices are in accordance with ISO 17025:2017. Certification of calibration is on file subject to inspection by authorized personnel.



5.0 Test Descriptions and Results

Table 5.0-1: Summary of Test Information & Results

Section	Test	Specification	Test Facility	Test Date	Part #	Serial #	Test Result
5.1	Environmental Temperature Power	MIL-STD-810D Method 502.2	Longmont	12/06/2021-12/09/2021	N/A	46001214VXML, AS21115292767, I19322853, 4600952318T24, AS2128290646, K193008671	Pro V&V will determine results.

The decision rule for Test Results was based on the Test Specification used for testing.



5.1 Environmental Temperature Power

5.1.1 Test Procedure

MIL-STD-810D Method 502.2.

5.1.2 Test Result

Pro V&V will determine results.

5.1.3 Test Datasheets

Test Log			
MJO No: PR150950		Customer: Pro V&V	Test Spec: MIL-STD-810D 502.2
		Temp Pwr Var Test	
Date	Time	Log Entry	Tech
12/6/21	9:00	Set VAC to 117vlt & ramp to +10c	NP
12/6/21	9:41	Start dwell at 117vlt & +10c for 4hrs	NP
12/6/21	13:47	Lower VAC to 105vlt & dwell for 4hrs	NP
12/6/21	17:57	Raise VAC to 129vlt & dwell for 4hrs	KM
12/6/21	21:57	Lower VAC to 117vlt & Raise temperature to +35c & dwell for 4hrs	KM
12/7/21	1:47	Lower VAC to 105vlt & dwell for 4hrs	KM
12/7/21	7:24	Raise VAC to 129vlt & dwell for 4hrs	NP
12/7/21	10:20	Lower VAC to 117vlt & Lower temperature to +10c & dwell for 4hrs	NP
12/7/21	14:20	Lower VAC to 105vlt & dwell for 4hrs	NP
12/7/21	18:20	Raise VAC to 129vlt & dwell for 4hrs	KM
12/7/21	22:20	Lower VAC to 117vlt & Raise temperature to +35c & dwell for 4hrs	KM
12/8/21	2:20	Lower VAC to 105vlt & dwell for 4hrs	KM
12/8/21	6:20	Raise VAC to 129vlt & dwell for 4hrs	NP
12/8/21	10:20	Lower VAC to 117vlt & ramp to +23c ambient	NP
12/8/21	10:20	Temperature and power variation portion of test has completed	KM
12/8/21	10:20	Test will continue to run at +23c ambient for another 37hrs	KM
12/9/21	2200	All Testing complete for a total of 85hrs	KM
		Note: All test pass or fail determinations decided by Pro V&V Inc.	

5.1.4 Test Photographs



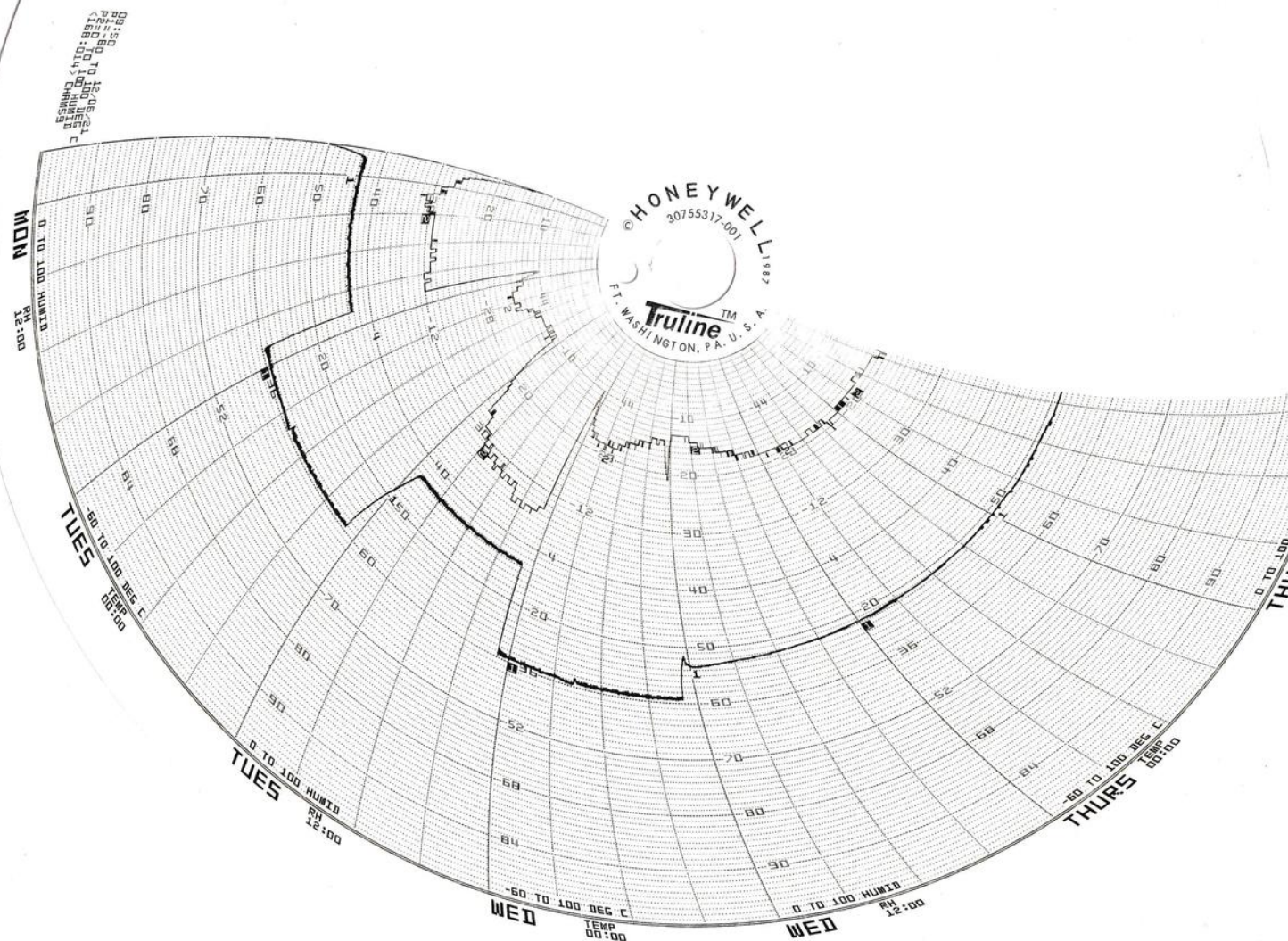
Setup View 1



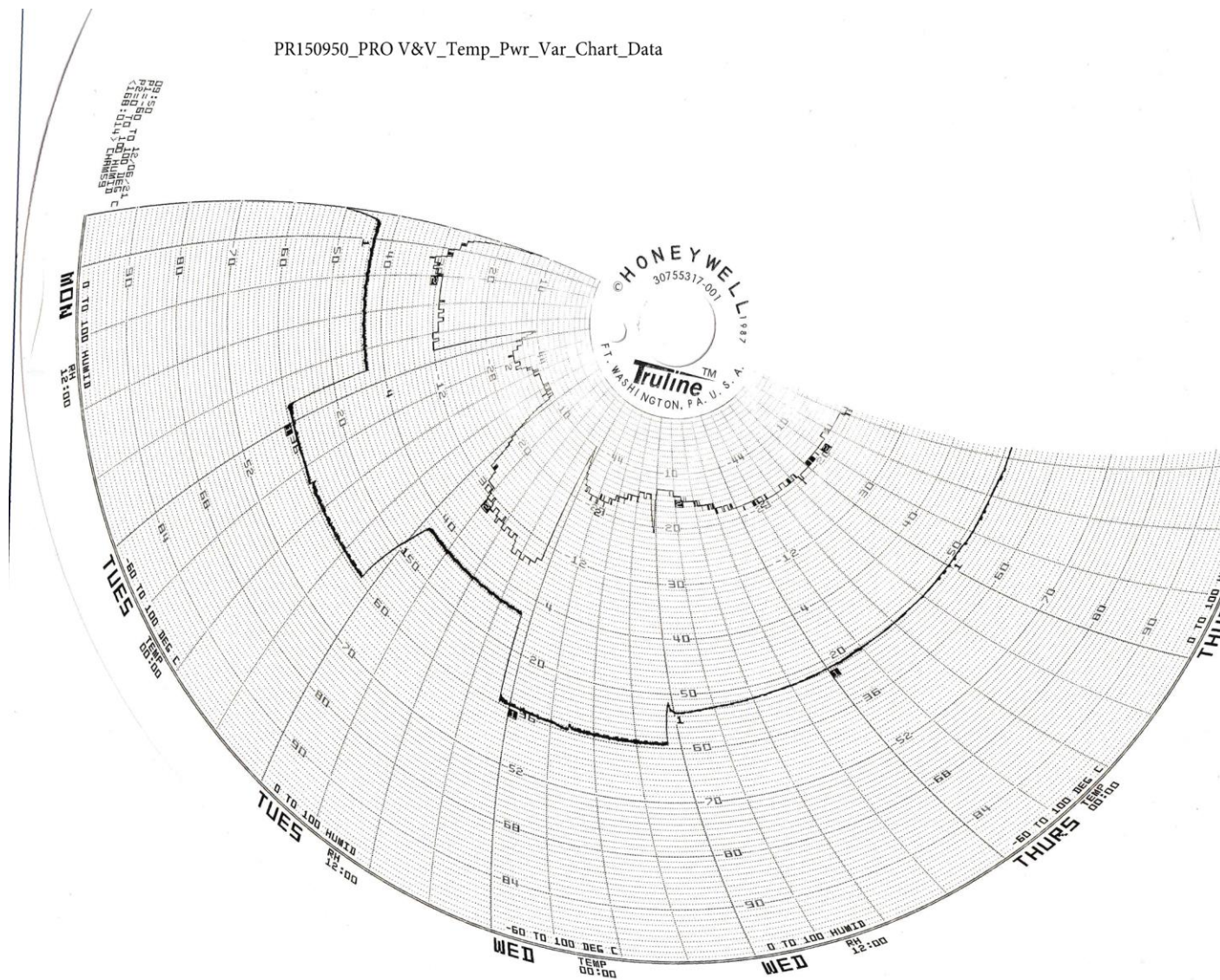
Setup View 2

5.1.5 Test Data

PR150950_PRO V&V_Temp_Pwr_Var_Chart_Data



PR150950_PRO V&V_Temp_Pwr_Var_Chart_Data





5.1.6 Test Equipment List

Table 5.1-1: Environmental Temperature Power Test Equipment List

Asset Number	Asset Type	Manufacturer	Model	Calibrated	Due
WC061559	Chamber (Temperature/Humidity)	StorageTek	Large Walk In	09/29/2021	09/29/2022
WC061560	Controller (Temperature)	Watlow	F4	09/29/2021	09/29/2022
WC061561	Recorder (Chart)	Honeywell	DR45AT	09/29/2021	09/29/2022

Calibration Abbreviations

CAL: Calibration

NCR: No Calibration Required



End of Test Report