



# Best Practices for Shutting Down DS200 While Leaving Polls Open

**Product Advisory:** FYIDS2000045

**Product:** DS200

**Versions Affected:** All EVS versions

**Publication Date:** May 20, 2016

**Distribution:** External

## QUESTION:

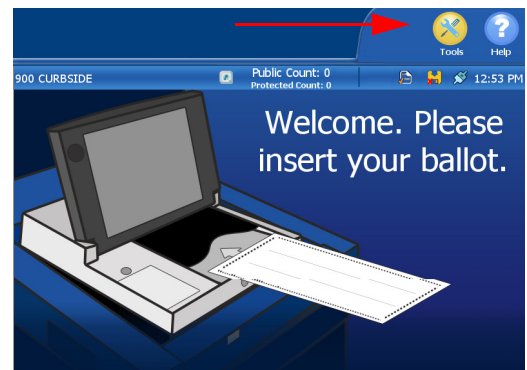
My jurisdiction has early or extended voting over several days and we want to shut down our DS200s at the end of each day. What is the best way to power down the DS200 while leaving the polls open?

## SOLUTION:

The DS200 provides two ways to power down the unit without closing the polls. Method 1 requires entering the election code. Method 2 requires unlocking the USB access door.

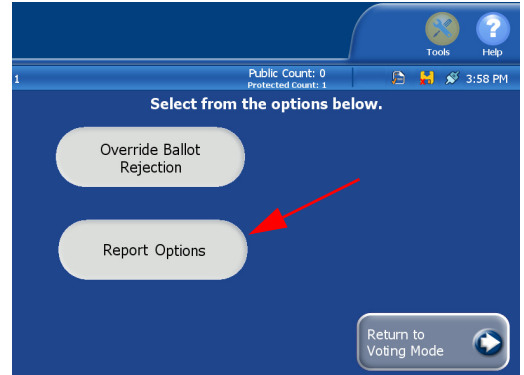
### Method 1

1. On the ballot insertion screen, press the **Tools** icon in the top right corner of the screen.
2. On the Enter Election Code screen, enter the election code and press **Accept**.

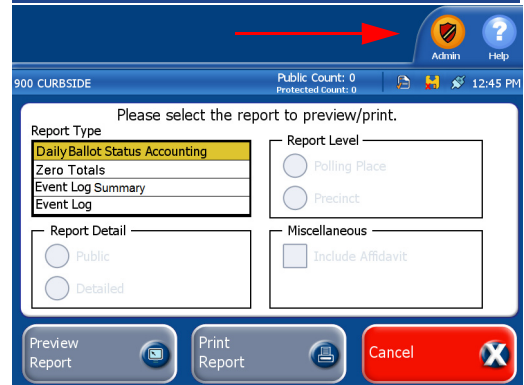


Released: (month year)

3. On the following screen, press **Report Options**.



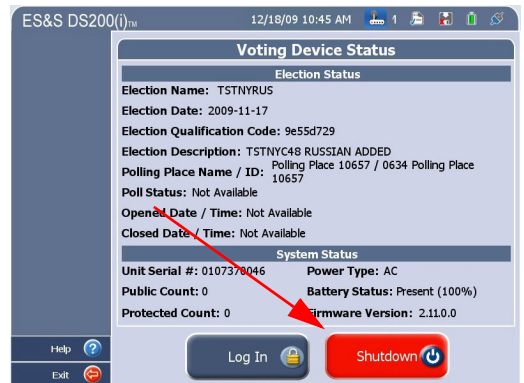
4. On the reports listing screen, press the **Admin** icon in the top right corner of the screen.



5. On the following screen, press **Shutdown**.

6. Wait for the scanner to completely power down before closing and locking the touch screen.

When you are ready to resume voting, unlock and open the touch screen. If permitted by your election definition, the scanner will then automatically power on again.



## Method 2

Unlock and open the DS200 access door.

1. Press the CLOSE POLL button.

### Note



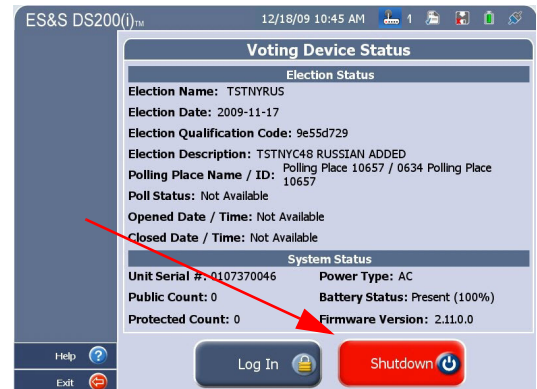
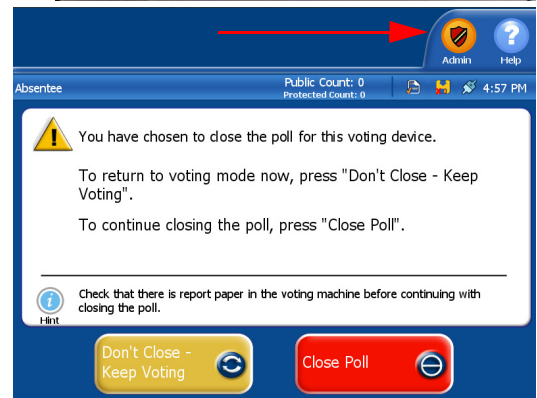
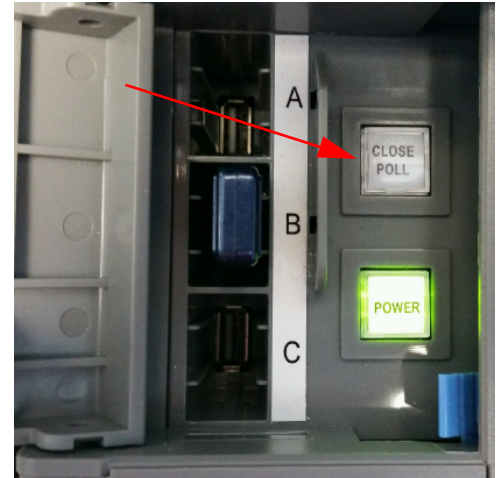
Do not use the POWER button to shutdown the DS200. The POWER button is used to start up the DS200, or to restart the DS200 if the screen becomes unresponsive.

2. On the following screen, press the **Admin** icon in the top right corner of the screen.

Do NOT press **Close Poll**.

3. On the following screen, press **Shutdown**.
4. Wait for the scanner to completely power down before closing (and locking) the screen.

When you are ready to resume voting, unlock and open the screen. If permitted by your election definition, the scanner will then automatically power on again.



## ES&S SUPPORT

For additional technical support, contact ES&S.

**Telephone:** 877-377-8683 (USA & Canada)

**Fax:** 402-970-1285

**Write:** Election Systems & Software  
11208 John Galt Blvd  
Omaha, NE 68137 USA

ES&S support services are subject to the prices, terms, and conditions in place at the time of service.