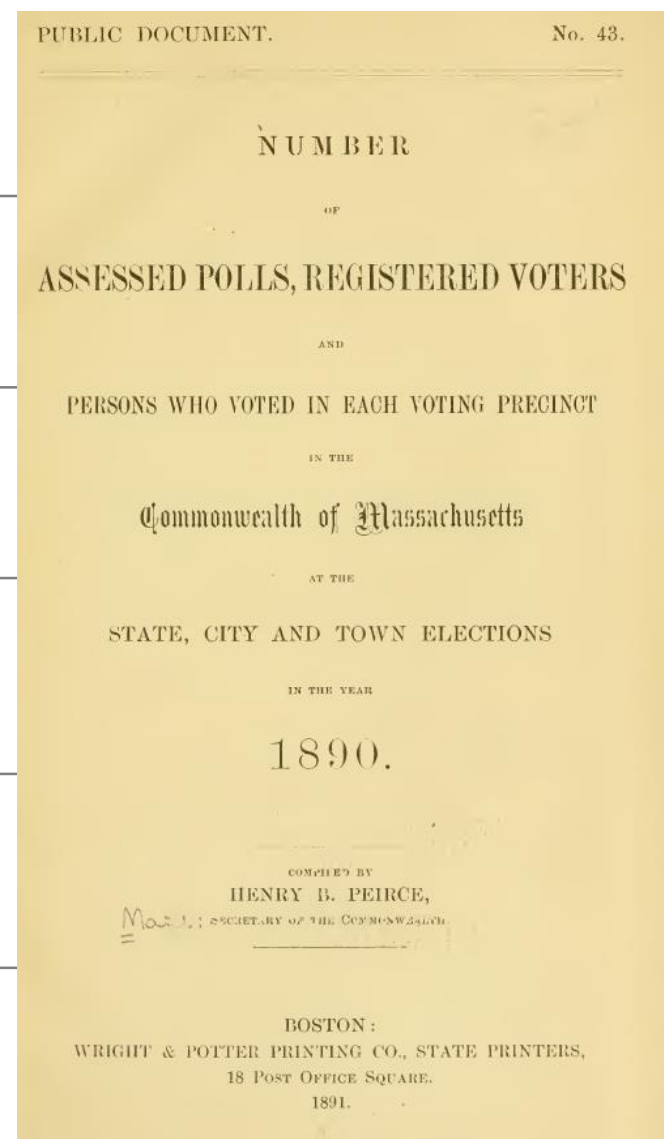
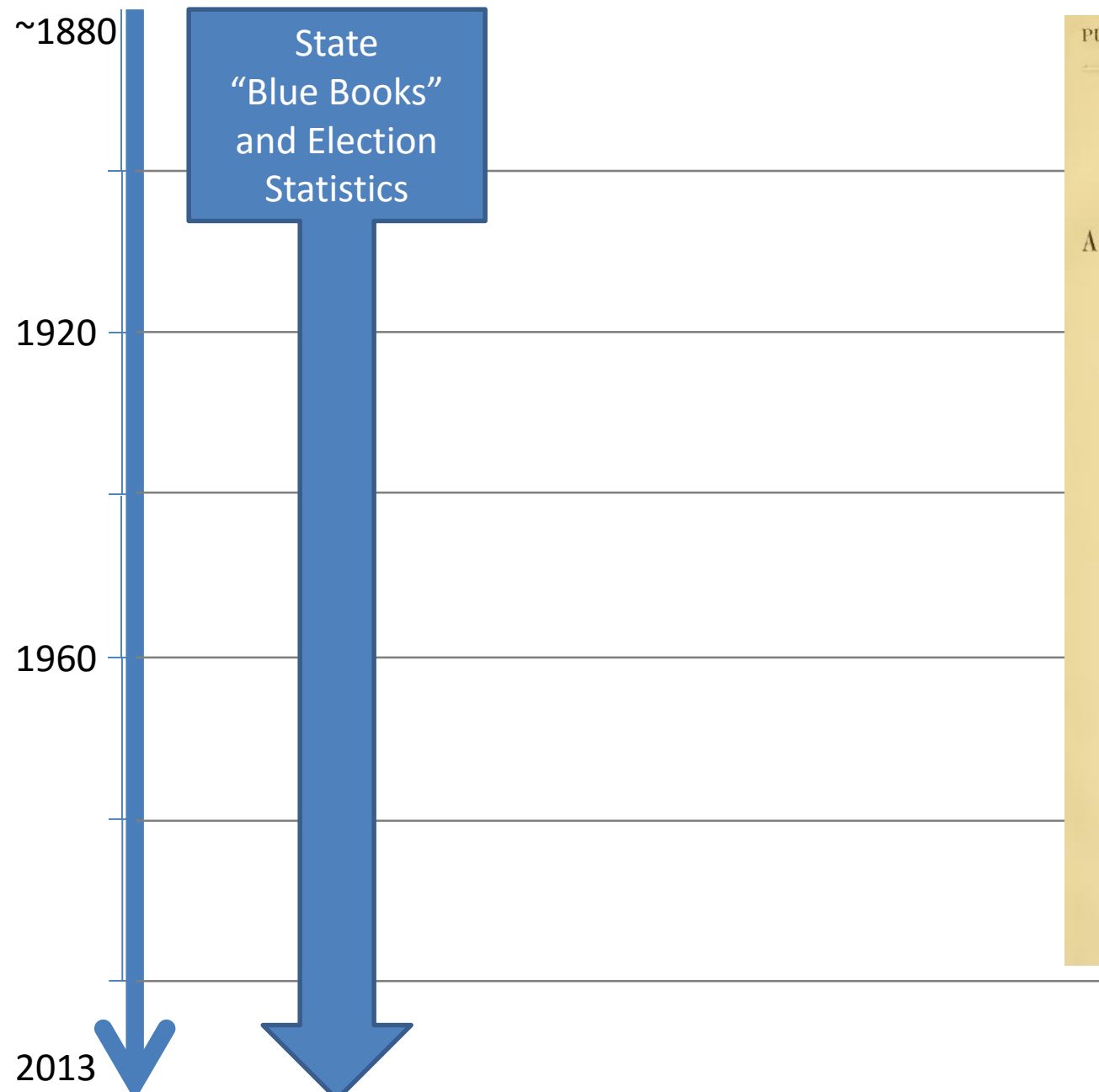


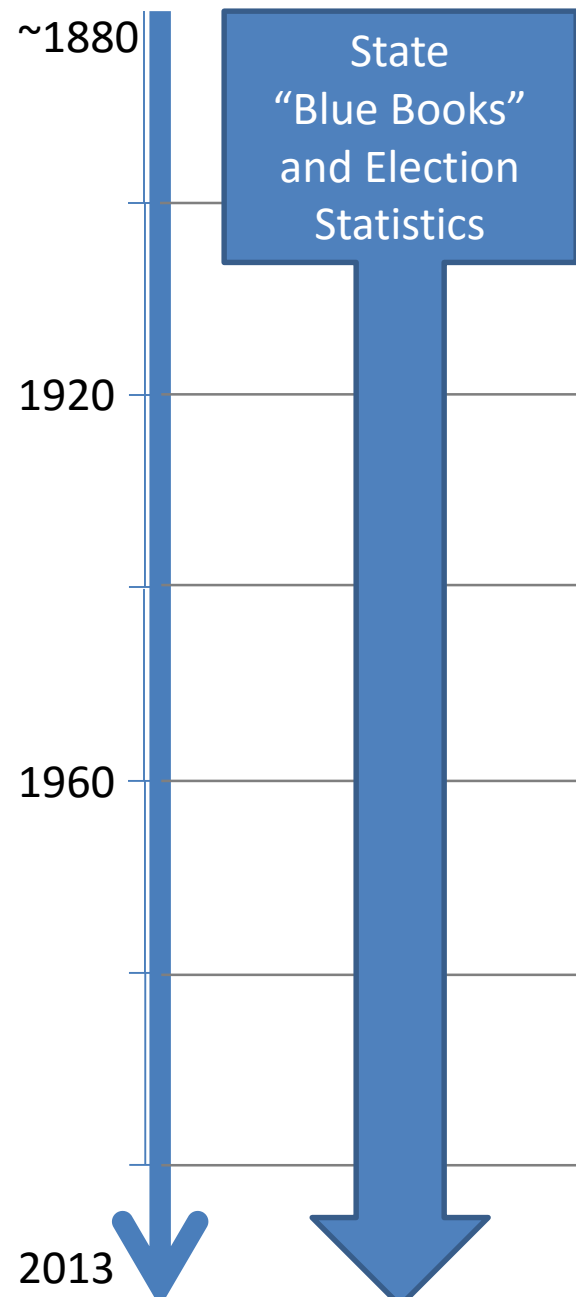
# The Election Administration and Voting Survey: A User's View

Charles Stewart III

MIT

August 8, 2013

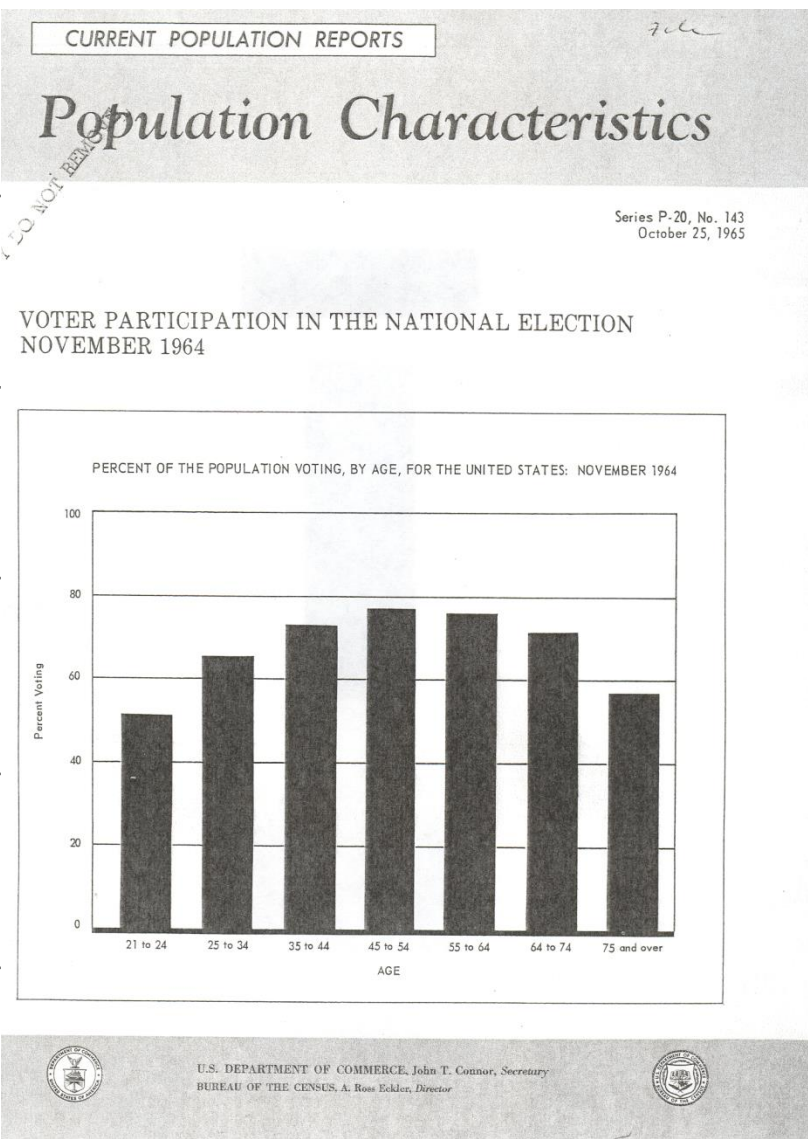
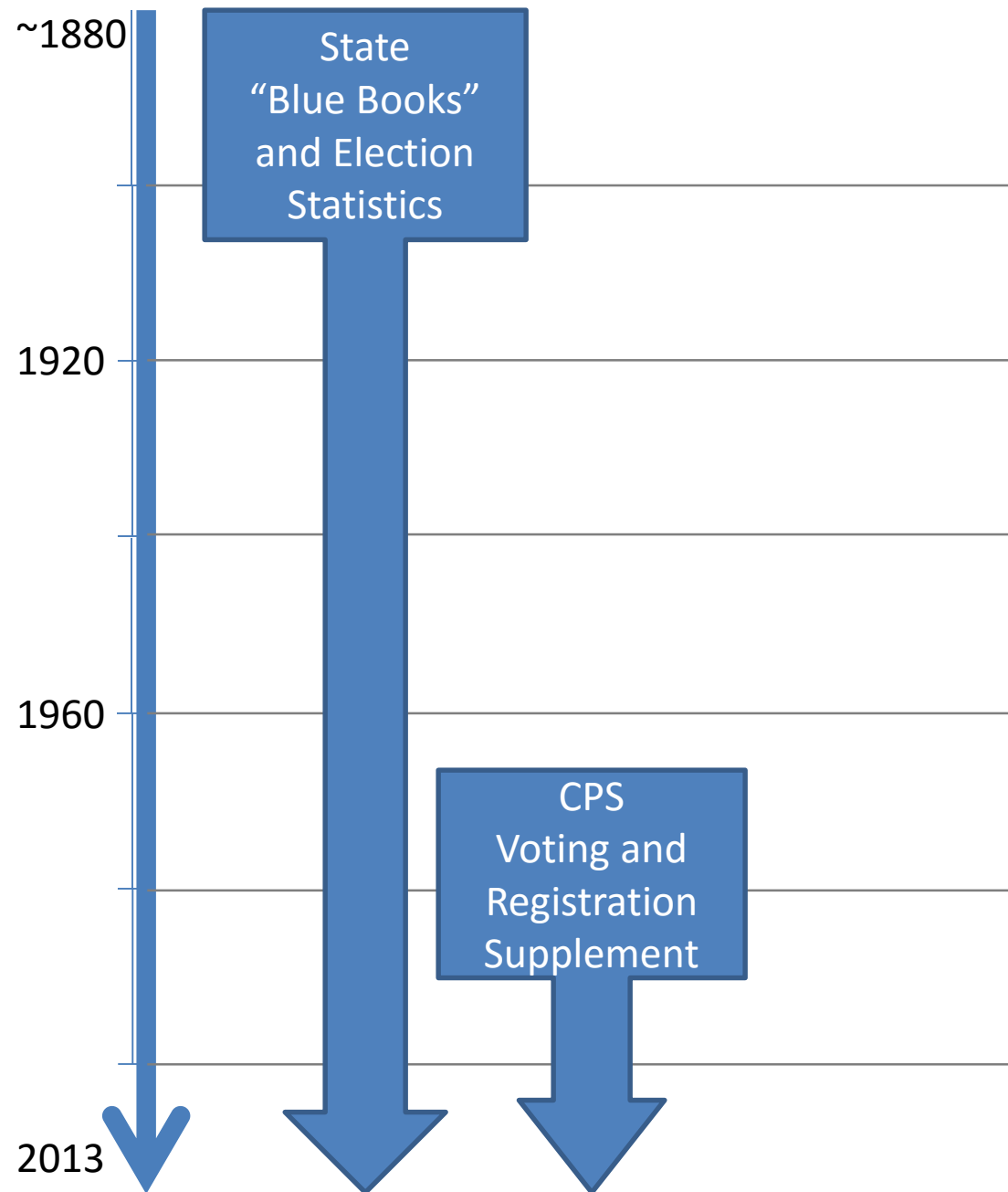




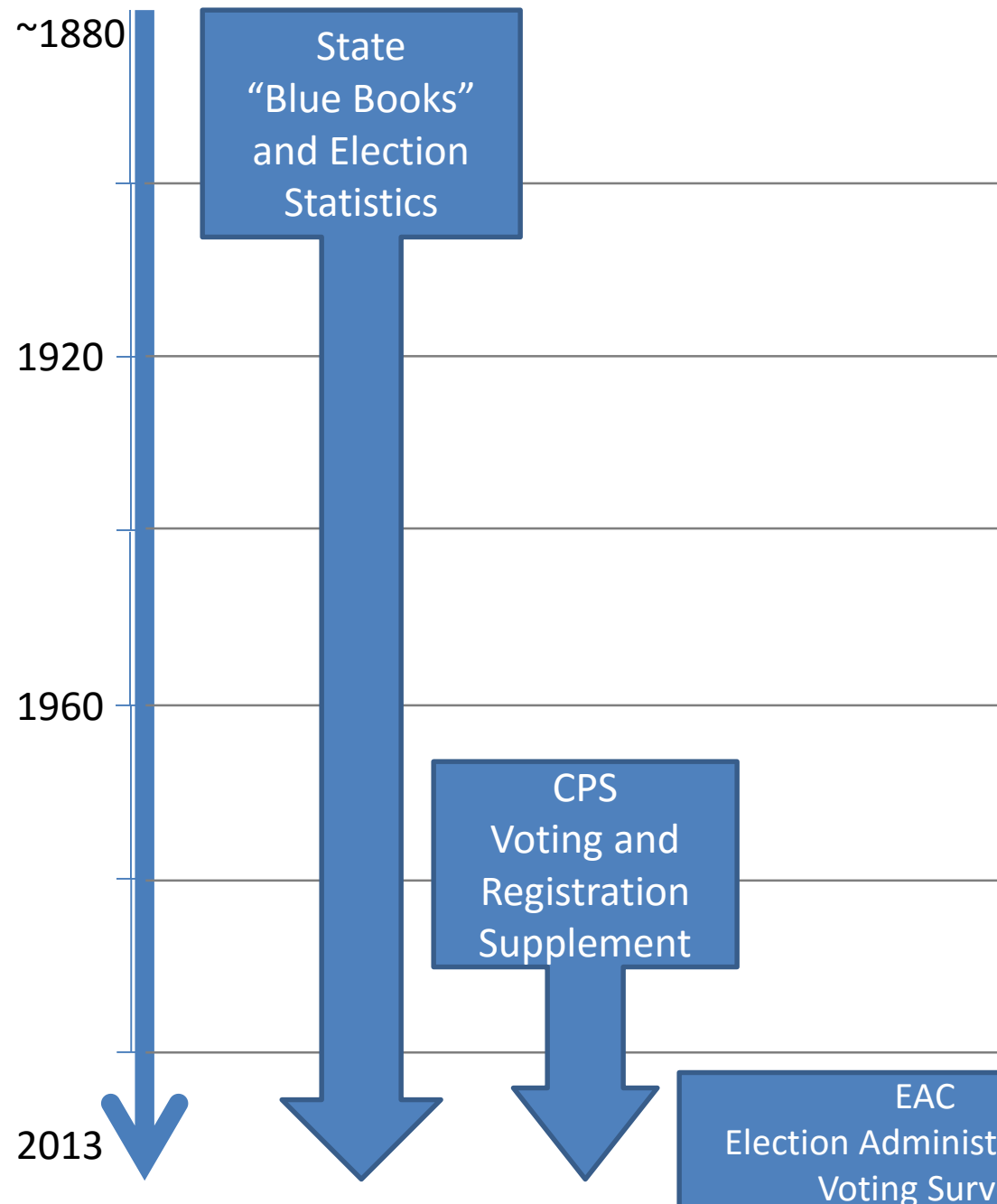
12 ASSESSED POLLS, ETC. [Jan.

NUMBER OF ASSESSED POLLS, REGISTERED VOTERS AND PERSONS WHO VOTED AT ELECTIONS.

CITIES, WARDS AND VOTING PRECINCTS.	STATE ELECTION (NOV. 4, 1890).			Date of Election.	CITY ELECTIONS (DECEMBER, 1890).					
	As-sessed Polls.	Registered Voters.	Persons who voted.		Assessed Polls.		Registered Voters.		Persons who voted.	
					Male.	Fe-male.	Male.	Fe-male.	Male.	Fe-male.
<b>BOSTON.</b>										
Ward 1, Pt. 1.	666	298	229	Dec. 9,	606	8	334	6	294	4
" 1, " 2.	495	293	225	9,	495	93	301	75	250	71
" 1, " 3.	462	297	242	9,	462	113	309	97	266	89
" 1, " 4.	530	355	296	9,	530	119	373	103	310	100
" 1, " 5.	513	338	281	9,	513	115	354	98	307	96
" 1, " 6.	628	371	294	9,	628	137	385	96	313	94
" 1, " 7.	766	356	267	9,	766	47	388	34	316	29
" 1, " 8.	630	326	252	9,	630	46	355	32	311	32
" 1, " 9.	621	318	254	9,	621	66	345	46	292	42
Ward, .	5,311	2,952	2,340	-	5,311	744	3,144	587	2,668	557
Ward 2, Pt. 1.	651	365	298	Dec. 9,	651	17	388	13	326	12
" 2, " 2.	654	284	230	9,	654	23	303	17	296	16
" 2, " 3.	755	341	286	9,	755	33	379	29	310	26
" 2, " 4.	670	348	286	9,	670	15	379	20	329	29
" 2, " 5.	602	327	280	9,	602	18	340	17	300	16
" 2, " 6.	598	319	280	9,	598	11	350	11	303	10
" 2, " 7.	784	396	323	9,	784	31	430	23	346	23
Ward, .	4,694	2,380	1,983	-	4,694	148	2,578	126	2,189	123
Ward 3, Pt. 1.	556	415	353	Dec. 9,	556	109	427	148	342	137
" 3, " 2.	658	438	378	9,	658	74	442	72	342	65
" 3, " 3.	551	394	314	9,	551	65	401	75	302	71
" 3, " 4.	606	406	342	9,	606	9	412	9	316	8
" 3, " 5.	639	413	351	9,	639	17	427	24	337	23
" 3, " 6.	609	392	349	9,	609	8	391	3	343	3
Ward, .	3,659	2,458	2,087	-	3,659	342	2,590	331	1,982	307
Ward 4, Pt. 1.	549	347	312	Dec. 9,	549	43	363	43	300	41
" 4, " 2.	599	365	295	9,	599	123	394	106	307	100
" 4, " 3.	639	413	345	9,	639	104	429	83	340	80
" 4, " 4.	678	400	351	9,	678	92	413	48	352	45







**U.S. ELECTION ASSISTANCE COMMISSION**  
2012 Election Administration & Voting Survey

The ongoing process of improving America's election systems relies in part on having accurate data about the way Americans cast their ballots. In 2002, Congress chartered the U.S. Election Assistance Commission (EAC) to collect information on the state of American elections and make it widely available to policy makers, advocates, scholars, journalists and the general public. Since 2004, the Commission has sponsored a biennial survey as its primary tool for fulfilling that mission. We are pleased to present the 2012 Election Administration and Voting Survey, and we ask for your help in making it the most complete and accurate survey in its history.

The questions below ask for information about ballots cast; voter registration; overseas and military voting; Election Day activities; voting technology; and other important issues. The section concerning the Uniformed and Overseas Citizens Voting Act (UOCAVA) serves as the EAC's standardized format for state reporting of UOCAVA voting information as required by 42 U.S.C. §1973ff-1. States that complete and timely submit this section to the EAC will fulfill their UOCAVA reporting requirement under 42 U.S.C. §1973ff-1(c). Additionally, EAC is mandated by the National Voter Registration Act (NVRA) to collection information from states concerning the impact of that statute on the administration of Federal elections. With this information EAC is required to make a report to Congress and provide recommendations for the improvement of Federal and State procedures, forms, and other NVRA matters. States that timely respond to all questions in this survey concerning voter registration related matters will meet their NVRA reporting requirements under 42 U.S.C. § 1973gg-7 and EAC regulations.

The EAC recognizes the burden that asking for this data places on state and local election officials, and we have worked to minimize that burden as much as possible.

In advance, we thank you for your cooperation and look forward to answering any questions you might have.

**Information supplied by:**

Name		Title	
Office/Agency name			
Address 1			
Address 2			
City		State	Zip Code
E-mail address			
Telephone (area code and number)	Extension	Fax number (area code and number)	



~1880  
1920  
1960  
2013

State  
"Blue Books"  
and Election  
Statistics

CPS  
Voting and  
Registration  
Supplement

EAC  
Election Administration &  
Voting Survey

THE IMPACT OF THE NATIONAL VOTER REGISTRATION ACT, 2011-2012

**2012 Election Administration and Voting Survey**  
**Table 2a. Application Sources: Total Forms Received**

State	Election Juris. in Survey	Total Applications Received 2010 to 2012	Cases	Applications Received From Individual Voters								
				Mail Registration Applications			In-Person Registration Applications			Internet Registration Applications		
				Total	Cases	Pct.	Total	Cases	Pct.	Total	Cases	Pct.
Alabama	67	1,635,439	66	466,341	66	30.3	553,746	66	34.5	0	0	0
Alaska	1	249,863	1	60,477	1	24.2	90,698	1	36.3	0	1	0.0
Arizona	15	1,946,771	15	391,273	15	20.1	12,906	13	0.7	958,080	14	49.3
Arkansas	75	568,631	75	128,866	75	24.4	210,191	75	37.0	0	0	0
California	58	5,098,027	56	1,626,567	50	31.9	739,611	46	14.5	703,118	53	13.8
Colorado	64	2,363,775	64	529,230	64	26.1	204,942	64	9.9	475,154	64	23.0
Connecticut	169	477,373	169	156,727	169	36.7	126,013	169	30.0	0	0	0
Delaware	3	252,649	3	17,202	3	6.8	6,613	3	2.6	10,863	3	4.3
District of Columbia	1	146,814	1	11,643	1	8.0	7,559	1	5.2	19,810	1	13.6
Florida	67	1,635,498	67	312,953	67	19.5	302,046	67	18.9	0	0	0
Georgia	159	707,396	159	178,375	159	22.4	106,246	159	13.2	0	0	0
Hawaii	4	184,867	4	49,011	4	26.5	12,726	4	6.8	16,076	4	9.7
Idaho*	44	413,237	44	0	0	0	0	0	0	0	0	0
Illinois	110	2,265,495	110	430,093	110	20.8	558,055	108	27.1	0	0	0
Indiana	92	2,085,483	92	1,838	92	0.1	1,900	92	0.1	154,725	92	7.4
Iowa	99	2,534,560	99	51,509	99	2.0	78,564	99	3.1	0	0	0
Kansas	105	615,146	105	96,962	105	15.8	63,810	105	10.4	64,488	105	10.5
Kentucky	120	1,183,054	120	45,924	120	3.9	284,870	120	24.1	0	0	0
Louisiana	64	1,246,033	64	227,699	64	18.3	258,252	64	20.8	129,217	64	10.4
Maine	500	252,356	500	14,720	500	5.8	167,027	500	66.2	0	0	0
Maryland	24	2,678,449	24	540,547	24	20.2	65,509	24	2.4	134,323	24	5.0
Massachusetts	351	1,567,538	351	273,452	351	17.6	1	1	0.0	0	0	0
Michigan	83	2,775,398	83	120,513	83	4.3	279,962	83	10.1	0	0	0
Minnesota	87	1,262,404	87	97,387	87	7.6	828,114	87	64.6	0	0	0
Mississippi	64	276,582	64	62,606	64	29.9	106,500	64	39.2	80	26	6.0
Missouri	116	1,266,267	116	174,661	116	13.8	84,322	116	6.6	0	0	0
Montana	98	246,727	98	52,198	98	21.2	61,215	98	24.8	0	0	0
Nebraska	93	452,455	93	3,415	93	0.8	149,959	93	33.1	0	0	0
Nevada	17	490,095	17	113,200	17	23.1	18,071	16	3.7	50,886	17	10.4
New Hampshire*	320	680,241	320	2,498	320	0.4	677,743	320	99.6	0	320	0
New Jersey	21	1,211,641	21	56,527	21	4.6	8,232	21	0.7	0	0	0
New Mexico	33	413,241	33	8,674	33	2.1	14,710	33	3.6	0	4	0.0
New York	58	1,019,746	47	856,937	57	83.9	82,537	56	8.1	0	0	0
North Carolina	100	2,652,104	100	528,641	100	19.9	1,039,966	100	39.1	0	0	0
North Dakota*	53	0	0	0	0	0	0	0	0	0	0	0
Ohio	89	3,182,442	89	634,429	89	19.9	543,290	84	17.1	100,729	86	3.2
Oklahoma	77	563,770	77	170,081	77	30.2	132,997	77	23.6	0	0	0
Oregon	36	808,425	36	128,831	36	17.3	173,300	36	21.7	201,196	36	25.1
Pennsylvania	67	3,246,470	67	479,296	67	14.8	68,773	67	2.1	14	67	0.0
Rhode Island	39	119,435	39	19,674	39	16.5	23,620	39	19.8	0	0	0
South Carolina	46	1,426,202	46	432,511	46	30.3	360,561	46	25.3	17,040	46	1.2
South Dakota	68	108,178	62	18,642	68	17.2	37,989	68	35.1	216	66	0.7
Tennessee	95	943,369	95	210,511	94	25.0	125,579	94	14.9	0	0	0
Texas	254	1,196,290	9	3,531,674	254	0	1,004,607	254	0	0	0	0
Utah	29	1,196,290	29	211,267	29	17.7	0	0	0	143,046	29	12.0
Vermont	246	65,587	219	8,815	206	13.4	20,522	203	31.3	169	162	0.3
Virginia	134	3,020,073	134	773,937	134	25.6	258,494	134	8.6	0	0	0
Washington	39	1,129,472	39	132,782	36	11.8	34,059	39	3.0	148,848	39	13.2
West Virginia	56	299,545	56	41,320	56	14.3	32,656	56	11.3	0	0	0
Wisconsin*	3,541	1,082,040	3,541	39,065	3,541	3.6	129,847	3,541	12.0	0	0	0
Wyoming*	23	93,359	23	1,750	23	1.9	89,427	23	95.8	0	0	0
American Samoa*	1	7,730	1	0	0	0	7,704	1	99.7	26	1	0.3
Guam*	1	5,168	1	0	0	0	5,168	1	100.0	0	0	0
Puerto Rico*	1	2,989,120	1	201	1	0.0	0	0	0	0	0	0
Virgin Islands*	0	0	0	0	0	0	0	0	0	0	0	0
Sum of Above	6,131	62,531,964	7,763	14,562,432	7,863	23.3	16,255,299	7,467	16.4	3,329,216	1,324	5.3
States Included	52		50		50		50		24			
Question		Asa		Asa			Asb		Asc			



# The EAVS

- Arises from EAC mandates
- Unique data resource
  - National in scope
  - State and local data
  - Allows comparisons
- Comprehensive view of election administration
  - Voter registration
  - UOCAVA
  - Domestic civilian absentee ballots
  - Election administration (precincts, poll workers, etc.)
  - Provisional ballots
  - Election Day activities (turnout, election tech.)



# Voter registration activity (Table 2)

	2007-08	2009-10	2011-12
Registration forms processed	60.0m	45.5m	59.5m
New registrations processed	24.5m	14.4m	23.6m
New registrations/ forms processed	42%	34%	33%
Removals from lists	12.3m	15.0m	13.7m
Address changes	23.5m	21.8m	30.7m
Address changes / forms processed	34%	50%	44%

# National findings from 2012 EAVS

- UOCAVA ballots
  - 861k mailed out
  - 601k returned for counting → 70% return rate
  - Down from 960k mailed out and 702k returned (73% rate) for 2008
- 3.5% of returned ballots rejected (down from 4.2%)
  - 42% due to lateness (53% in 2008)
  - 14% due to signature problems (12% in 2008)

# National findings from 2012 EAVS

- Civilian absentee ballots
  - 32.8m mailed out
  - 27.3m returned for counting → 83% return rate
  - Up from 29.2m mailed out and 26.1m returned in 2008 (90% return rate)
    - Decline in return rates is isolated in jurisdictions with permanent absentee lists (77% vs. 87%)
  - 2.9% of returned ballots rejected (down from 3.1%)
    - 33% due to lateness (22% in 2008)
    - 36% due to signature problems (22% in 2008)

# National findings from 2012 EAVS

- Election Day logistics
  - 171k precincts (189k in 2008)
  - 99k Election Day voting places (115k in 2008)
  - 2,500 early voting locations (same as 2008)
  - 750k poll workers (877k in 2008)
  - 689 voters/E.D polling place (671 in 2008)
  - 1,111 voters/Early voting center/day

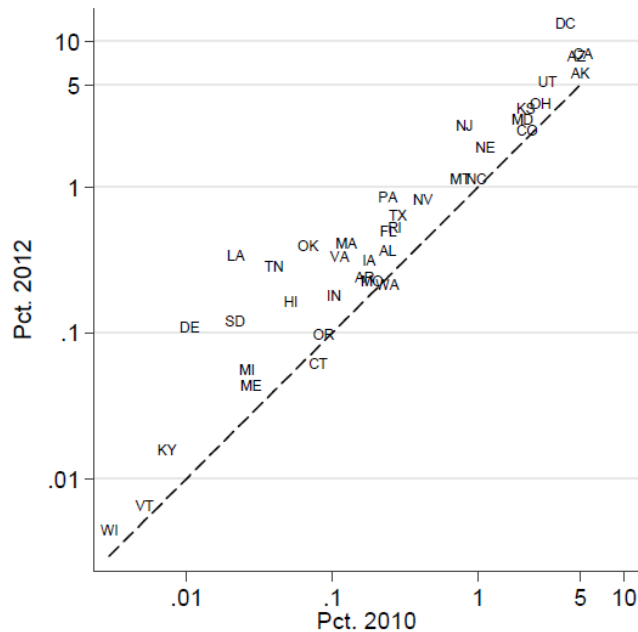
# National findings from 2012 EAVS

- Provisional ballots
  - 2.6m distributed (2.0% of in-person ballots)
  - 1.9m counted → 74% counting rate
  - Up from 2.1m distributed in 2008 (1.5% of in-person ballots) and 1.4m counted (68% rate)

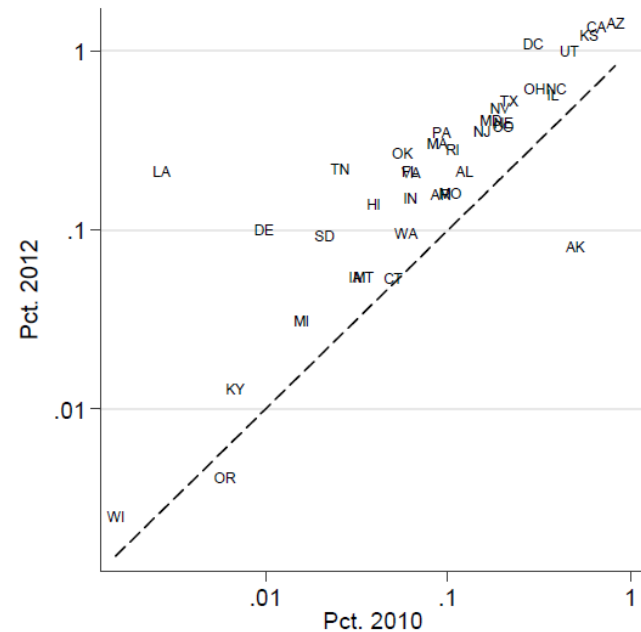
# Interstate variability

**Figure 1. Provisional ballot usage by state, 2010 and 2012**

A. Provisional ballots issued, as percentage of all ballots cast



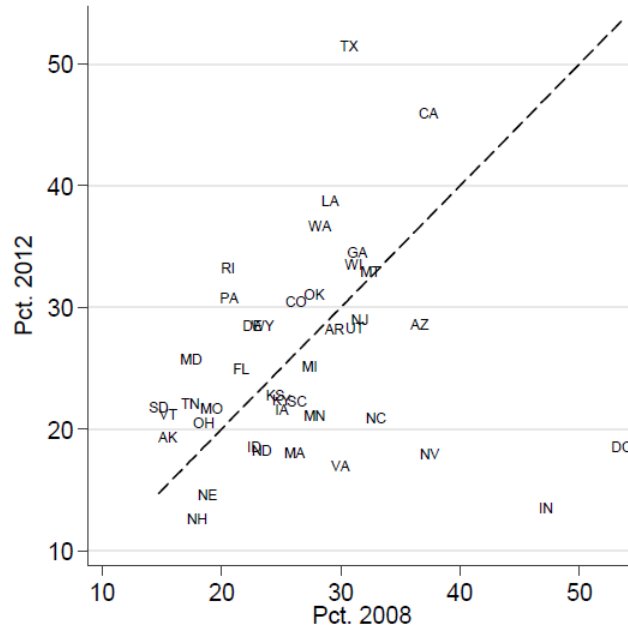
B. Provisional ballots rejected, as percentage of all ballots cast



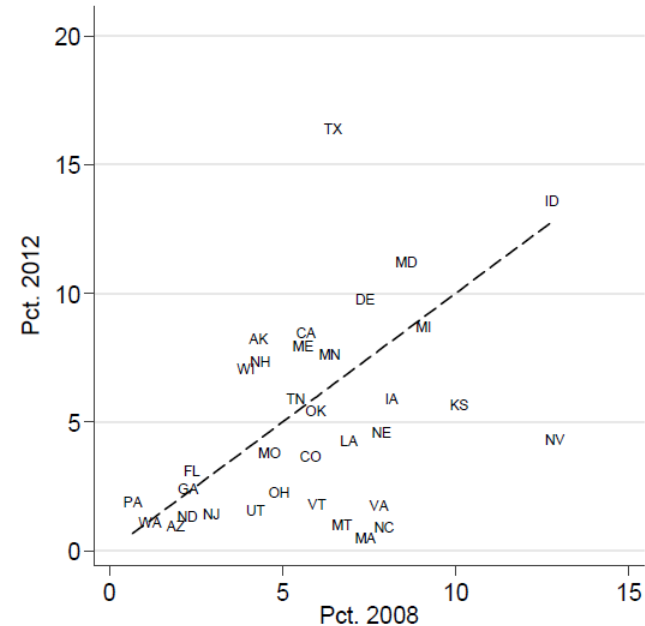
# Interstate variability

Figure 2. UOCAVA ballot return and rejection rates, 2010 and 2012

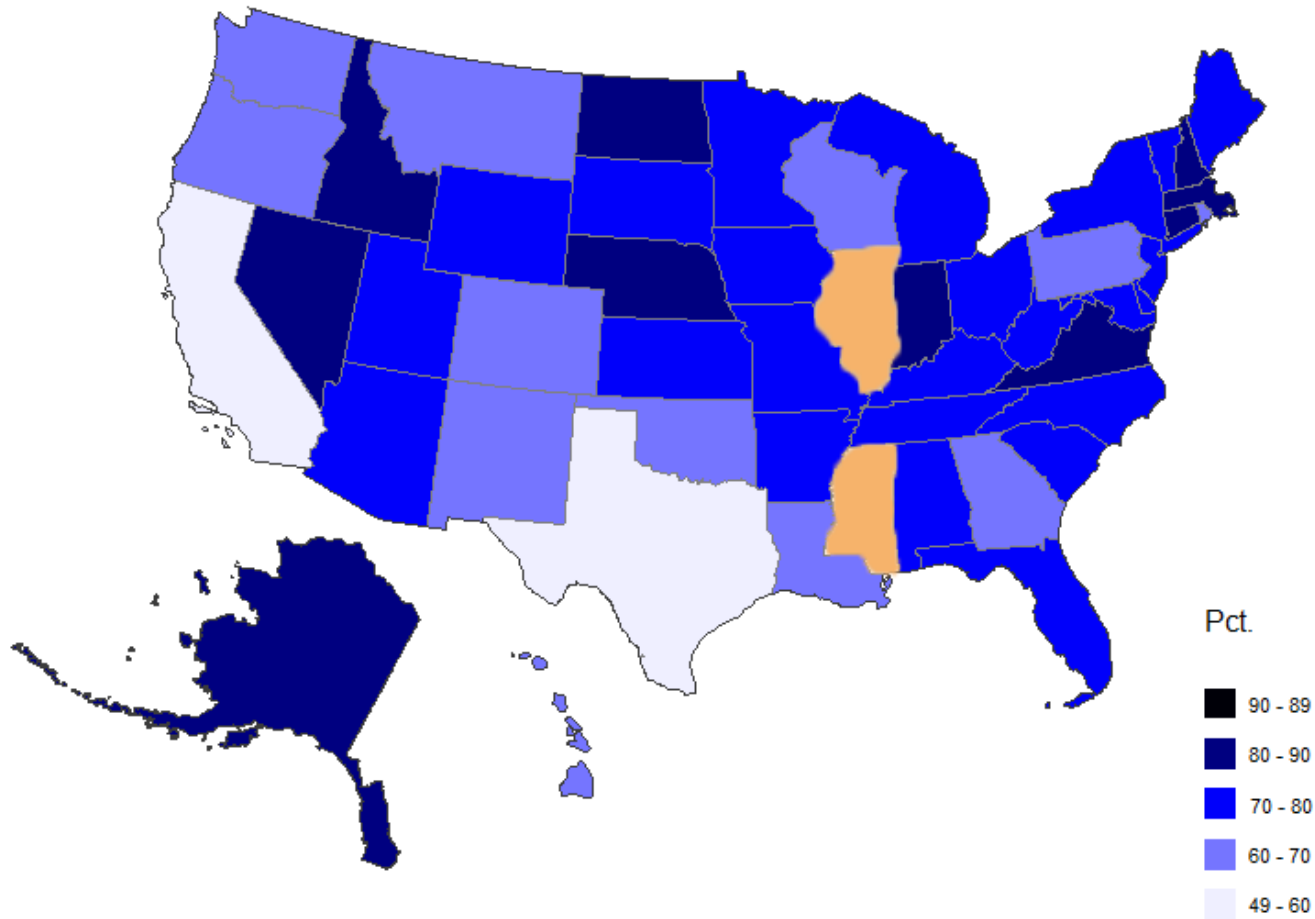
**A. UOCAVA ballots not returned**  
(as a percentage of ballots mailed to UOCAVA voters)



**B. UOCAVA ballots rejected**  
(as a percentage of ballots returned for counting)



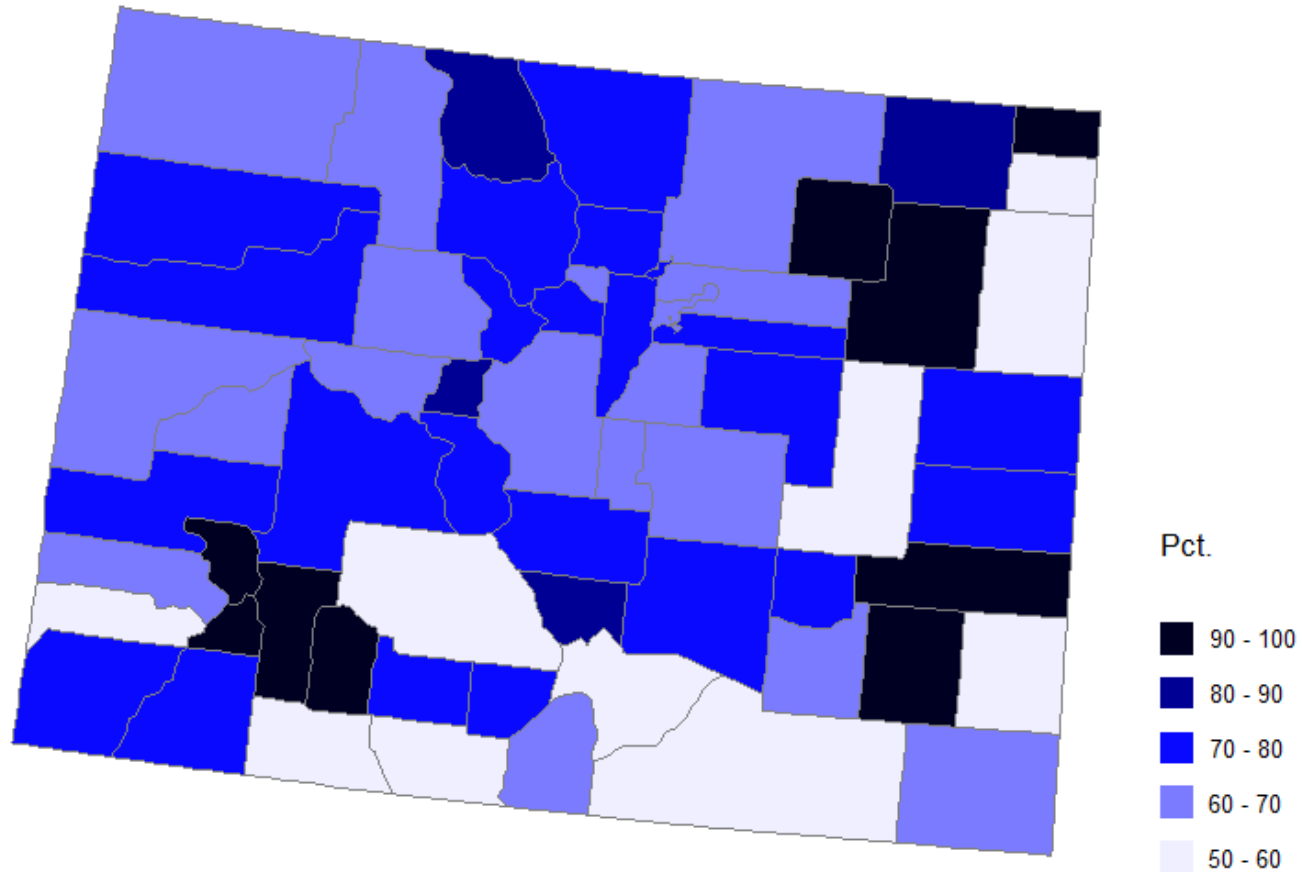
# *Intrastate variability*



UOCAVA ballots returned for counting, nationwide



# *Intrastate variability*

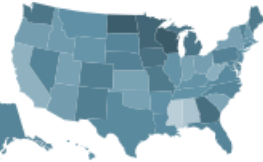


UOCAVA ballots returned for counting, Colorado

# Elections Performance Index



HOW DOES THIS WORK?



- Absentee Ballots Rejected
- Absentee Ballots Unreturned
- Data Completeness
- Disability- or Illness-Related Voting Problems
- Military and Overseas Ballots Rejected
- Military and Overseas Ballots Unreturned
- Online Registration Available
- Post-election Audit Required
- Provisional Ballots Cast
- Provisional Ballots Rejected
- Registration or Absentee Ballot Problems
- Registrations Rejected
- Turnout
- Voter Registration Rate
- Voting Information Look-Up Tools Available
- Voting Technology Accuracy
- Voting Wait Time

SELECT ALL    Deselect All

SELECT A YEAR

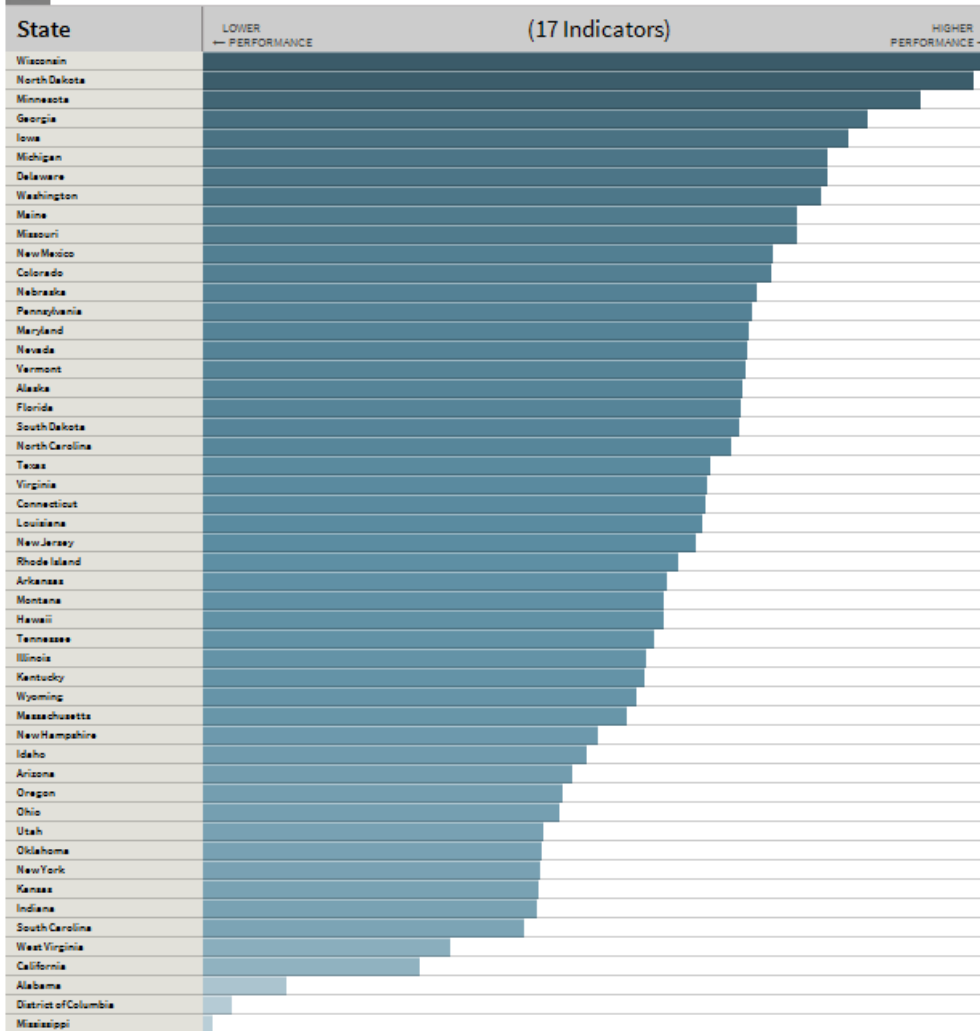
2008

2010

BARGRAPH VIEW

TABLE VIEW

#



# Closing Thoughts

- The use of metrics to guide election administration is growing, but still in its infancy
- EAVS only comprehensive, national election administration data gathering effort
- EAVS quality is improving
- The EAC's uncertain future threatens the EAVS