



Orange County Registrar of Voters

Neal Kelley Provisional Voting

Neal Kelley, Orange County Registrar of Voters, visit us at ocvote.com



Provisional Voting

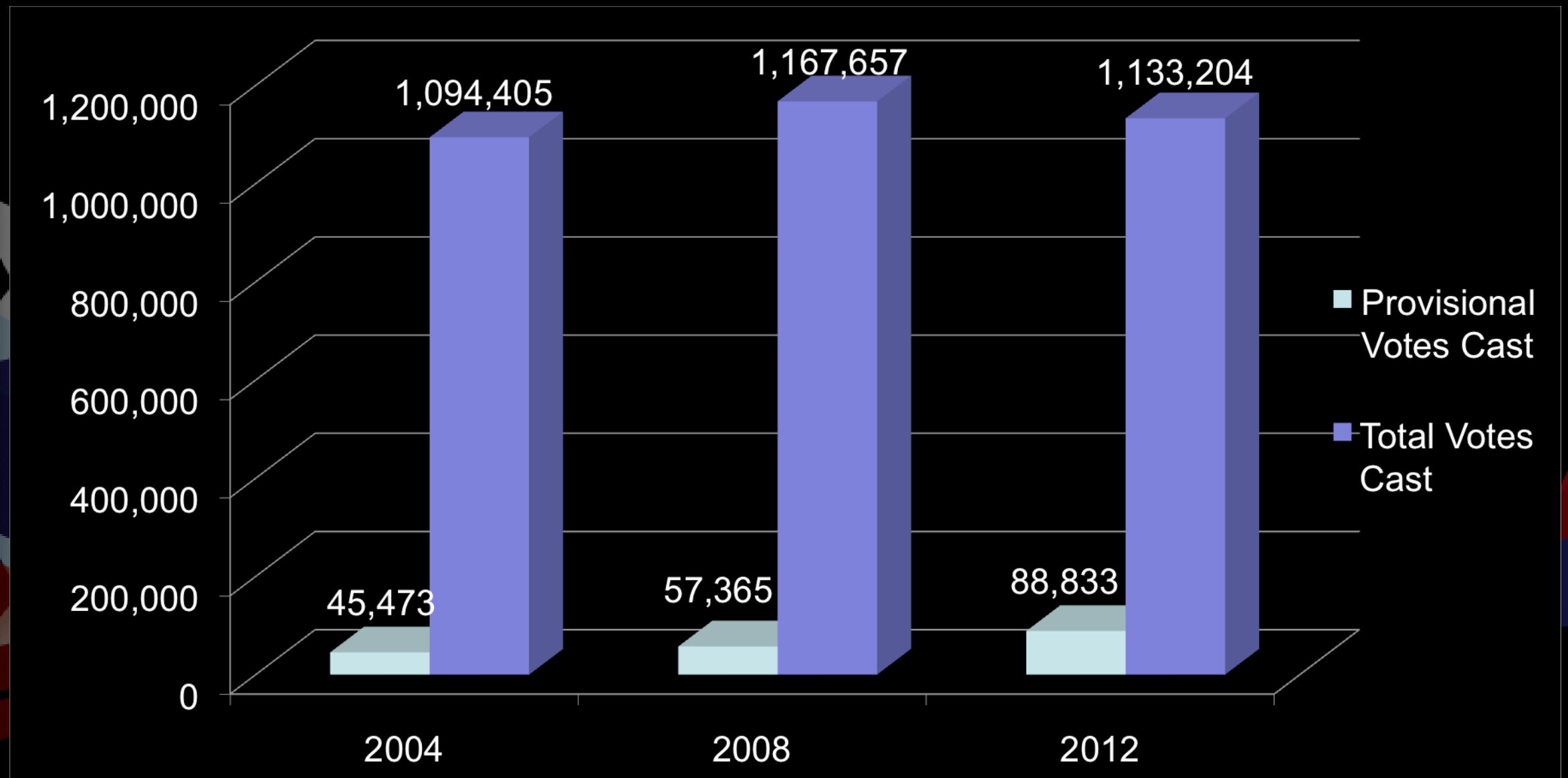
Common Types of Provisional Voters

- Provisional
 - Voters listed as “Vote-by-Mail” in the combined roster-index who do not have their Vote-by-Mail ballots to surrender
- Fail Safe
 - No record of a voter’s registration can be located by poll workers on the precinct voter registration list



Provisional Voting

Incidence Over 3 Prior General Election Cycles

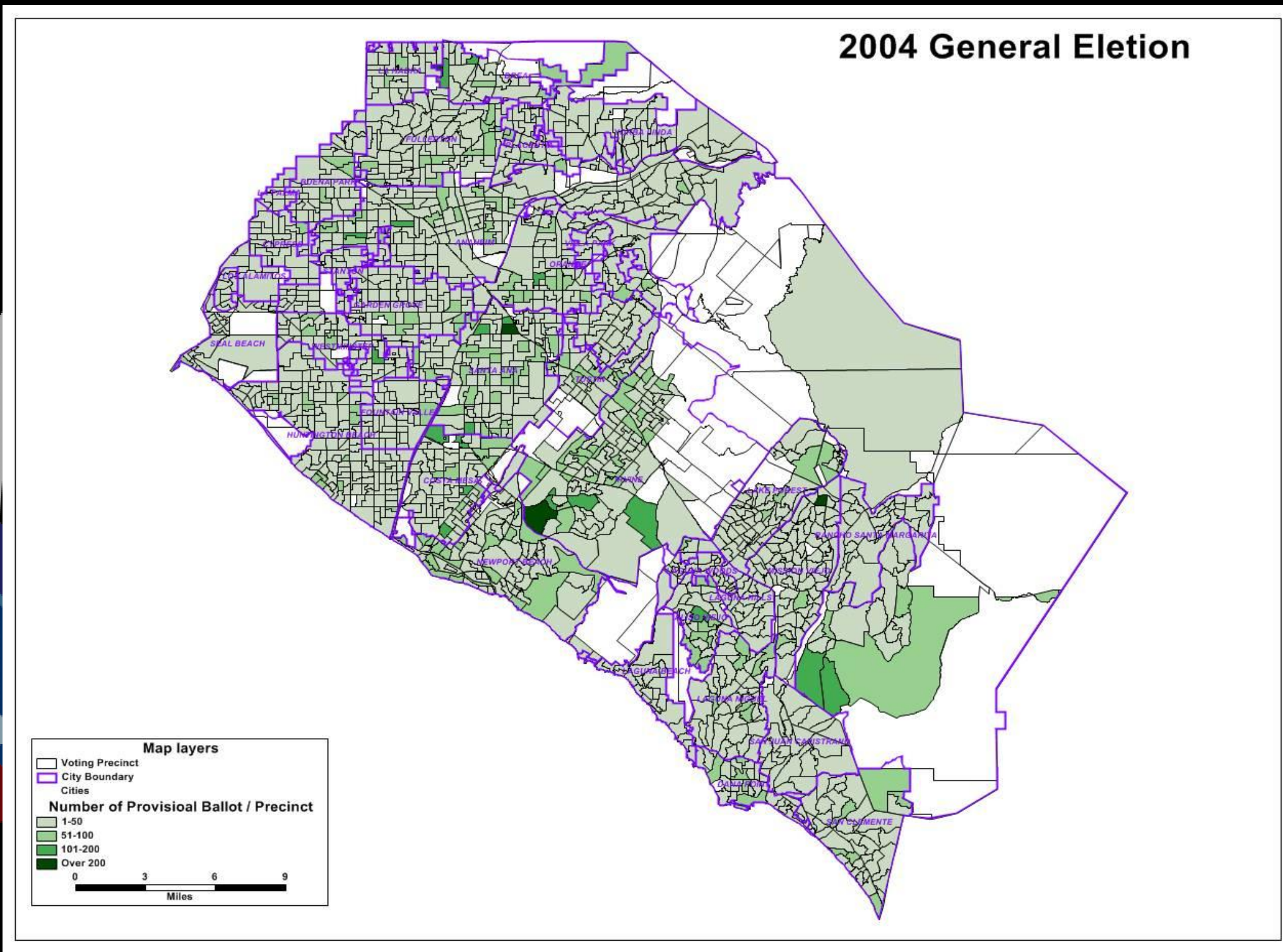


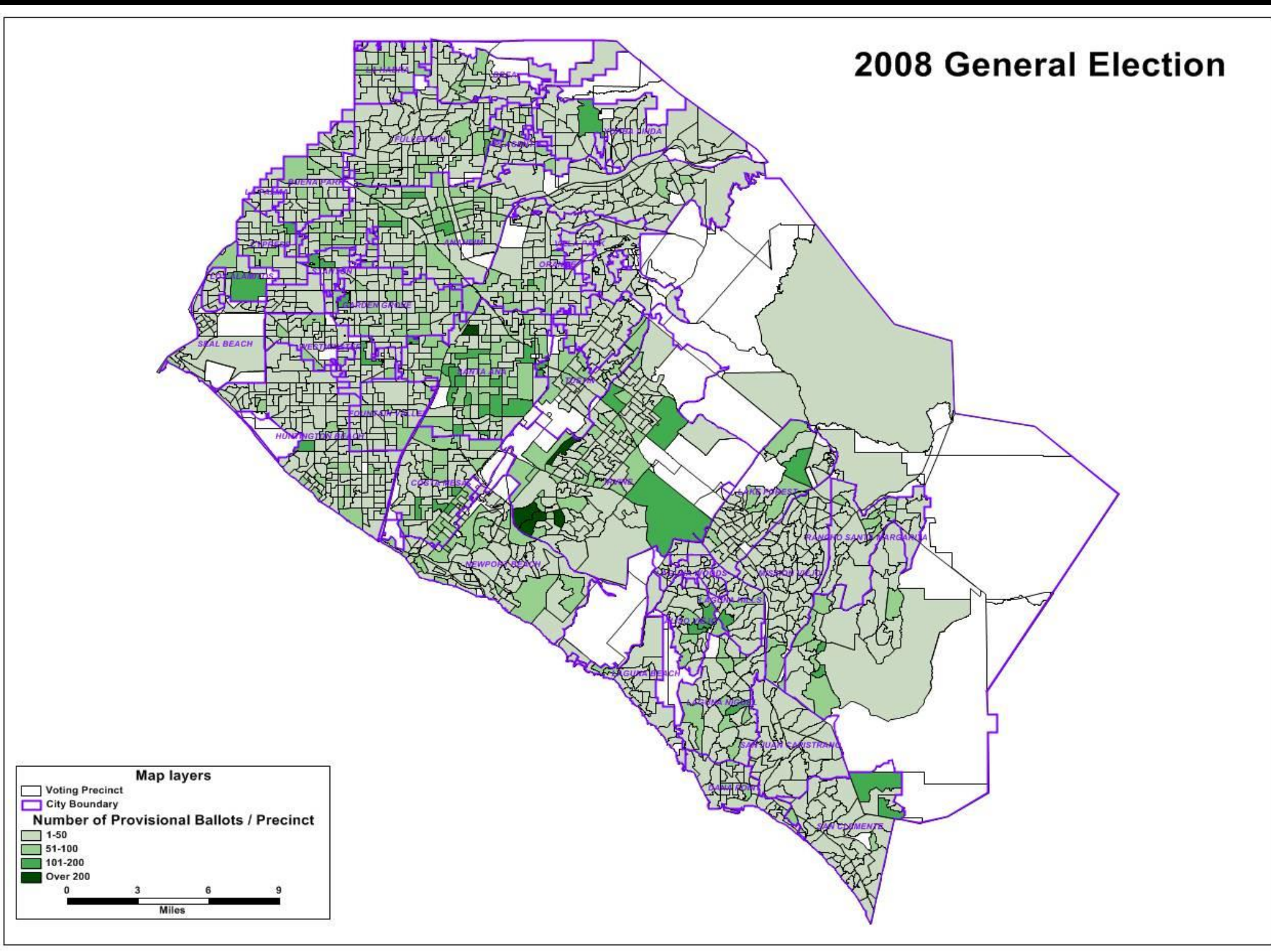
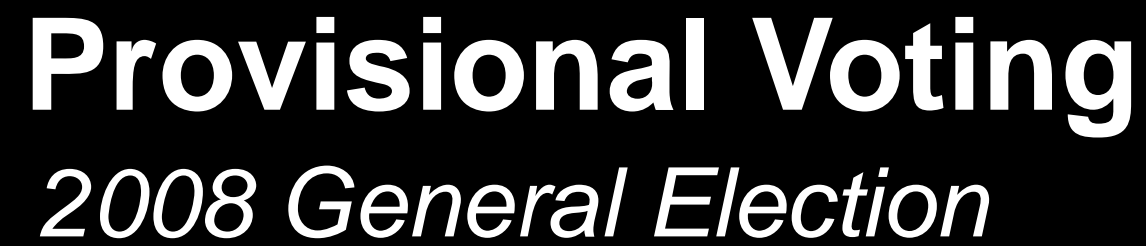
Neal Kelley, Orange County Registrar of Voters, visit us at ocvote.com

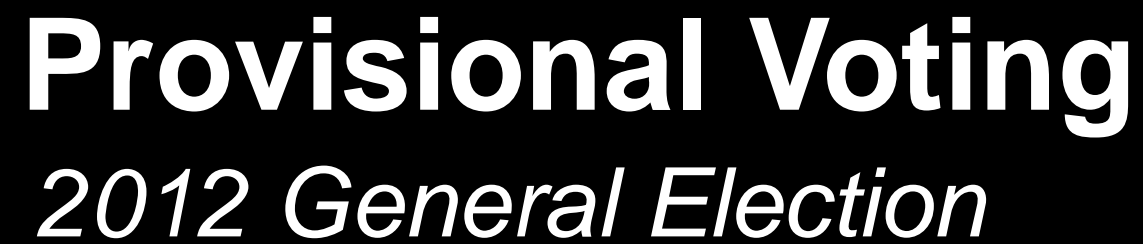


Provisional Voting

Where are provisional votes being cast?



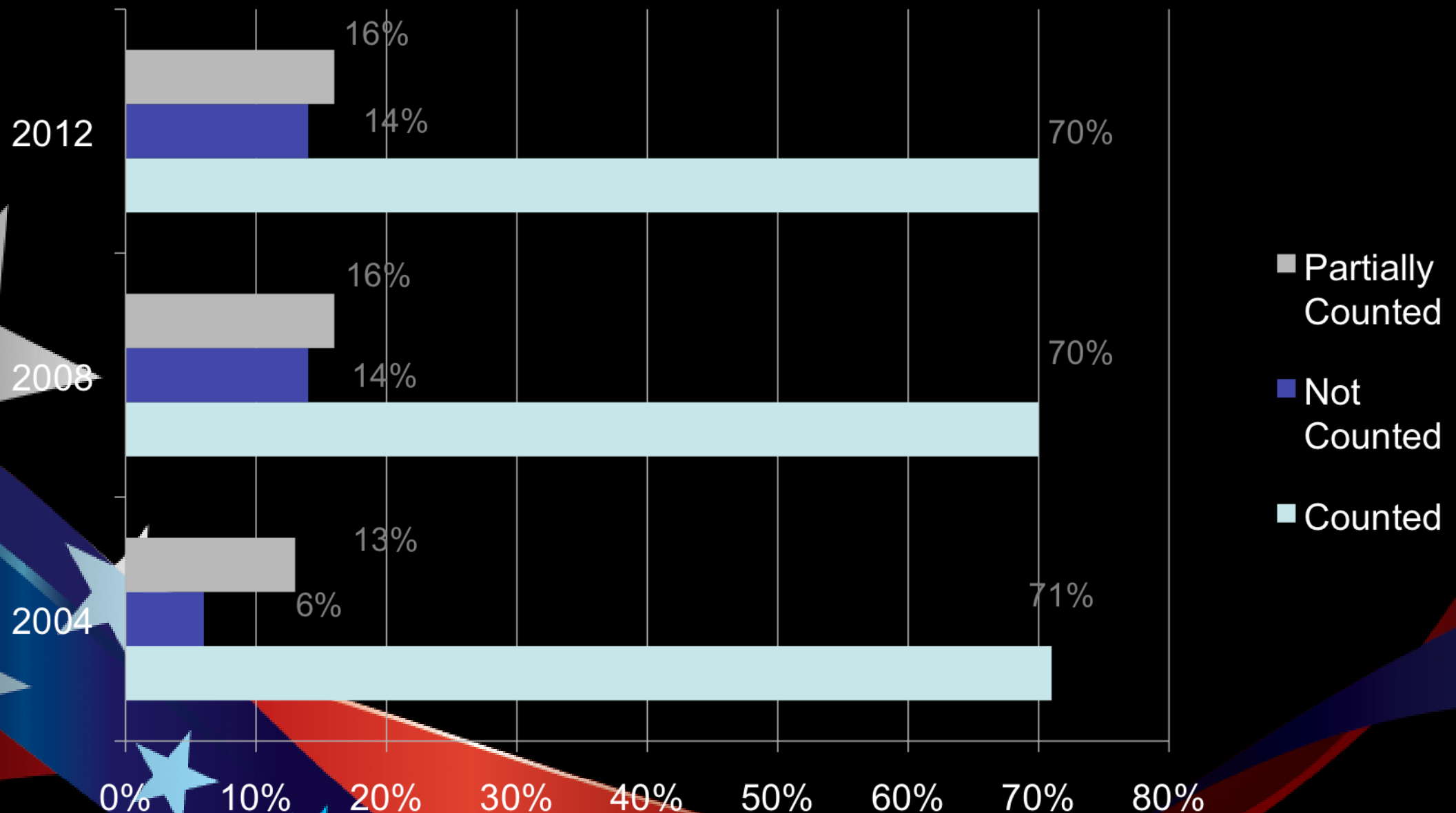






Provisional Voting

What Happens to Cast Provisional Ballots?

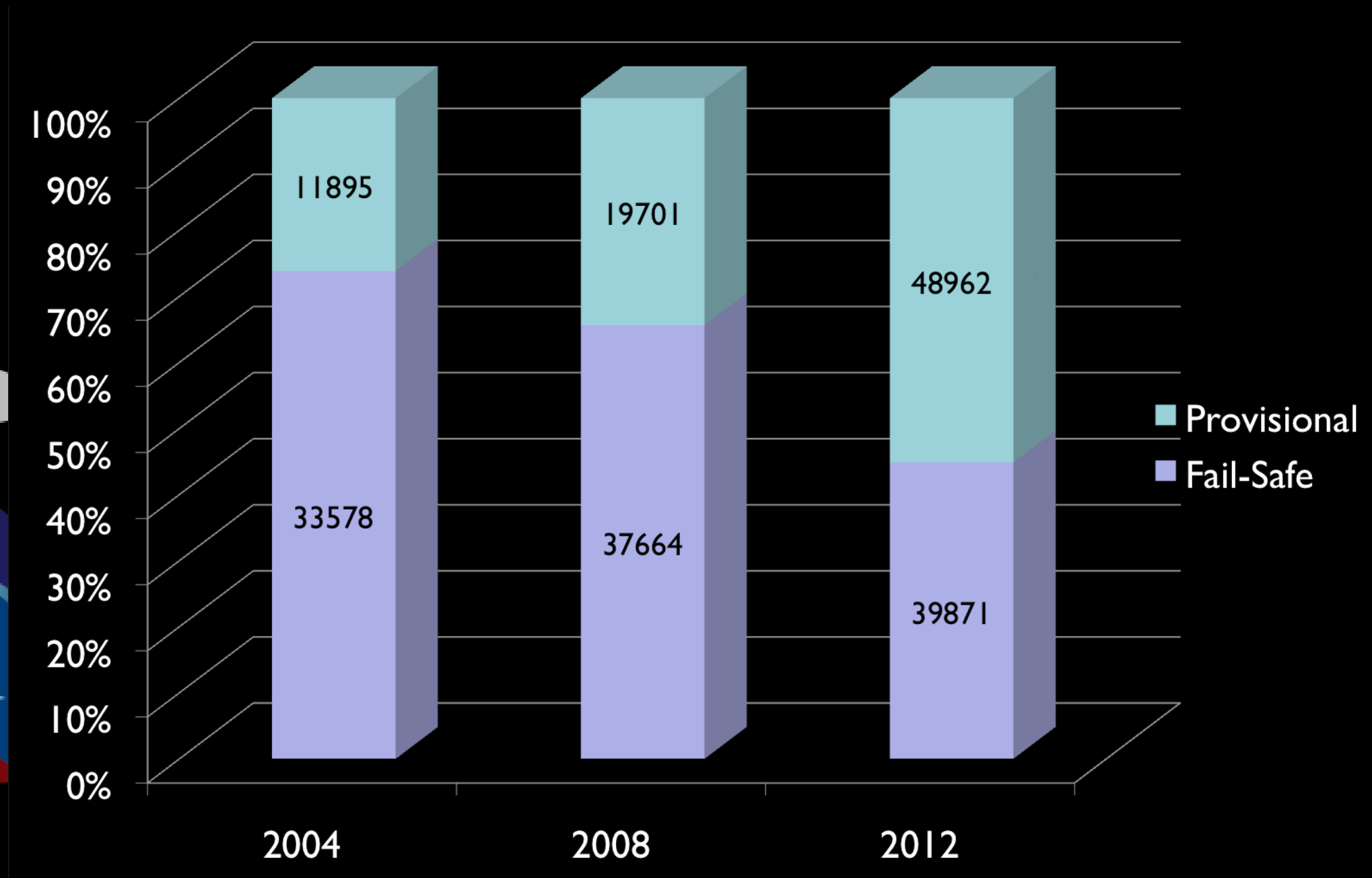


Neal Kelley, Orange County Registrar of Voters, visit us at ocvote.com



Provisional Voting

Provisional vs. Fail-Safe Voters



Neal Kelley, Orange County Registrar of Voters, visit us at ocvote.com



Provisional Voting

- 2004 to 2008:
 - Total provisional ballots cast increased from 45,473 to 57,365 (26% increase)
 - Fail-Safe ballots increased by 12%
 - Provisional ballots increased by 66%
- 2008 to 2012:
 - Total provisional ballots cast increased from 57,365 to 88,833 (55% increase)
 - Fail-Safe ballots increased by 6%
 - Provisional ballots increased by 149%



Provisional Voting

Fail-Safe Voters: Challenges

- Intentional Provisional Voting
 - Voter is aware he/she is not registered or did not register in time to vote
 - Voter knowingly votes at wrong polling place
- Students
 - Colleges have students from all over the country
 - Students may use home address (not school address) for voter registration
 - Students may intentionally vote at wrong polling place (UCI example)



Provisional Voting

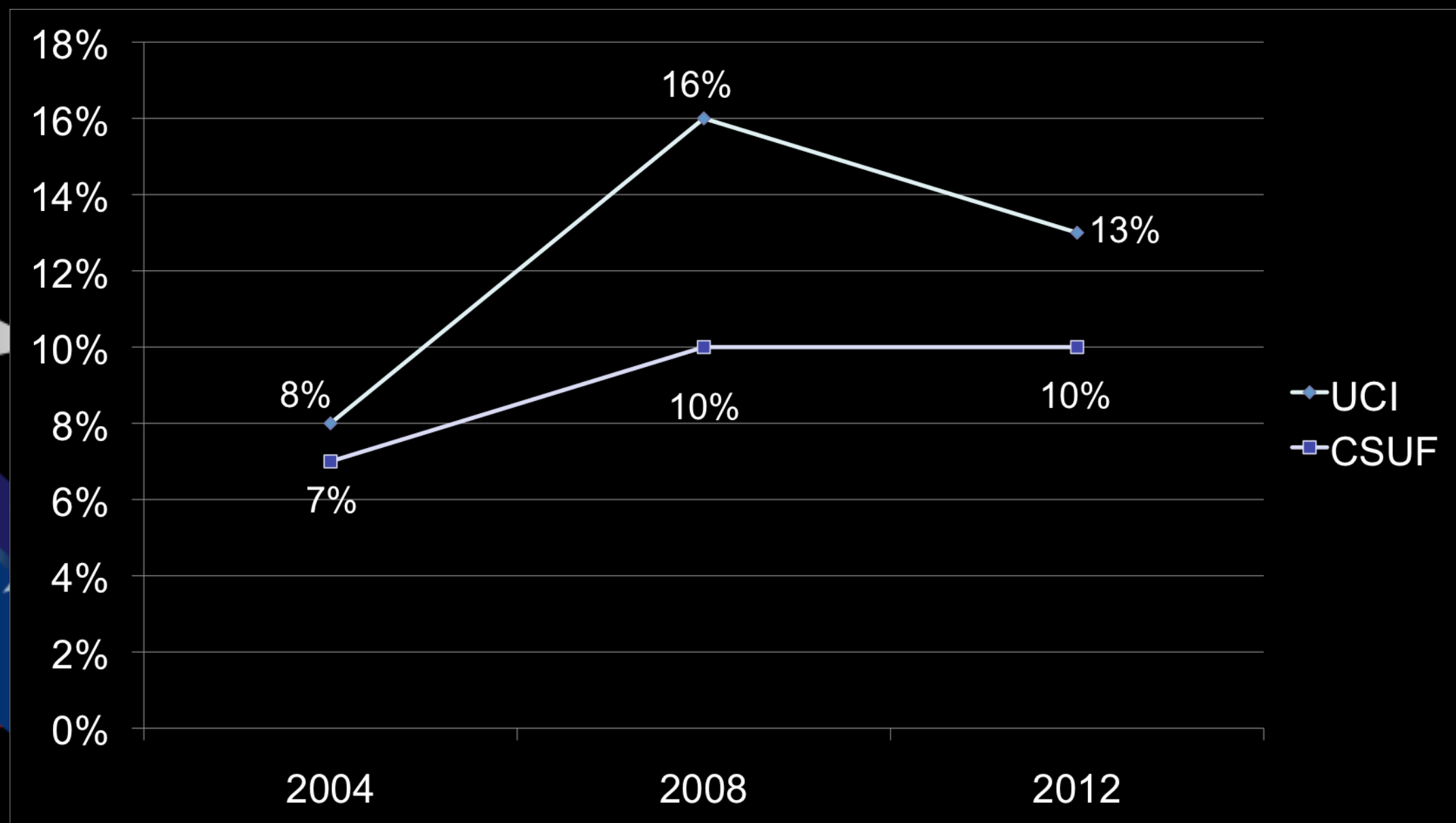
University California, Irvine & Cal State University Fullerton

- UCI in 2012
 - 5 polling places
 - 8 precincts
 - 1,380 provisional voters out of 10,922 registered voters
- CSUF in 2012
 - 1 polling place
 - 2 precincts
 - 129 provisional voters out of 1,274 registered voters



Provisional Voting

UCI & CSUF Provisional Voters in %





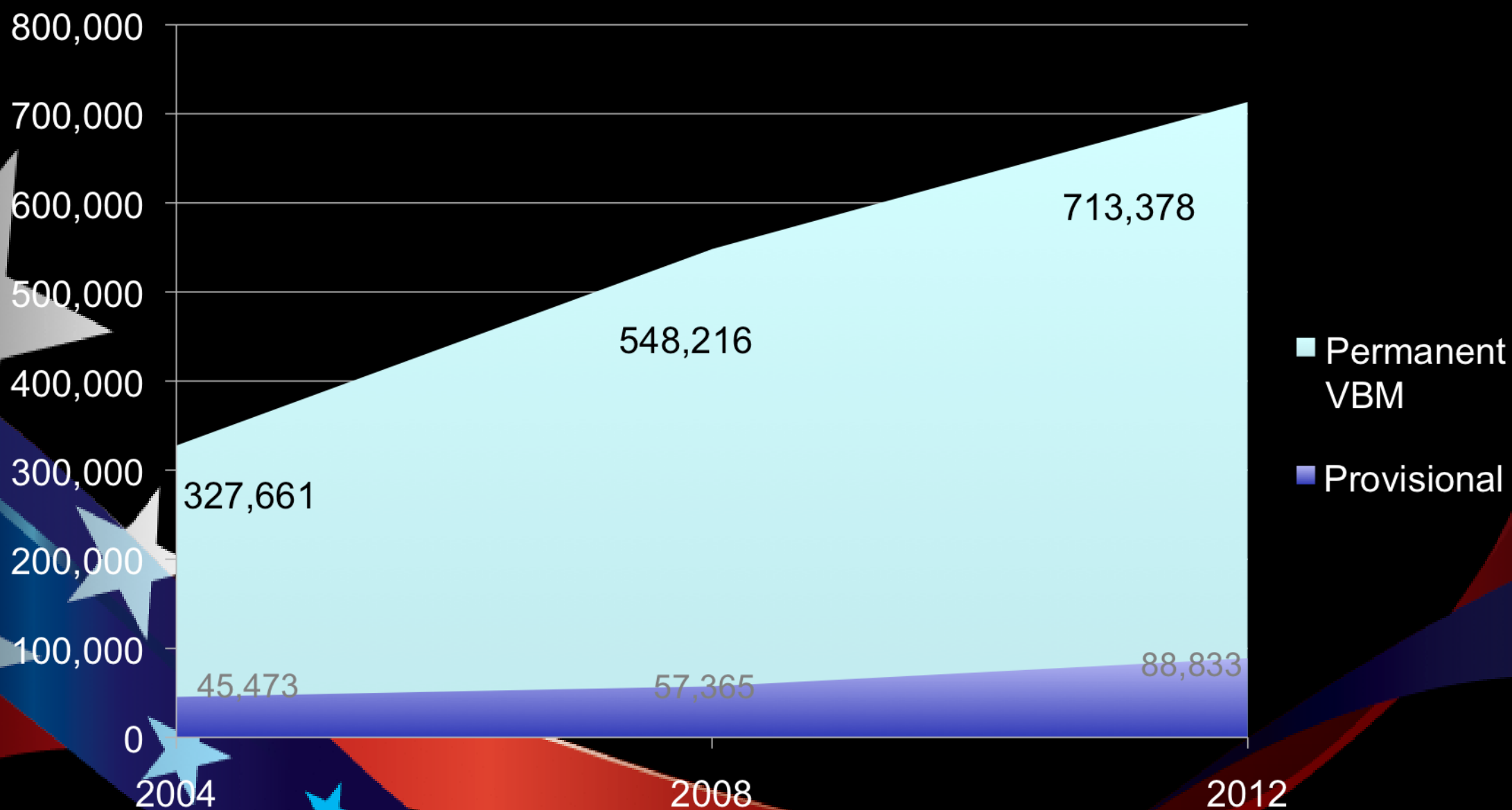
Provisional Voting

- Fail-safe voter rate of increase has steadily declined
 - 74% of all provisional voters in 2004
 - 66% of all provisional voters in 2008
 - 45% of all provisional voters in 2012
- Voters listed as vote-by-mail who voted at a polling place without surrendering a ballot increased
 - 26% of all provisional voters in 2004
 - 34% of all provisional voters in 2008
 - 55% of all provisional voters in 2012



Provisional Voting

Provisional Voters & Permanent Vote-by-Mail Voters



Neal Kelley, Orange County Registrar of Voters, visit us at ocvote.com



Provisional Voting

Online Voter Registration

- Orange County did not see a large increase in provisional voting as a result of online registration
- Efforts to prevent provisional voting include:
 - Timely processing of online registrations
 - Keeping up with pending voter records resulting from online registration



Provisional Voting Best Practices

Additional Efforts to Reduce Provisional Voting

- Proactively contacting voters to resolve issues such as failing to provide a digital signature
- Diligent database maintenance
- Use of credible 3rd party data



Provisional Voting Best Practices

Efforts to Improve the Provisional Voting Process

- Increased training
 - Colleges
 - Poll workers
- Simplified provisional voting process
 - Obtain input from poll workers by conducting focus groups
 - Redesign of the provisional envelope to help voters and poll workers



Provisional Voting Best Practices

Efforts to Improve the Provisional Voting Process

- Should we continue to expand outreach to voters related to provisional voting?
- How will Same Day Registration impact provisional rates?
- Will roster files from VoteCal improve data?



Provisional Voting Best Practices

The Process Prior to 2012

Provisional voter identified by poll worker was provided a blue or white envelope depending on the reason for voting provisionally

- Blue envelope used when voters were listed in roster as vote-by-mail but did not have a ballot to surrender at polling place
- White envelopes used when a voter's name could not be found in the combined roster-index, a voter failed to vote in their correct precinct, and a voter could not provide proof of residence as specified



Provisional Voting Best Practices

The Process Prior to 2012

- Provisional voters were processed differently depending on their situation
 - Ex. A voter using the white envelope also had to complete an attached affidavit.
- Input from poll workers obtained on election day and from post-election surveys revealed the process was confusing, cumbersome, and created bottlenecks and delays for voters.



Provisional Voting Best Practices

Redesigned Provisional Voter Envelope



ORANGE COUNTY PROVISIONAL VOTER ENVELOPE

POLL WORKER: COMPLETE THIS SECTION

① Precinct number: _____ ☐ Voted paper ballot
Party preference: _____ ☐ Voted electronic ballot
(Primary Election only)

② ☐ Voter is not on the Roster at this polling place (or different address than listed in Street Index)
☐ Roster indicates "vote-by-mail" and voter does not have ballot to surrender; or early voter
☐ Roster indicates "Proof of Residence Required" but voter cannot present proof of residence
☐ Voter requested different party ballot (Primary Election only)
☐ Voter provides a different name than Roster indicates

VOTER: COMPLETE THIS SECTION - ITEMS IN RED ARE REQUIRED (PLEASE PRINT)

- Complete a new voter registration form if you are not registered in Orange County, CA; if your name has changed; or if you wish to change your party preference (you can fill out the form at the polling place or return via mail).*
- Read, complete and sign the VOTER'S DECLARATION on this provisional voter envelope.
- After voting electronically insert the "Voter Provisional Stub" in this envelope and give the envelope to the poll worker unsealed; or if voting a paper ballot seal your paper ballot in this envelope and return it to the poll worker.

First Name _____ Middle Initial _____ Last Name _____
Former Last Name, if any _____ Birth Date _____
Current Residence Address (No P.O. Box) _____ City _____ State _____ Zip Code _____
Previous Residence Address, if any _____ City _____ State _____ Zip Code _____
**CA Driver's License or State ID#: _____ **Social Security# (Last 4 digits): _____

VOTER'S DECLARATION:

I declare under penalty of perjury that I am a resident of California, not in prison or on parole for the conviction of a felony, and I have not previously voted in this election. I understand that voting twice constitutes a crime. I have not voted previously in this election either by vote-by-mail ballot or at any other polling place.

**Signature _____ *Registration forms are available from poll workers; **Information is confidential

FOR OFFICE USE ONLY

AFFIDAVIT#:		VERIFIED BY:	
<input type="checkbox"/> Counted Reason: OK	<input type="checkbox"/> Partially counted Reason: EL	<input type="checkbox"/> Not counted Reason:	
<input type="checkbox"/> VBM - not returned	Home precinct: _____	<input type="checkbox"/> VBM - returned date: _____ Status: _____	
<input type="checkbox"/> Moved within County	Party preference: _____	<input type="checkbox"/> Not registered NR	
<input type="checkbox"/> Name change	(Primary Election only)	<input type="checkbox"/> Signature issue SI	
<input type="checkbox"/> Voted in wrong precinct		<input type="checkbox"/> Voted at polls	
<input type="checkbox"/> Other:		<input type="checkbox"/> Business/P.O. Box <input type="checkbox"/> Other	

• California Elections Code §14310 (c)(2) states that provisional ballots are counted only after establishing the voter's right to vote or by order of a superior court, which must be received prior to the completion of the official canvass.
• Código Electoral de California § 14310 (c)(2) afirma que las boletas electorales provisionales se cuentan sólo después de establecer el derecho del votante a votar o por orden de una corte superior, que debe ser recibida antes de la finalización del escrutinio oficial.
• Đạo Luật Bầu Cử California §14310 (c)(2) quy định rằng những lá phiếu tạm thời chỉ được kiểm sau khi xác nhận quyền bầu cử của cử tri hoặc do lệnh của một tòa thượng thẩm mà phải được nhận trước sự hoàn tất cuộc kiểm phiếu.
• 依加州選舉法第14310(c)(2)節陳述,只有在確認選民有權投票之後,或必須在正式審核結束之前收到高等法院命令,臨時選票才能列入計算。
• 캘리포니아 선거법 제 14310 (c)(2)항은 모든 잠정투표자는 유권자의 투표 자격을 확인한 후에 또는, 공식 개표 절차 종료 이전에 접수된, 상급법원의 명령에 의해서만 개표가 가능하도록 규정하고 있습니다.

VOTER RECEIPT

Poll Worker - Please Detach and Give to Voter

VOTER RECEIPT

Check the status of your Provisional Ballot by visiting ocvote.com/provisional or calling 1-888-628-6837
Revise el estado de su Boleta Electoral Provisional al visitar ocvote.com/provisional o llamando al 1-888-628-6837
Xem tình trạng Lá Phiếu Tạm Thời bằng cách thăm ocvote.com/provisional hoặc gọi 1-888-628-6837
如果您查詢您的臨時選票情況,請上網 ocvote.com/provisional 或電洽 1-888-628-6837
귀하의 잠정투표자의 유무효 여부를 확인하려면 ocvote.com/provisional에 접속하거나 1-888-628-6837로 전화하십시오

STEPS FOR POLL WORKERS

- CHECK all sections of the Roster for the voter's name.
- FILL OUT top box on reverse side.
- ASK voter to fill out the VOTER'S DECLARATION on reverse side.
- CHECK that voter has provided information in red lettering.
- ISSUE a paper or electronic ballot.
- INSTRUCT the voter to put his/her voted paper ballot or Voter Provisional Stub in this envelope.
- OFFER the voter a new voter registration form (only if needed).**
- TEAR OFF the above receipt, GIVE to voter.
- PUT envelope in the Ballot Box.

**Voters can fill out registration form at polling place (return in supply box) or return via mail.

Important Provisional Voter Information

You are a provisional voter because of one or more of the following:

- (1) The roster indicates you are a vote-by-mail voter but do not have your ballot to surrender; (2) You are not on the roster at this polling place; (3) The roster indicates "Proof of Residence" is required but you cannot provide it; (4) You requested a different party ballot than indicated on the roster (Primary Election only). California Elections Code §14310 (c)(1) states that the election's official shall examine the records with respect to all provisional ballots cast. The voter's signature on the provisional ballot shall be compared with the voter's signature on the original voter registration and shall be rejected if not signed or if the signatures do not compare. If you need further assistance please ask a poll worker.

Usted es un votante provisional debido a una o más de los siguientes:

- (1) La lista electoral indica que es votante de voto por correo, pero no tiene la boleta para entregarla; (2) Usted no está en la lista electoral en esta casilla de votación; (3) La lista electoral indica "Comprobante de Residencia" es necesario, pero usted no puede proveerlo; (4) Ha solicitado una boleta electoral del partido diferente al indicado en la lista electoral (Elecciones Primarias solamente). Código Electoral de California § 14310 (c)(1) afirma que el oficial de elecciones deberá examinar los registros electorales con respecto a todos los votos emitidos provisionales. La firma del votante en la boleta electoral provisional se comparará con la firma del votante en el registro de votantes originales y será rechazada si no se firma, o si las firmas no se pueden comparar. Si necesita ayuda, por favor avisele a un funcionario de casilla.

Quý vị là cử tri tạm thời vì một hoặc hơn những lý do sau đây:

- (1) Sổ danh bạ chỉ định quý vị là cử tri bầu-bằng-thư nhưng không có lá phiếu để giao nộp; (2) Tên quý vị không có trên sổ danh bạ tại phòng phiếu này; (3) Sổ danh bạ đòi hỏi "Chứng Minh Cư Trú" nhưng quý vị không cung cấp chứng minh cư trú; (4) Quý vị yêu cầu một chính đảng khác là chính đảng chỉ định trong sổ danh bạ (Bầu Cử Sơ Bộ thời). Đạo Luật Bầu Cử California §14310 (c)(1) quy định rằng viên chức bầu cử phải xem xét hồ sơ liên quan đến tất cả những lá phiếu được bầu. Chữ ký cử tri trên lá phiếu tạm thời phải được so sánh với chữ ký cử tri trên hồ sơ cử tri nguyên thủy và sẽ bị bỏ nếu không có chữ ký hoặc nếu hai chữ ký không phù hợp. Nếu quý vị cần thêm sự giúp đỡ xin liên lạc nhân viên phòng phiếu.

您因為下列情況而屬於臨時投票選民:

- (1) 選民名冊顯示您是郵寄投票選民,但是您沒有交出郵寄選票; (2) 您沒有列名在本投票站選民名冊; (3) 選民名冊顯示您必須出示「居住證明」,但是您無法提供此項資料; (4) 您要求的黨派選票與選民名冊顯示不同。
(只適用於初選) • 依加州選舉法第14310(c)(1)節陳述,選舉官員應檢驗所有臨時選票相關記錄。臨時選票上選民簽名應與選民原始登記簽名互相比對,如果沒有簽名

귀하는 다음과 같은 이유로 잠정투표자가 되었습니다:

- (1) 유권자 명부에 귀하가 우편투표자로 되어 있는 데 반납할 귀하의 우편투표지를 가지고 있지 않습니다; (2) 본 투표소의 유권자 명부에 귀하의 이름이 없습니다; (3) 유권자 명부에 귀하의 "거주지 증명"을 요구하고 있는 데 귀하의 거주지를 증명할 서류를 갖고 있지 않습니다; (4) 유권자 명부에 기재된 귀하의 소속 정당 이외의 투표지를 요청하셨습니다 (예비선거에 한함). 캘리포니아 선거법 제 14310 (c)(1) 항은 선거당장 공무원이 기표가 완료된 모든 잠정투표지와 관련된 기록을 확인할 것을 규정하고 있습니다. 잠정투표지에 있는 유권자의 서명과 유권자등록 원본상의 유권자의 서명을 대조하여야 하며 만약 서명이 빠졌거나 유권자등록 원본상의 서명과 다른 경우에는 무효로 간주됩니다. 도움이 필요하시면 선거관리요원에게 도움을 요청하십시오.

Neal Kelley, Orange County Registrar of Voters, visit us at ocvote.com



Provisional Voting Best Practices

Actions Taken to Improve the Process

The revised provisional voting process and envelope was rigorously tested before implementation in the 2012 Primary Election.

- Poll worker surveys, focus groups and detailed time studies
- Mock voting using ROV staff, other county employees, and poll workers
- Feedback solicited from the Community Election Working Group on content and translations



Provisional Voting Best Practices

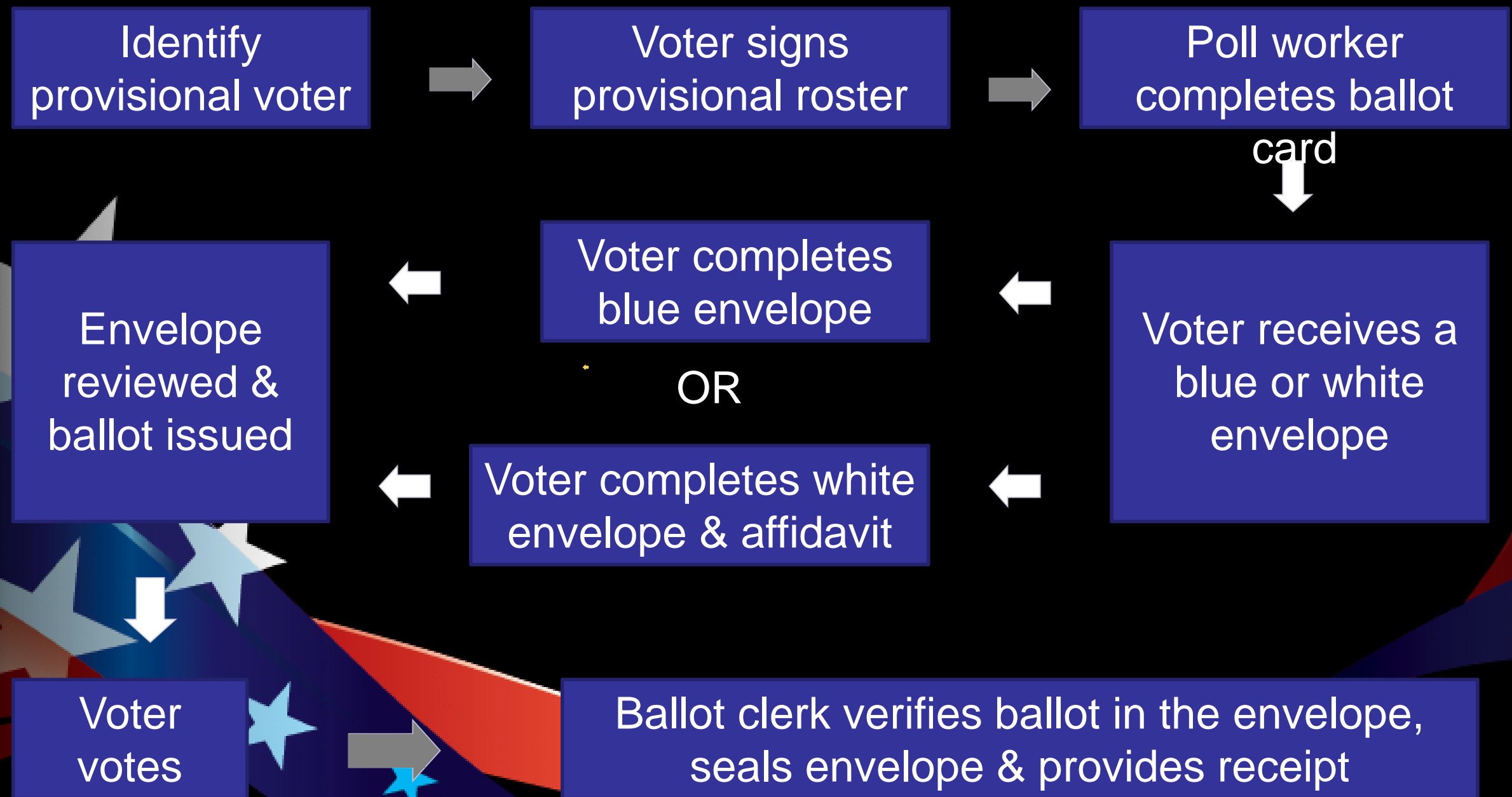
Benefits of Provisional Voter Envelope Redesign

- Poll workers no longer need to identify the type of provisional voter OR maintain a provisional voter roster
- Envelope sections to be completed by poll workers and voters are clearly identified
- Precinct and party is written on the envelope eliminating the need for a ballot card



Provisional Voting Best Practices

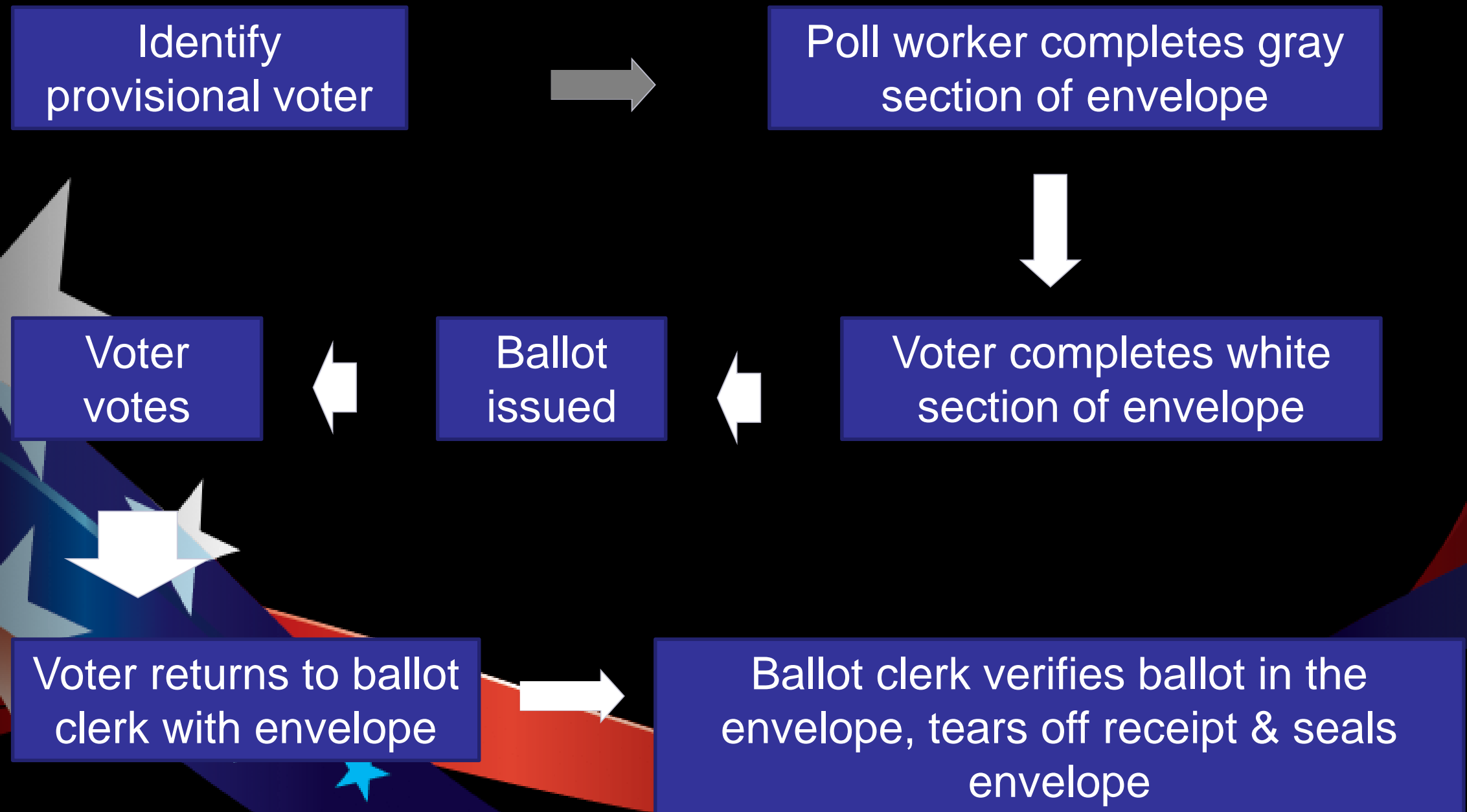
Process Pre-2012





Provisional Voting Best Practices

Process Post-2012





Provisional Voting Best Practices

The Results?

- Poll worker response was highest rated improvement
- Three time consuming steps removed from the provisional voting process speeding up general processing as well
- Time saved per voter approximately 4 to 8 minutes (depending on whether voter needed to complete a separate affidavit)



Provisional Voting

Thank You

Neal Kelley, Orange County Registrar of Voters, visit us at ocvote.com