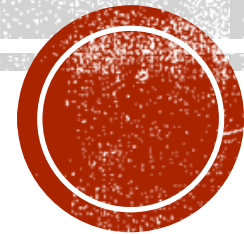


# Board of Elections

HAMILTON COUNTY OHIO

Sherry Poland, Director

Alex Linser, Deputy Director



# WHO ARE WE?

- Board of Elections – 4 Board Members, 2 of each party
- Secretary of State – Chief Elections Official
- Director and Deputy Director of opposite parties
- 5 Departments
  - Administration & IT
  - Registration
  - Absentee Voting / Poll Workers
  - Operations
  - Locations and Supplies



# ADMINISTRATION / IT

- Campaign Finance
- Candidate Filings
- IT Support
- Communications

## OHIO CAMPAIGN FINANCE

### REPORTING CALENDAR

# 2022

See [Ohio Revised Code §3517.10](#) for complete details of the timing and requirements for most campaign finance reporting.

2021 Annual <sup>1</sup>	Jan. 31, 2022 to disclose activity through Dec. 31, 2021.
Pre-Primary	April 21, 2022 to disclose activity through April 13, 2022.
Post-Primary	June 10, 2022 to disclose activity through June 3, 2022.
Semiannual <sup>2</sup>	July 29, 2022 to disclose activity through June 30, 2022.
Pre-General	Oct. 27, 2022 to disclose activity through Oct. 19, 2022.
Post-General	Dec. 16, 2022 to disclose activity through Dec. 9, 2022.
2022 Annual	Jan. 31, 2023 to disclose activity through Dec. 31, 2022.

This is based on the following **2022** election dates:

2022 Primary - May 3, 2022

2022 General - November 8, 2022

Activity related to special elections may require reporting on different dates. Filing entities submitting reports to a county board of elections should contact the board for special election dates and filing deadlines not included on this calendar.



Instagram

facebook



# REGISTRATION

- Receive, update, and keep registry of all voter registrations and updates

**Voter Registration and Information Update Form**  
Please read instructions carefully. Please type or print clearly with blue or black ink.  
For further information, you may consult the Secretary of State's website at: [www.OhioSecretaryofState.gov](http://www.OhioSecretaryofState.gov) or call (877) 767-6446.

**Eligibility**  
You are qualified to register to vote in Ohio if you meet all the following requirements:

1. You are a citizen of the United States.
2. You will be at least 18 years old on or before the day of the general election.
3. You will be a resident of Ohio for at least 30 days immediately before the election in which you want to vote.
4. You are not incarcerated (in jail or in prison) for a felony conviction.
5. You have not been declared incompetent for voting purposes by a probate court.
6. You have not been permanently disenfranchised for violations of election laws.

Use this form to register to vote or to update your current Ohio registration if you have changed your address or name.

**NOTICE:** This form must be received or postmarked by the 30th day before an election at which you intend to vote. You will be notified by your county board of elections of the location where you vote. If you do not receive a notice following timely submission of this form, please contact your county board of elections.

**Numbers 1 and 2 below are required by law.** You must answer both of the questions for your registration to be processed.

**Registering in Person**

**Registering by Mail**  
If you register by mail and do not provide either an Ohio driver's license number or the last four digits of your Social Security number, you must enclose with your application a copy of one of the following forms of identification:  
Current and valid photo identification, a military identification, or a current (within the last 12 months) utility bill, bank statement, government check, paycheck, or government document (other than a notice of voter registration mailed by a board of elections) that shows the voter's name and current address.

**Residency Requirements**  
Your voting residence is the location that you consider to be a permanent, not a temporary, residence. Your voting residence is the place in which your habitation is fixed and to which, whenever you are absent, you intend to return. If you do not have a fixed place of habitation, but you are a consistent or regular inhabitant of a shelter or other location to which you intend to return, you may use that shelter or other location as your residence for purposes of registering to vote. If you have questions about your specific residency circumstances, you may contact your local board of elections for further information.

**Your Signature**  
In the area below the arrow in Box 14, please write your cursive, hand-written signature or make your legal mark, taking care that it



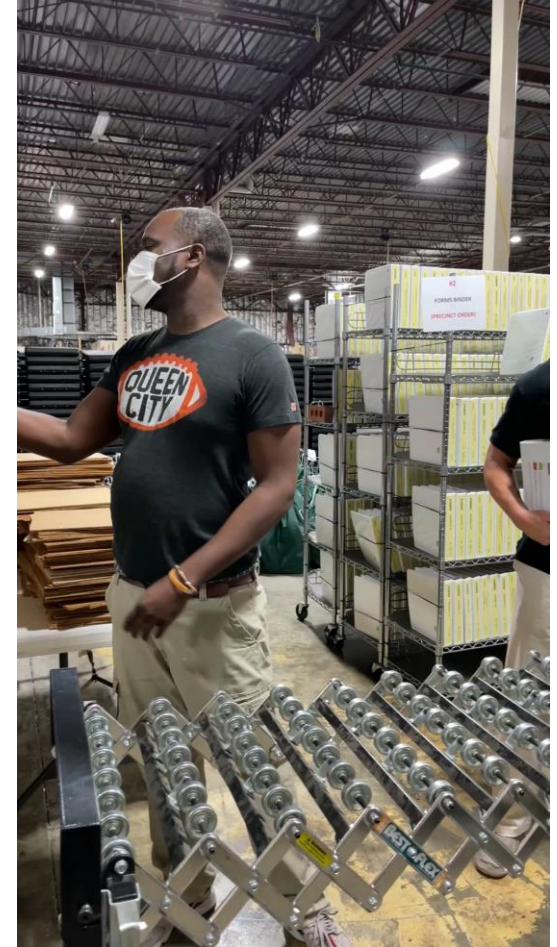
# ABSENTEE / POLL WORKERS

- Sending out absentee ballots
- Preparing for voting
  - Early voting in person
  - Absentee voting
- Recruiting over 2000 poll workers



# LOCATIONS AND SUPPLIES

- Compliance with the Americans with Disabilities Act (ADA)
- Manage polling location contracts
- Pack and deliver supplies for each voting location



Packing Supplies for  
Polling Locations



# OPERATIONS

- Building of the ballot
- Proofing ballots
- Testing voting machines
- Processing Absentee returns
- Counting Votes

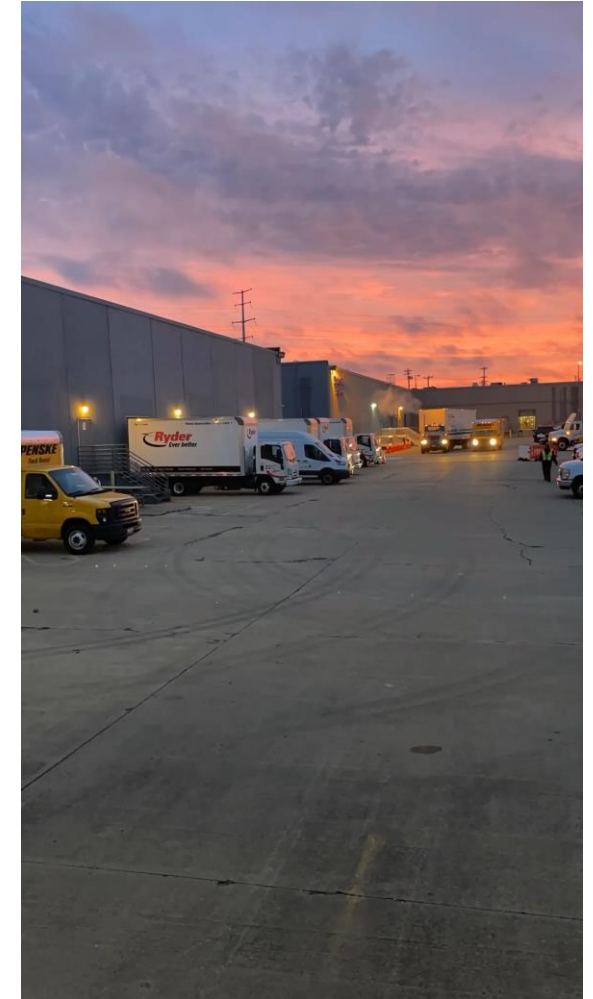
Did You Know:  
Logic and  
Accuracy  
Testing

L&A Testing Video



# ELECTION DAY

- Logistical support to 300+ polling locations
- Call center to poll worker assistance
- Manage troubleshooters in the field
- Receive election equipment after the polls close
- Count and publish votes



Video of loading trucks with election day equipment





# POST-ELECTION

- Supply retrieval
- Certifying official election results
- Recounts
- Audits



Video on Post-Election Audits



**QUESTIONS?**

