

ELECTION

EDUCATION

Series

BRUNSWICK COUNTY

BOARD OF ELECTIONS

INTRODUCTION TO ELECTIONS

WELCOME!

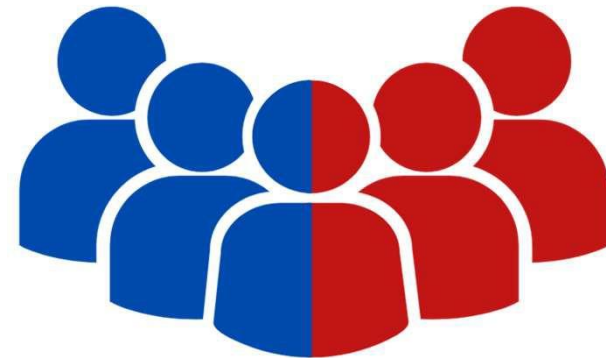
Today's seminar topic will cover:

- State and County Board of Elections
- Brunswick County Board of Elections Staff
- Political Parties in North Carolina
- Types of Elections
- Brunswick County Municipalities and Districts
- Voter Eligibility
- How to Access Voter Information
- Ways to Vote in Brunswick County
- Upcoming Events

STATE BOARD OF ELECTIONS

We are governed by the State Board of Elections

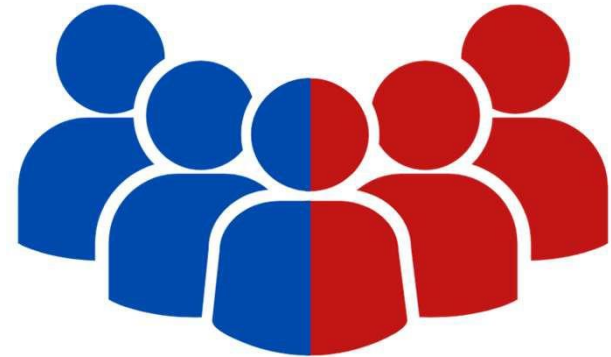
- 5-member bi-partisan board
- Appointed by the Governor
 - Recommendations from parties
 - 4 nominees
 - 4 year term
- Majority is the same party as Governor



COUNTY BOARD OF ELECTIONS

100 counties in North Carolina

- 5-member bi-partisan board
- Appointed by the State Board of Elections
 - Recommendations from parties
 - Nominate up to 3 registered voters
 - 2 members of each party chosen
- Chair is appointed by the Governor
 - Majority is the same party as Governor



COUNTY BOARD OF ELECTIONS

Our county board is appointed to two-year terms in odd-numbered years

Current Board:

- Boyd Williamson (DEM) - Chair
- Stuart Smith (REP) - Secretary
- Paula Clarity (DEM) – Member
- Edward E. Lewis (DEM) – Member
- Randy Pelton (REP) - Member



July 2021 Swearing in of County Board

BRUNSWICK COUNTY STAFF

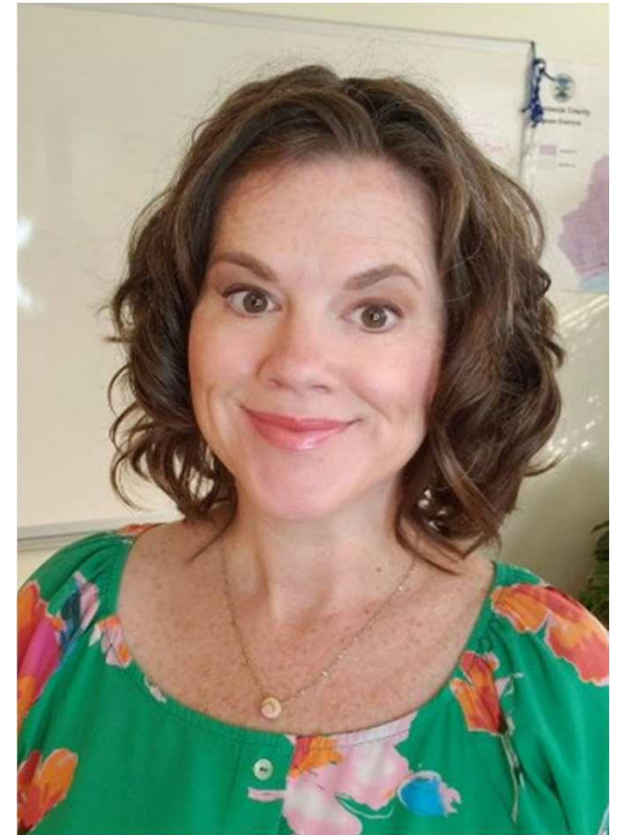
Each county has an Elections Director and various staff

- Elections Director is appointed by the Executive Director of the State Board of Elections
 - Based on nomination from County Board of Elections
- Staff size is determined by individual county needs
 - Brunswick County has 6 Full-time staff
 - Various part-time and temporary staff members

BRUNSWICK COUNTY STAFF

Sara Lavere, Elections Director

- 17 years with Brunswick County Board of Elections
 - Administers elections in Brunswick County
 - Oversees staff and operations
 - Public information officer
 - Keeps county board informed
 - Ensures compliance with state laws and legislation



BRUNSWICK COUNTY STAFF

Melissa Monroe, Deputy Director

- 9 years with Brunswick County Board of Elections
 - In-person voting specialist
 - Ensures polling locations follow procedures
 - Resource for general public
 - Handles inquiries when Executive Director is unavailable
 - Oversees Poll Worker training program



BRUNSWICK COUNTY STAFF

Adrienne Rushton, Assistant Deputy Director

- 8 years with Brunswick County Board of Elections
 - Absentee by mail specialist
 - Candidate filing
 - Campaign finance
 - County level committees
 - Oversees MAT program



BRUNSWICK COUNTY STAFF

Butch Johnson, Elections Computer Technician

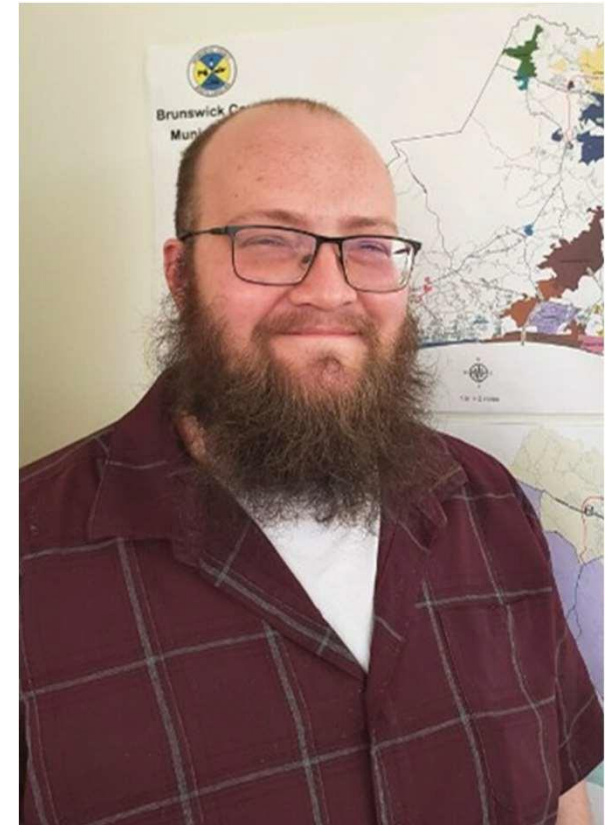
- 7 years with Brunswick County Board of Elections
 - Oversees all voting systems
 - Tabulator, ADA machines, ballots
 - Logic and Accuracy testing
 - Manages poll books
 - Geo-coding



BRUNSWICK COUNTY STAFF

Ryan Childress, Election Logistics Specialist

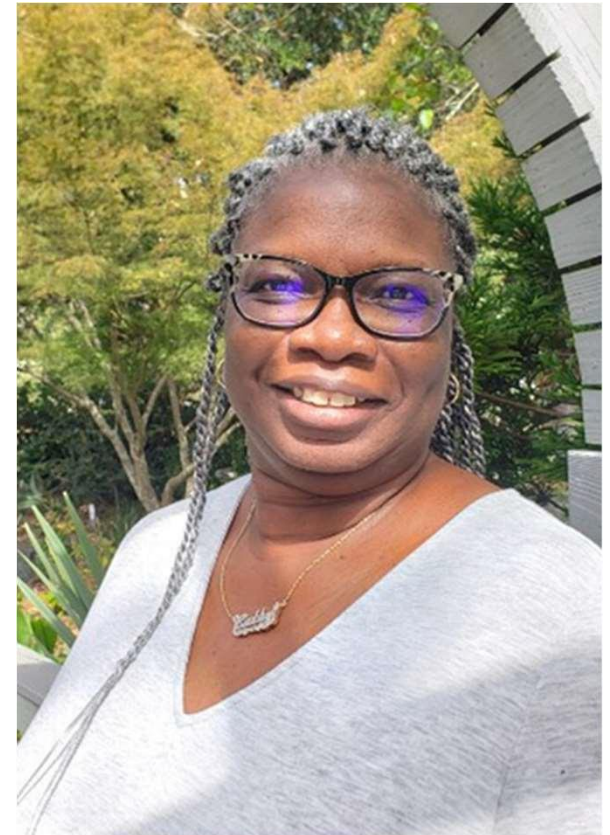
- 3 years with Brunswick County Board of Elections
 - Manages warehouse and retention of election supplies
 - Polling locations
 - Space, parking, curbside, buffer zones
 - Distribution of precinct supplies
 - Oversees A/V



BRUNSWICK COUNTY STAFF

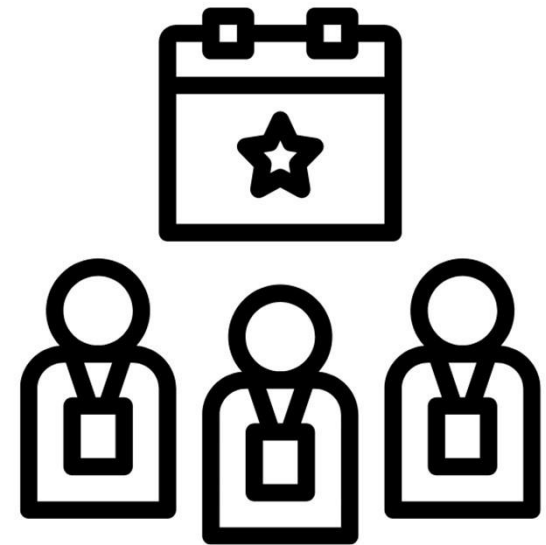
Cathy Newland, Registration Clerk

- 2 years with Brunswick County Board of Elections
 - First point of contact
 - Oversees voter rolls
 - Manages all aspects of voter registration
 - List maintenance
 - Removing deceased and relocated voters



Part-time and Temporary Staff Members

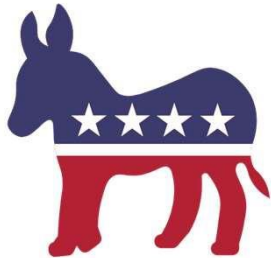
- Regular part-time staff
 - Absentee by mail specialists
 - Poll worker training
 - Outreach
- Seasonal temporary staff
 - Office coverage
 - Poll Workers



NC POLITICAL PARTIES

There are four political parties recognized in North Carolina:

DEMOCRATIC



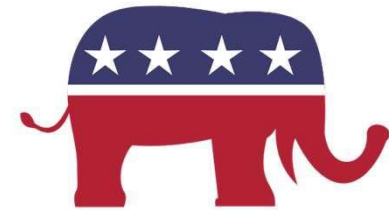
GREEN



LIBERTARIAN



REPUBLICAN



- Voters are not required to choose a party affiliation
 - In NC: Unaffiliated
- Political affiliation determines ballot received in a Primary only
 - In General elections, voters can vote for any candidate regardless of party
 - In Brunswick County, Municipals are non-partisan

TYPES OF ELECTIONS

There are two main types of elections: Statewide and Municipal

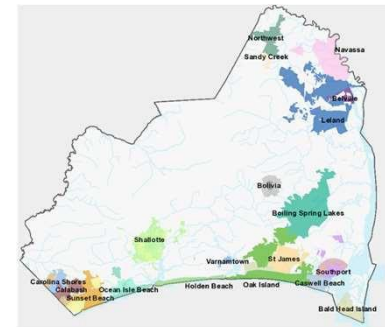
Statewide Elections

- Occur in even numbered years, every two years
- Include a Primary and General election
- National, state and county offices



Municipal Elections

- Occur every two years
 - Brunswick County – odd years
- To elect governing officials of cities, towns, villages and special jurisdictions



PRIMARY ELECTION

A Primary Election is an election to select the candidates from each party that will run for public office – no one is elected to office in a Primary election

- In NC, the Primary Election occurs on the Tuesday following the first Monday in March
- Process by which voters indicate their preference for their party's candidate
- North Carolina: Partially Closed Primary State
 - Voters affiliated with a party are required to vote party of record ballot
 - Unaffiliated voters can choose which party ballot to vote on (Dem, Lib or Rep)
 - Green party has not opened its primaries to unaffiliated voters
- All registered voters are eligible to vote if their party has a primary
 - Provided voters meet state residency and registration requirements

GENERAL ELECTION

A General Election is held to select candidates for various federal, state and county offices

- Election occurs on the Tuesday following the first Monday in November
- Voters are selecting candidates for the offices that are up for election on the ballot
 - Voters will see *all* eligible candidates
 - Voters may vote for any candidate on the ballot
- All registered voters are eligible to vote
 - Provided voters meet state residency and registration requirements

MUNICIPAL ELECTION

Municipal Elections are held to elect governing officials of cities, towns, villages and special jurisdictions

- In Brunswick County, Election occurs on the Tuesday following the first Monday in November
 - This year is a Municipal year. Election Date: Tuesday, November 7th
- Only residents of the municipality may vote in the election
 - Must have lived in the municipality for at least 30 days prior to the election
- Voters in unincorporated areas are not eligible to vote
 - Part of a jurisdiction that has a ballot item
 - Use voter look up to see jurisdiction and sample ballots
- Brunswick County Municipals are non-partisan

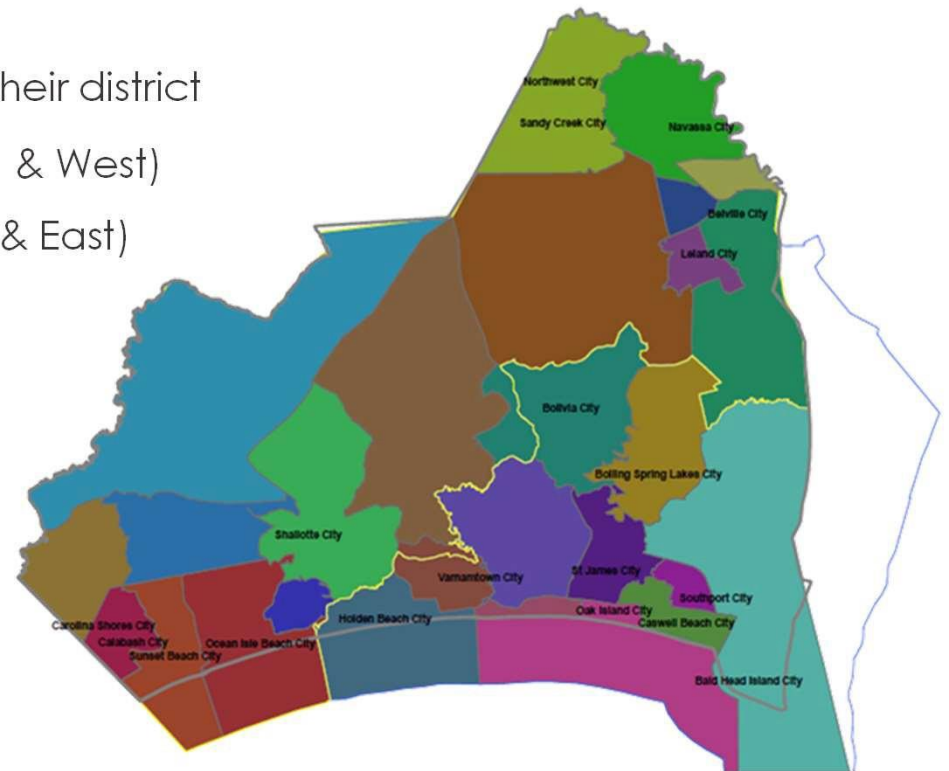
On a county level, we conduct elections for 19 municipalities, 2 sanitary districts, and a hospital district

- Municipalities
 - Bald Head Island, Belville, BSL, Bolivia, Calabash, Carolina Shores, Caswell Beach, Holden Beach, Leland, Navassa, Northwest, Oak Island, OIB, Sandy Creek, Shallotte, Southport, St. James, Sunset Beach and Varnamtown
- Sanitary districts
 - H2Go Brunswick Regional Water and Sewer, Southeast Brunswick Sanitary District
- Hospital district
 - Doshier Hospital Board of Trustees
- We have 27 precincts in our county
 - Assigned polling locations – not all precincts are open in Municipal elections

BRUNSWICK COUNTY DISTRICTS

On a state level, Brunswick County has 2 districts, 17th and 19th that elect our North Carolina House of Representatives

- Voters can only vote for the representative in their district
 - 17th district is above the yellow line (North & West)
 - 19th district is below the yellow line (South & East)
- Two precincts split between the districts
 - Bolivia
 - Secession 1



VOTER ELIGIBILITY

To vote in North Carolina, you must be a US citizen, turn 18 on or before Election Day and meet residency and registration requirements

- Brunswick County
 - Reside at least 30 days prior to the election
 - Can only register in one place
 - Registration deadline of 25 days prior to the election
 - Voters who miss this deadline can do Same Day Registration during Early Voting
 - Youth options for Pre-registration
 - As young as 16 years old
 - Receive a confirmation of pre-registration letter
 - Receive a registration card once eligible to vote
 - 17-year-olds can vote in a Primary if they will be 18 by General Election day

ACCESSING VOTER INFORMATION

Both the NC State Board of Elections and your Brunswick County Board of Elections provide detailed websites with voter specific information

- State: <https://www.ncsbe.gov/>
- County: <https://brunswickncvotes.gov/>
- New Voters
 - Can register through the DMV: on-site or online
 - Can download, print and mail in an application
 - Can come in person to county BOE
 - Social Service Agencies: DSS, Veterans and Disability Services

Voter Registration Application

NC Voter Registration Application

Please enter your North Carolina Driver License or DMV-issued ID Card number, Social Security number (SSN), and date of birth.

If you do not have a valid North Carolina Driver License or DMV-issued ID Card, you can download a voter registration application and submit it to the State Board of Elections.

Download Voter Registration Application

Record Look-Up

North Carolina Driver License or DMV-issued ID Card Number

Social Security Number

Date of Birth

8 2 2023

Submit Cancel

NORTH CAROLINA VOTER REGISTRATION APPLICATION (Print or fill and mail required)

1. Indicate whether you are qualified to vote or prerogative to vote based on U.S. citizenship and age.

2. Provide your full legal name.

3. Provide your date of birth and identification information.

4. Provide your address information.

5. Provide a mailing address.

6. Provide your demographic information (optional).

7. Provide your choice for political party affiliation.

8. Provide your contact information (optional).

9. Sign below to attest to your qualifications to vote.

10. Sign below to attest to your qualifications to vote.

Registered voters have options to make updates, locate polling location, check jurisdiction and find sample ballots

- Check registration: <https://vt.ncsbe.gov/RegLkup/>
 - Provides residential address
 - Shows jurisdictions
 - Polling location
 - Sample ballot
 - Voter history
- Address, party or name changes
 - On voter registration card
 - Application by mail or in-person
 - Online through DMV: address and party only

Search Criteria
^

Search for voter details, including jurisdictions, polling place, sample ballot *when available*, absentee ballot information, and voter history.

* required fields

* First Name

Middle Initial

* Last Name

Year of Birth

County

* Voter Status

Registered
 Removed or Denied

WAYS TO VOTE

Registered voters have three options to cast their vote in Brunswick County

Absentee by mail



One-stop early voting



In-person on Election Day



- Voters with disabilities or those who need/want assistance
 - Curbside voting
 - Verity Touch
 - MAT – Multipartisan Assistance Team
 - Voter assistance

UPCOMING EVENTS

We will be hosting several other educational seminars in the future as well as our first Election Expo!

Upcoming Election Education Seminars:

Wed 4/26 Voter Registration

Thur 6/15 Accessible Voting

Wed 7/12 Absentee by Mail Voting

Wed 8/16 Voting Equipment

Thur 9/21 Prepare to Vote

Thur 12/7 Certifying an Election

1st Annual ELECTION EXPO: Thursday, May 18th
Open House from 1 – 3pm and 5:30 – 7:30pm



UPCOMING EVENTS

Poll Workers are essential to ensuring the success of elections

Poll Worker Orientations:

Wed, April 19th 10 AM

Thu, May 25th 2 PM

Wed, June 28th 10 AM

Wed, July 26th 2 PM

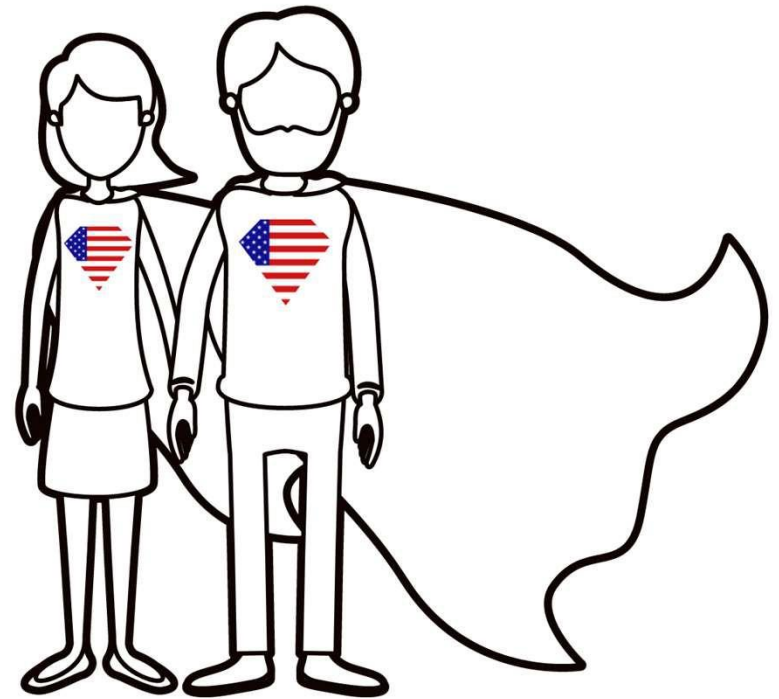
Thu, August 24th 10AM

Orientations are in-person:

Commissioners' Chambers

David Sandifer Administration Building

30 Government Center Drive, Bolivia



QUESTIONS?

Thank you for joining us!

Brunswick County Board of Elections

Mail: PO Box 2, Bolivia, NC 28422

Office: 75 Stamp Act Drive NE, Building H

Phone: 910-253-2620

Fax: 910-253-2618

Website: BrunswickNCVotes.com

Follow us on social media!



brunswickncvotes



brunswickncvotes



BrunscoboE



@brunswickncvotes



<http://bit.ly/3lflmNd>



@brunswickncvotes