

PRO V&V



6705 Odyssey Drive
Suite C
Huntsville, AL 35806
Phone (256)713-1111
Fax (256)713-1112

Test Plan for EAC 2005 VVSG Certification Testing
Dominion Voting Systems Democracy Suite (D-Suite) Version 5.17
Voting System

EAC Project Number: DVS-DemSuite5.17

Version: 01

Date: 12/02/2022

U.S. Election Assistance Commission

VSTL

EAC Lab Code 1501

NVLAP[®]

TESTING
NVLAP LAB CODE 200978-0

Disclaimer: The test report and test results resulting from this test plan must not be used by the client to claim product certification, approval, or endorsement by NVLAP, NIST, or any agency of the U.S. Government.

TP-01-01-DVS-50-01.01

SIGNATURES

Approved by: Michael L Walker 12/02/2022
Michael Walker, VSTL Project Manager Date

Approved by: Wendy Owens 12/02/2022
Wendy Owens, VSTL Program Manager Date

Approved by: Stacey Glover 12/02/2022
Stacey Glover, QA Manager Date

Pro V&V attests to the following: 1) all testing prescribed by the approved and published test plan or amended test plan will be performed as identified or the divergence from the test plan will be properly documented in the resulting test report, 2) all identified voting system anomalies or failures will be reported and resolved, and 3) the resulting test report will be accurate and complete. There will be no opinions or interpretations included in the resulting report, except as noted under 'Recommendations'.

REVISIONS

Revision	Description	Date
00	Initial Release	10/28/2022
01	Updates per EAC comments	12/02/2022

TABLE OF CONTENTS

1.0	INTRODUCTION.....	1
1.1	Description and Overview of EAC System Being Modified.....	1
1.1.1	Baseline Certified System.....	1
1.1.2	Description of Modification.....	22
1.1.3	Initial Assessment.....	24
1.1.4	Regression Test.....	25
1.2	References.....	25
1.3	Terms and Abbreviations.....	26
1.4	Project Schedule.....	27
1.5	Scope of Testing.....	27
1.5.1	Block Diagram.....	29
1.5.2	System Limits.....	29
1.5.3	Supported Languages.....	30
1.5.4	Supported Functionality.....	31
1.5.5	VVSG.....	32
1.5.6	RFIs.....	32
1.5.7	NOCs.....	32
2.0	PRE-CERTIFICATION TESTING AND ISSUES.....	32
2.1	Evaluation of Prior VSTL Testing.....	32
2.2	Evaluation of Prior Non-VSTL Testing.....	20
2.3	Known Field Issues.....	32
3.0	MATERIALS REQUIRED FOR TESTING.....	32
3.1	Software.....	33
3.2	Equipment.....	33
3.3	Test Materials.....	34
3.4	Proprietary Data.....	34
4.0	TEST SPECIFICATIONS.....	35
4.1	Requirements (Strategy of Evaluation).....	35
4.1.1	Rational for ‘Not Applicable’ requirements.....	38
4.2	Hardware Configuration and Design.....	38

4.3	Software System Functions.....	38
4.4	Test Case Design	38
4.4.1	Hardware Qualitative Test Case Design	39
4.4.2	Hardware Environmental Test Case Design	39
4.4.3	Software Module Test Case Design and Data	39
4.4.4	Software Functional Test Case Design and Data.....	39
4.4.5	System-Level Test Case Design	40
4.5	TDP Evaluation.....	40
4.6	Source Code Review.....	48
4.7	Physical Configuration Audit (PCA).....	49
4.8	System Level Testing.....	49
4.8.1	Functional Configuration Audit (FCA)	50
4.8.2	Accuracy	50
4.8.3	System Integration	51
4.8.4	Volume & Stress.....	52
4.8.5	Regression Testing.....	52
4.9	Security Functions	52
4.10	Usability & Accessibility	53
4.11	Hardware Testing.....	53
5.0	TEST DATA	53
5.1	Test Data Recording	53
5.2	Test Data Criteria.....	54
6.0	TEST PROCEDURES AND CONDITIONS	54
6.1	Facility Requirements	54
6.2	Test Set-Up	54
6.3	Test Sequence	54
6.4	Test Operations Procedure.....	55
	APPENDIX A: PROJECT SCHEDULE	A-1

1.0 INTRODUCTION

The purpose of this Test Plan is to document the procedures that Pro V&V, Inc. will follow to perform certification testing during a system modification campaign for the Dominion Voting Systems Democracy Suite (D-Suite) 5.17 Voting System to the requirements set forth for voting systems in the U.S. Election Assistance Commission (EAC) 2005 Voluntary Voting System Guidelines (VVSG), Version 1.0. Prior to submitting the voting system for testing, Dominion Voting Systems submitted an application package to the EAC for certification of the D-Suite 5.17 Voting System. The application was accepted by the EAC and the project was assigned the unique Project Number of DVS-DemSuite5.17.

At test conclusion, the results of all testing performed as part of this test campaign will be submitted to the EAC in the form of a national certification test report.

1.1 Description and Overview of EAC Certified System Being Modified

The D-Suite 5.17 Voting System is a paper-based optical scan voting system. The D-Suite 5.17 consists of the following major components: The Election Management System (EMS), the ImageCast Central (ICC), the ImageCast Precinct (ICP and ICP2), ImageCast X (ICX) VVPAT BMD, ImageCast Evolution (ICE), and the ImageCast X (ICX) BMD. The D-Suite 5.17 Voting System configuration is a modification from the EAC approved D-Suite 5.5-D system configuration.

1.1.1 Baseline Certified System

The EAC Certified System that is the baseline for the submitted modification is described in the following subsections. All information presented was derived from the previous Certification Test Report, the EAC Certificate of Conformance and/or the System Overview.

The baseline system for this modification is the D-Suite 5.5-D Voting System. The D-Suite 5.5-D Voting System is a paper-based optical scan voting system with a hybrid paper/DRE option consisting of the following major components: The Election Management System (EMS), the ImageCast Central (ICC), the ImageCast Precinct (ICP and ICP2), the ImageCast Evolution (ICE), the ImageCast X (ICX) DRE w/ Reports Printer, ImageCast X (ICX) DRE w/ voter-verifiable paper audit trail (VVPAT), and the ImageCast X ballot marking device (BMD).

Detailed descriptions of the D-Suite 5.5-D test campaign are contained in Pro V&V Report No.TR-01-01-DVS-49-01.04, which is available for viewing on the EAC's website at www.eac.gov.

The following subsections describe the baselined D-Suite 5.5-D Voting System.

Election Management System (EMS)

The D-Suite 5.5-D EMS consists of various components running as either a front-end/client application or as a back-end/server application. A listing of the applications and a brief description of each is presented below.

Front-end/Client applications:

- EMS Adjudication: Represents the client component responsible for adjudication, including reporting and generation of adjudicated result files from ImageCast Central tabulators and adjudication of write-in selections from ImageCast Precinct and ImageCast Central tabulators. This client component is installed on both the server and the client machines.
- EMS Audio Studio: A client application that represents an end-user helper application used to record audio files for a given election project. As such, it is utilized during the pre-voting phase of the election cycle.
- EMS Election Data Translator: End-user application used to export election data from election project and import election data into election project.
- EMS Election Event Designer: A client application that integrates election definition functionality together with ballot styling capabilities and represents a main pre-voting phase end-user application
- ImageCast Voter Activation: An application, installed on a workstation or laptop at the polling place, which allows the poll workers to program smart cards for voters. The smart cards are used to activate voting sessions on ImageCast X.
- EMS Results Tally and Reporting: A client application that integrates election results acquisition, validation, tabulation, reporting, and publishing capabilities and represents the main post-voting phase end-user application.

Back-end/Server applications:

- EMS Adjudication Service: Represents a server side application which provides ballot information such as contests, candidates and their coordinates from EMS to the Adjudication application.
- EMS Application Server: Represents a server side application responsible for executing long running processes, such as rendering ballots, generating audio files and election files, etc.
- EMS Database Server: Represents a server side RDBMS repository of the election project database which holds all the election project data, including pre-voting and post-voting data.
- EMS Data Center Manager: A server application that represents a system level configuration application used in EMS back-end data center configuration.
- EMS File System Service: A back-end application that acts as a stand-alone service that runs on client machines, enabling access to low level operating system API for partitioning CF cards, reading raw partition on ICP CF card, etc.

- EMS NAS Server: Represents a server side file repository of the election project file based artifacts, such as ballots, audio files, reports, log files, election files, etc.
- Smart Card Helper Service: A service that is installed on a workstation or laptop at the polling place, and provides required data format for programming smart cards for ImageCast devices, or, for jurisdiction's voting registration system in case of integration.

ImageCast Precinct (ICP)

The ImageCast Precinct (ICP) device is a precinct optical scan ballot counter designed to provide three major functionalities: ballot scanning and tabulation, accessible voting, and ballot review and second chance voting. The ICP is used in conjunction with ImageCast compatible ballot storage boxes. The system is designed to scan marked paper ballots printed on standard or secure paper stock, interpret voter marks on the paper ballot, and safely store and tabulate each vote from each paper ballot. The ICP also supports enhanced accessibility voting through optional accessories connected to the ImageCast unit.

ImageCast Precinct (ICP2)

The ImageCast Precinct (ICP2) device is a precinct-based optical scan ballot counter designed to provide two major functionalities: ballot scanning and tabulation and ballot review and second chance voting. The ICP2 is used in conjunction with ImageCast compatible ballot storage boxes. The system is designed to scan marked paper ballots printed on standard or secure paper stock, interpret voter marks on the paper ballot, and safely store and tabulate each vote from each paper ballot.

ImageCast Evolution (ICE)

The ICE device is a precinct-level optical scan ballot counter designed to perform three major functions: ballot scanning and tabulation, ballot review and second chance voting, and accessible voting and ballot marking.

ImageCast Central (ICC) Count Scanner

The ImageCast Central (ICC) is a high-speed, central ballot optical scan tabulator based on Commercial off the Shelf (COTS) hardware, coupled with the custom-made ballot processing application software. It is used for high speed scanning and counting of paper ballots.

ImageCast X (ICX)

The Democracy Suite ImageCast X (ICX) consists exclusively of COTS available hardware and operating system, while the applications installed on top customize its behavior to turn it into a Ballot Marking Device (BMD) or a Ballot Marking Device (BMD) and Tabulator device. ICX application is the application that verifies voter's session eligibility, using the smart card and then presents the appropriate ballot to the voter. When a voter is satisfied with choices selected, ICX application verifies them and produces a marked printed ballot or stores the votes onto a memory device. The ICX is designed to perform the following functions:

- Ballot marking and printing
- Ballot review and second chance voting
- Accessible voting and ballot marking
- Saving voting results (in VVPAT BMD mode)
- Printing votes on a voter verifiable paper audit trail device (when VVPAT is in use)

The proprietary and COTS equipment provided by the manufacturer as part of the baseline 5.5-D test campaign is listed below:

Election Administration

Democracy Suite Election Management System (EMS)

❖ Dominion Voting Systems Democracy Suite EMS 5.5.52.6, containing:

- Election Event Designer
- Results Tally and Reporting
- Audio Studio
- Election Data Translator
- Application Server
- Database Server
- EMS Logger
- NAS Server
- EMS Server Applications & Services
 - Data Center Manager
 - File System Service
 - Adjudication Service (version 5.5.40.6)
 - Smart Card Helper Service

- ❖ DCF version (ICP/ICC) DCF_5.5.45.3_20220118
- ❖ MBS version (ICE) ICE_5.5.6.3_EAC_5.5-C_20200415
- ❖ MBS version (ICP2) ICP2_5.5.2.1_EAC_5.5-C_20200415
- ❖ MCF version (ICX) MCF_5.5.24.1_20220112

❖ Optional Adjudication 5.5.40.3

COTS Hardware and Software

- EMS Standard Server Configuration
 - Microsoft Windows Server 2012 R2 with SP3
 - Microsoft SQL Server 2016 Standard with SP3
 - Server computer system per *2.02 Democracy Suite System Configuration Overview*
 - Dell PowerEdge R640
 - Dell PowerEdge R630
 - Dell PowerEdge R620
- EMS Express Server Configuration
 - Microsoft Windows 10 Professional
 - Microsoft SQL Server 2016 Express with SP3
 - Desktop computer system per *2.02 Democracy Suite System Configuration Overview*
 - Dell Precision 3450 XE
 - Dell Precision 3440 XE
 - Dell Precision 3431
 - Dell Precision 3430
 - Dell Precision T3420
- Client Workstation Configuration
 - Microsoft Windows 10 Professional
 - Desktop computer system per *2.02 Democracy Suite System Configuration Overview*
 - Dell Precision 3450 XE
 - Dell Precision 3440 XE
 - Dell Precision 3431
 - Dell Precision 3430
 - Dell Precision T3420

- Dell Precision T1700
- EMS COTS Software common to Standard and Express configurations
 - Microsoft.Net Framework 4.5
 - Microsoft.Net Framework 3.5
 - Microsoft IIS (part of the Windows installation, not a separate item)
 - Microsoft Visual J# 2.0
 - Microsoft Visual C++ 2015 Redistributable
 - Java SE Runtime Environment 6.0 Update 20 or later
 - Dallas 1-Wire Device Driver version 4.0.5 or newer
 - RAID utility
 - Adobe Reader DC or later
- Optional COTS Software for Standard and Express configurations
 - Microsoft Windows Defender (Express Server and Client Workstations)
 - Avast! anti-virus software (Standard Server)
 - Cepstral Voices (English, Spanish, etc.) 6.2.3
 - Microsoft Excel 2010 or later
 - Additional Fonts (Arial narrow fonts, 2.37a)
 - UPS drivers
 - Printer drivers
- Auxiliary Equipment:
 - iButton to 1-Wire USB Adapter: Dallas Maxim DS1402-RP8+
 - iButton Reader/Writer: Dallas Maxim DS9490R#
 - Compact Flash Reader: Lexar Professional USB 3.0 Dual-Slot Card Reader
 - Compact Flash Reader: Kingston USB 3.0 High-Speed Media Reader
 - Compact Flash Reader: Hoodman Steel USB3
 - Smart Card Reader: Advanced Card Systems ACR38U

- Smart Card Reader: Advanced Card Systems ACR39U
- Smart Card Reader: HID Global Omnikey 3121
- LCD Monitor:
 - Dell P2419H
 - Dell P2417H
 - Dell KM632
 - Dell P2414Hb
 - Dell U2414H
- Ethernet Switch: Dell x1026
- Ethernet Switch: Dell x1008
- Ethernet Switch: Cisco 8-port Switch (CBS350-8T-E-2G)
- Ethernet Switch: Cisco 24-port Switch (CBS350-24T-4G)
- Mini-Server Rack: StarTech RK1236BKF
- Rack Power Distribution Unit: APC AP9562
- UPS:
 - Tripp Lite SMART1500RMXL2U
 - APC SMT1500 Smart-UPS
 - APC SMT1500C Smart-UPS
 - APC BE600M1
 - APC BR1000G
 - CyberPower PR1500LCD
 - CyberPower PR1500LCD-VTVM
- Keyboard, Mouse, Headset with microphone, Audio Adapter networking switch – COTS computing accessories
- EMS Report Printer: HP M404dn laser or equivalent
- Election media:

- iButton (Pollworker): Dallas Maxim DS1963S-F5+ (w/Black Key Ring Mount DS9093A+)
- Compact Flash Memory Cards (16GB): Centon C4-CM-CF-16.4
- USB Memory Device (16GB): Centon S4-CM-U3P2-16.1
- USB Memory Device (16GB): Apacer EH353-M APHA016GAG0CG-3TM
- USB Memory Device (8GB): Centon S4-CM-U3P2-8.1
- USB Memory Device (8GB): Apacer EH353-M APHA008GAG0CG-3TM
- USB Memory Device (4GB): Verbatim 97087
- Smart Cards: ACOS-6-64

ImageCast Voter Activation (ICVA)

❖ Software version: 5.5.52.6

COTS Hardware and Software

- Client Workstation Configuration
 - Microsoft Windows 10 Professional
 - Desktop computer system per 2.02 Democracy Suite System Configuration Overview
 - Dell Latitude 3420
 - Dell Latitude 3410 (SSD)
 - Dell Latitude 3410 (HDD)
 - Dell Latitude 3400
 - Dell Latitude 3490
 - Dell Latitude e3480
 - Dell Latitude e3470
 - Dell Latitude e7450
- Auxiliary Equipment:
 - Smart Card Reader: Advanced Card Systems ACR38U
 - Smart Card Reader: Advanced Card Systems ACR39U
 - Smart Card Reader: HID Global Omnikey 3121

- Election Media:
 - USB Memory Device (16GB): Centon S4-CM-U3P2-16.1
 - USB Memory Device (16GB): Apacer EH353-M APHA016GAG0CG-3TM
 - USB Memory Device (8GB): Centon S4-CM-U3P2-8.1
 - USB Memory Device (8GB): Apacer EH353-M APHA008GAG0CG-3TM
 - USB Memory Device (4GB): Verbatim 97087
 - Smart Cards: ACOS-6-64

Central Count

ImageCast Central Count (ICC)

- ❖ ICC software application: version 5.5.52.2

COTS Software

- ICC COTS computer operating system: Windows 10 (64-bit) Professional edition
- Microsoft Windows Defender
- Microsoft Visual C++ 2015 Redistributable
- Dallas Maxim: 1-wire driver - version 4.0.5 or newer, 64 bit (32 bit as needed)
- Canon: DR-G2140 driver - version 1.1 SP2
- Canon: DR-G1130 driver - version 1.2 SP6
- Canon: DR-M160-II driver - version 1.2 SP6
- Canon: DR-M260 driver - version 1.1 SP2
- InoTec: HiPro 821 driver - version 1.2.0.5

COTS Hardware:

- ICC Scanner: Canon DR-G2140
 - Imprinter (optional)
- ICC Scanner: Canon DR-G1130
 - Imprinter (optional)

- ICC Scanner: Canon DR-M160-II
- ICC Scanner: Canon DR-M260
- ICC Scanner: InoTec HiPro 821 with integrated imprinter
- Canon Scanner Client Workstation Configuration:
 - Desktop or All-in-One computer system per *2.02 Democracy Suite System Configuration Overview*
 - Dell Precision 3450 XE
 - Dell Precision 3440 XE
 - Monitor: Planar PCT2235
 - Dell Optiplex 5270 AIO
 - Dell Optiplex 3050 AIO
 - Dell Optiplex 7440 AIO
 - Dell Optiplex 9030 AIO
 - Dell Optiplex 9020 AIO
 - Dell Optiplex 9010 AIO
- InoTec HiPro Scanner Client Workstation Configuration:
 - Desktop computer system per *2.02 Democracy Suite System Configuration Overview*
 - Dell Optiplex XE3
 - Dell Optiplex 7070
 - Dell Optiplex 7060
 - Dell Optiplex 7050
 - Monitor: Lenovo 10QXP1US
 - Monitor: Lenovo 11GCP1US
 - Monitor: Dell P2418HT
- Auxiliary Equipment:
 - iButton to 1-Wire USB Adapter: Dallas Maxim DS1402-RP8+
 - iButton Reader/Writer: Dallas Maxim DS9490R#

- Compact Flash Reader: Lexar Professional USB 3.0 Dual-Slot Card Reader
- Compact Flash Reader: Kingston USB 3.0 High-Speed Media Reader
- Compact Flash Reader: Hoodman Steel USB3
- Auxiliary Equipment:
 - iButton: Dallas Maxim DS1963S-F5+ (with Key Ring Mount DS9093A+)
 - USB Memory Device (16GB): Centon S4-CM-U3P2-16.1
 - USB Memory Device (16GB): Apacer EH353-M APHA016GAG0CG-3TM
 - USB Memory Device (8GB): Centon S4-CM-U3P2-8.1
 - USB Memory Device (8GB): Apacer EH353-M APHA008GAG0CG-3TM
 - USB Memory Device (4GB): Verbatim 97087
 - Compact Flash Memory Cards (32GB): RiTek RDCF32G-233XMCB2-i
 - Compact Flash Memory Cards (32GB): SanDisk SDCFX-032G
 - Compact Flash Memory Cards (16GB): Centon C4-CM-CF-16.4
 - Compact Flash Memory Cards (16GB): RiTek RDCF16G-233XMCB2-i
 - Compact Flash Memory Cards (16GB): SanDisk SDCFX-016G
 - Compact Flash Memory Cards (8GB): RiTek RDCF8G-233XMCB2-i
 - Compact Flash Memory Cards (8GB): SanDisk SDCFHS-008G
 - Compact Flash Memory Cards (4GB): RiTek RDCF8G-233XMCB2-i
 - Compact Flash Memory Cards (4GB): SanDisk SDCFHS-004G

Precinct Vote Capture

ImageCast X with BMD (ICX BMD)

- ❖ Firmware version: 5.5.25.2
- ❖ Hardware version:
 - Avalue SID-15V-Z37 (15.6 in. screen-Classic)
 - Avalue SID-21V-Z37 (21.5 in. screen-Classic)
 - Avalue HID-21V-BTX (21.5 in. screen-Prime) (steel or aluminum chassis)

Optional Hardware

- Accessible-Tactile Interface (ATI-USB) box
- ICX Classic BMD Transport Bag
- ICX Prime BMD Transport Bag
- ICX Privacy Screen
- ICX Voting Booth
- ICX Prime Battery Charger – Dual Bay

COTS Hardware

- UPS:
 - APC SMT-1500
 - APC SMT-1500C
 - CyberPower PR1500LCD
 - CyberPower PR1500LCD-VTVM
- Printer:
 - HP M402dn
 - HP M402dne
 - HP M501dn
- Election Media
 - USB Memory Device (16GB): Centon S4-CM-U3P2-16.1
 - USB Memory Device (16GB): Apacer EH353-M APHA016GAG0CG-3TM
 - USB Memory Device (8GB): Centon S4-CM-U3P2-8.1
 - USB Memory Device (8GB): Apacer EH353-M APHA008GAG0CG-3TM
 - USB Memory Device (4GB): Verbatim 97087

- Smart Cards: ACOS-6-64

COTS Software

- Android 4.4.4-098 (Avalue Classic)
- Android 5.1.1-1.17.3 (Avalue Prime)
- Google TTS

Optional COTS Software

- None

Optional COTS Hardware

- Headphone: Cyber Acoustics ACM-70, ACM-70B or equivalent
- Sip & puff: Enabling Device #972
- Sip & puff straws: #970K (Pkg of 10)
- Paddle switches: Enabling Device #971
- Paddle switches: AbleNet 10033400 (2x)
- Paddle Switch Cable: Hosa Technology YMM-261 (for use with AbleNet switches)

ImageCast X DRE with VVPAT (ICX DRE w/VVPAT)

❖ Firmware version: 5.5.25.2

❖ Hardware version:

- Avalue HID-21V-BTX (21.5 in. screen-Prime) (steel or aluminum chassis)

Optional Hardware

- Accessible-Tactile Interface (ATI-USB) box
- ICX Prime VVPAT Transport Bag
- ICX Leg Assembly
- ICX Privacy Screen
- ICX Voting Booth
- ICX Prime Battery Charger – Dual Bay

COTS Hardware

- VVPAT Printer: KFI 702-75250014A (V1)
- VVPAT Printer: KFI 702-75250014C (V1-C)
- Election Media
 - USB Memory Device (8GB): Centon S4-CM-U3P2-8.1
 - USB Memory Device (16GB): Centon S4-CM-U3P2-16.1
 - USB Memory Device (8GB): Apacer EH353-M APHA008GAG0CG-3TM
 - USB Memory Device (16GB): Apacer EH353-M APHA016GAG0CG-3TM
 - USB Memory Device (4GB): Verbatim 97087
 - Smart Cards: ACOS-6-64

COTS Software

- Android 5.1.1-1.17.3 (Avalue Prime)
- Google TTS

Optional COTS Software

- None

Optional COTS Hardware

- Headphone: Cyber Acoustics ACM-70, ACM-70B or equivalent
- Sip & puff: Enabling Device #972
- Sip & puff straws: #970K (Pkg of 10)
- Paddle switches: Enabling Device #971
- Paddle switches: AbleNet 10033400 (2x)
- Paddle Switch Cable: Hosa Technology YMM-261 (for use with AbleNet switches)

ImageCast X DRE with Report Printer (ICX DRE w/Rpt Ptr)

- ❖ Firmware version: 5.5.25.2
- ❖ Hardware version:
 - Avalue HID-21V-BTX (21.5 in. screen-Prime) (steel or aluminum chassis)

Optional Hardware

- Accessible-Tactile Interface (ATI-USB) box
- ICX Prime Transport Bag
- ICX Leg Assembly
- ICX Privacy Screen
- ICX Voting Booth
- ICX Prime Battery Charger – Dual Bay

COTS Hardware

- Report Printer: Seiko RP-D10
- Election Media:
 - USB Memory Device (8GB): Centon S4-CM-U3P2-8.1
 - USB Memory Device (16GB): Centon S4-CM-U3P2-16.1
 - USB Memory Device (8GB): Apacer EH353-M APHA008GAG0CG-3TM
 - USB Memory Device (16GB): Apacer EH353-M APHA016GAG0CG-3TM
 - USB Memory Device (4GB): Verbatim 97087
 - Smart Cards: ACOS-6-64

COTS Software

- Android 5.1.1-1.17.3 (Avalue Prime)
- Google TTS

Optional COTS Software

- None

Optional COTS Hardware

- Headphone: Cyber Acoustics ACM-70, ACM-70B or equivalent
- Sip & puff: Enabling Device #972
- Sip & puff straws: #970K (Pkg of 10)
- Paddle switches: Enabling Device #971
- Paddle switches: AbleNet 10033400 (2x)
- Paddle Switch Cable: Hosa Technology YMM-261 (for use with AbleNet switches)

ImageCast Evolution (ICE)

- ❖ Firmware version: 5.5.6.5
- ❖ Hardware version: PCOS 410A
- IR Sensor Board Firmware version: 1.0.003
- Motherboard FPGA version: 1.1.5
- Scanner Board FPGA version: 1.1.2
- Logger Controller version: 2.0.2
- Power Controller version: 3.0.5
- Integrated Printer Controller version: 4.1.6
- Bootloader version: 1.3.4.63
- Ballot Box Options
 - Stackable Molded Plastic: BOX-410A
 - Foldable Coroplast Plastic: BOX-420A

Optional Hardware

- Accessible-Tactile Interface (ATI) box
- Light Pole for Ballot Boxes

COTS Software

- None

COTS Hardware

- Election media:
 - iButton (Pollworker): Dallas Maxim DS1963S-F5+ (w/Black Key Ring Mount DS9093A+)
 - iButton (Admin/Tech): Dallas Maxim DS1963S-F5+ (w/Yellow Key Ring Mount DS9093AY+)
 - Compact Flash Memory Cards (32GB): RiTek RDCF32G-233XMCB2-i
 - Compact Flash Memory Cards (32GB): SanDisk SDCFX-032G
 - Compact Flash Memory Cards (16GB): Centon C4-CM-CF-16.4
 - Compact Flash Memory Cards (16GB): RiTek RDCF16G-233XMCB2-i
 - Compact Flash Memory Cards (16GB): SanDisk SDCFX-016G
 - Compact Flash Memory Cards (8GB): RiTek RDCF8G-233XMCB2-i
 - Compact Flash Memory Cards (4GB): RiTek RDCF8G-233XMCB2-i

Optional COTS Software

- None

Optional COTS Hardware

- Headphone: Cyber Acoustics ACM-70, ACM-70B or equivalent
- Sip & puff: Enabling Device #972
- Sip & puff straws: #970K (Pkg of 10)
- Paddle switches: Enabling Device #971
- Paddle switches: AbleNet 10033400 (2x)
- Paddle Switch Cable: Hosa Technology YMM-261 (for use with AbleNet switches)

ImageCast Evolution (ICE w/ Dual Monitor)

- ❖ Firmware version: 5.5.6.5
- ❖ Hardware version: PCOS 410A
 - IR Sensor Board Firmware version: 1.0.003

- Motherboard FPGA version: 1.1.5
- Scanner Board FPGA version: 1.1.2
- Logger Controller version: 2.0.2
- Power Controller version: 3.0.5
- Integrated Printer Controller version: 4.1.6
- Bootloader version: 1.3.4.63
- Accessible-Tactile Interface (ATI) box (w/ 15 ft. cable)
- Ballot Box Options
 - Stackable Molded Plastic: BOX-410A
 - Foldable Coroplast Plastic: BOX-420A

Optional Hardware

- Light Pole for Ballot Boxes

COTS Hardware

- Secondary Monitor: AOC e1649FWU
- Secondary Monitor: Display Logic LM15.6-USB-DV.B
- Cable, USB, 10 ft.: TE Connectivity 1496476-4
- Cable, USB, 10 ft.: Keyjoy 131-000004
- Headphone: Cyber Acoustics ACM-70, ACM-70B or equivalent
- Election media:
 - iButton (Pollworker): Dallas Maxim DS1963S-F5+ (w/Black Key Ring Mount DS9093A+)
 - iButton (Admin/Tech): Dallas Maxim DS1963S-F5+ (w/Yellow Key Ring Mount DS9093AY+)
 - Compact Flash Memory Cards (32GB): RiTek RDCF32G-233XMCB2-i
 - Compact Flash Memory Cards (32GB): SanDisk SDCFX-032G
 - Compact Flash Memory Cards (16GB): Centon C4-CM-CF-16.4
 - Compact Flash Memory Cards (16GB): RiTek RDCF16G-233XMCB2-i

- Compact Flash Memory Cards (16GB): SanDisk SDCFX-016G
- Compact Flash Memory Cards (8GB): RiTek RDCF8G-233XMCB2-i
- Compact Flash Memory Cards (4GB): RiTek RDCF8G-233XMCB2-i

COTS Software

- None

Optional COTS Software

- None

Optional COTS Hardware

- Sip & puff: Enabling Device #972
- Sip & puff straws: #970K (Pkg of 10)
- Paddle switches: Enabling Device #971
- Paddle switches: AbleNet 10033400 (2x)
- Paddle Switch Cable: Hosa Technology YMM-261 (for use with AbleNet switches)

ImageCast Precinct (ICP)

- ❖ Firmware version: 5.5.45.3
- ❖ Hardware version: PCOS-320A and PCOS-320C
- Ballot Box Options
 - Stackable Molded Plastic: BOX-330A
 - Foldable Coroplast Plastic: BOX-340C (without Latch)
 - Foldable Coroplast Plastic: BOX-341C (with Latch)
 - Collapsible Plastic: ElectionSource IM-COLLAPSIBLE BIN
 - Accessories: ICP Baseplate Adapter Kit for all listed Ballot Boxes

Optional Hardware

- Accessible-Tactile Interface (ATI) box

COTS Software

- Boot Loader (COLILO) 20040221

COTS Hardware

- Election media:
 - iButton (Pollworker): Dallas Maxim DS1963S-F5+ (w/Black Key Ring Mount DS9093A+)
 - iButton (Admin/Tech): Dallas Maxim DS1963S-F5+ (w/Blue Key Ring Mount DS9093AB+)
 - Compact Flash Memory Cards (32GB): RiTek RDCF32G-233XMCB2-i
 - Compact Flash Memory Cards (32GB): SanDisk SDCFX-032G
 - Compact Flash Memory Cards (16GB): Centon C4-CM-CF-16.4
 - Compact Flash Memory Cards (16GB): RiTek RDCF16G-233XMCB2-i
 - Compact Flash Memory Cards (16GB): SanDisk SDCFX-016G
 - Compact Flash Memory Cards (8GB): RiTek RDCF8G-233XMCB2-i
 - Compact Flash Memory Cards (8GB): SanDisk SDCFHS-008G
 - Compact Flash Memory Cards (4GB): RiTek RDCF8G-233XMCB2-i
 - Compact Flash Memory Cards (4GB): SanDisk SDCFHS-004G

Optional COTS Software

- None

Optional COTS Hardware

- Headphone: Cyber Acoustics ACM-70, ACM-70B or equivalent
- Sip & puff: Enabling Device #972
- Sip & puff straws: #970K (Pkg of 10)
- Paddle switches: Enabling Device #971
- Paddle switches: AbleNet 10033400 (2x)
- Paddle Switch Cable: Hosa Technology YMM-261 (for use with AbleNet switches)

ImageCast Precinct (ICP2)

- ❖ Firmware version: 5.5.2.1
- ❖ Hardware version: PCOS-330A
- Ballot Box Options
 - Stackable Molded Plastic: BOX-350A
 - Foldable Coroplast Plastic: BOX-340C (without Latch)
 - Foldable Coroplast Plastic: BOX-341C (with Latch)
 - Collapsible Plastic: ElectionSource IM-COLLAPSIBLE BIN

Optional Hardware

- None

COTS Software

- None

COTS Hardware

- Election media:
 - iButton (Pollworker): Dallas Maxim DS1963S-F5+ (w/Black Key Ring Mount DS9093A+)
 - iButton (Admin/Tech): Dallas Maxim DS1963S-F5+ (w/Yellow Key Ring Mount DS9093AY+)
 - SDHC Memory Cards (8GB):
 - Centon S4-CM-SDHU1-8G-002
 - Centon C4-CM-SDU1-8.2

Optional COTS Software

- None

Optional COTS Hardware

- None

1.1.2 Description of Modification

The Dominion Democracy Suite 5.17 Voting System is a modified voting system configuration. The list below includes changes between the current D-Suite 5.17 system and the baseline of the Democracy Suite 5.5-D Voting System, as taken from the *System Change Notes*:

General System Changes

- System and security updates to Democracy Suite:
 - Upgrade to Windows Server 2019 and SQL Server 2019
 - New tool for performing automated hardening procedure of all Windows-based components
 - Additional encryption of election databases on ICE, ICP2 and ICX
 - ICX Smart Card Mutual Authentication and Secure Messaging
- Added support for Provisional Voting with ICX-BMD and QR ballots
- Added support for ICX BMD to produce a Uniform Ballot
- Added additional election-specific information to the barcode on paper ballots
- Added support for Batch and Summary Cards in EED and ICC
- Added ability in EED to configure the number of columns a contest should occupy on the ICX screen
- Improved pseudo random number algorithm

EMS

- System and security updates to the EMS system:
 - Expanding the use of Trusted Certificates
 - Additional Software Encryption of the SQL Database
 - Blocked auto-play for all external media
- Modified UI for managing tabulators
- Election Event Designer updates:
 - Added support for creating sample images of ICX screens to use as sample ballots in voting locations
 - Added support for creating watermark images for paper ballot header, footer, and stubs

- Added information about status of election files in the Tabulator list to indicate whether election media has been programmed or needs to be re-programmed
- Results Tally & Reporting updates:
 - Updated reporting module
 - Added option to redact low turnout by precinct and/or counting group from CVR export for Primary elections

Adjudication

- Added an option to prevent adjudicators from adjudicating contests which do not meet selected out-stack conditions for the project
- New Adjudication Activity Log Report and Export
- Added ability to perform Database Back-ups and Maintenance Procedure

ICC

- Add a configuration setting to force save both sides of the ballot for single sided ballots
- Poll ID field extended from 6 characters in length to 10
- Added a Status/Interrupt Report
- Updated application to support HiPro Firmware version 1.0.1074

ICE

- Ability to display instructional text or contest heading on ICE Screen

ICP2

- Introduced option to specify a different passcode for the Poll Close action
- Added a warning during poll-closing procedure reminding the Poll Worker to ensure that the Auxiliary Bin is empty.
- Added monitoring of the printer sensor to ensure the printer head is in the correct place

ICX

- System and Security updates to the ICX product:
 - Upgrade to Android version 8.1
 - Obfuscation of Source Code
 - Added tabulator serial number to the result files

- Support for Poll Worker and Technician Card expiration date
- Additional USB models added to list of accepted devices
- Added support for following BMD Printers:
 - Avision AP3061
 - HP M404dn
 - HP 4001dn
- Ability to choose if the text size selected on the screen is printed on the BMD QR ballot or not
- Allow Poll Worker to cast a fleeing voter ballot
- New FW version 169 for VVPAT V1 and V1C
- Updates to printed content for VVPAT:
 - Option to not print Total Ballots Cast in report footer
 - Option to print Party information for Primaries
 - Precinct ID changed to Precinct Name
- Reduced amount of paper used when printing on VVPAT

1.1.3 Initial Assessment

Testing from the previous test campaign was used to establish the baseline. The focus of this test campaign is the functional modifications and updates. It was determined the following tasks would be required to verify compliance of the modifications:

- Source Code Review, Compliance Build, Trusted Build, and Build Document Review
- System Level Testing
 - System Integration Testing
 - Accuracy Testing
 - Functional Configuration Audit (FCA), including Regression Testing
 - Volume & Stress
- Technical Documentation Package (TDP) Review
- Hardware Testing

- Electrical
- Operational Environmental
- Electrical Supply
- System Loads & Hardening
- Physical Configuration Audit (PCA)
- Usability/Accessibility

1.1.4 Regression Test

D-Suite 5.17 is a modified voting system configuration that includes functional upgrades and modifications to the baseline system. Modified system testing is an abbreviated testing campaign built upon a regression review of the modifications against the baseline-system and requirements. Modifications, alone and collectively, are reviewed (tested) to see if they fall under any requirement(s), or functionally impact the ability of the modified system to continue to meet requirements. Regression reviews consist of targeted investigations to determine if further testing is necessary based on the nature and scope of the communicated modifications (whether activated or deactivated), and any other submitted information. The objective of regression testing is to establish assurance that the modifications have no adverse impact on the compliance, integrity, or performance of the system.

Regression testing for this test campaign will consist of the execution of the System Integration Testing.

1.2 References

- Election Assistance Commission 2005 Voluntary Voting System Guidelines (VVSG) Version 1.0, Volume I, “Voting System Performance Guidelines”, and Volume II, “National Certification Testing Guidelines”
- Election Assistance Commission Testing and Certification Program Manual, Version 2.0
- Election Assistance Commission Voting System Test Laboratory Program Manual, Version 2.0
- National Voluntary Laboratory Accreditation Program NIST Handbook 150, 2020 Edition, “NVLAP Procedures and General Requirements (NIST Handbook 150)”, dated July 2020
- National Voluntary Laboratory Accreditation Program NIST Handbook 150-22, 2017 Edition, “Voting System Testing (NIST Handbook 150-22)”, dated July 2017
- United States 107th Congress Help America Vote Act (HAVA) of 2002 (Public Law 107-252), dated October 2002
- Pro V&V, Inc. Quality Assurance Manual, Revision 1.0

- Election Assistance Commission “Approval of Democracy Suite 5.17 Voting System Testing Application Package” letter dated October 18, 2022
- EAC Requests for Interpretation (RFI) (listed on www.eac.gov)
- EAC Notices of Clarification (NOC) (listed on www.eac.gov)
- Dominion Voting Systems Technical Data Package (*A listing of the D-Suite 5.17 documents submitted for this test campaign is listed in Section 4.5 of this Test Plan*)

1.3 Terms and Abbreviations

This subsection lists terms and abbreviations relevant to the hardware, the software, or this Test Plan.

“ADA” – Americans with Disabilities Act 1990

“BMD” – Ballot Marking Device

“CM” – Configuration Management

“COTS” – Commercial Off-The-Shelf

“DRE” – Direct Record Electronic

“EAC” – United States Election Assistance Commission

“EMS” – Election Management System

“FCA” – Functional Configuration Audit

“HAVA” – Help America Vote Act

“ICC” – ImageCast Central

“ICE” – ImageCast Evolution

“ICP” – ImageCast Precinct

“ICP2” – ImageCast Precinct 2

“ICX” – ImageCast X

“ISO” – International Organization for Standardization

“NOC” – Notice of Clarification

“PCA” – Physical Configuration Audit

“QA” – Quality Assurance

“RFI” – Request for Interpretation

“TDP” – Technical Data Package

“UPS” – Uninterruptible Power Supply

“VSTL” – Voting System Test Laboratory

“VVPAT” – Voter Verifiable Paper Audit Trail

“VVSG” – Voluntary Voting System Guidelines

1.4 Project Schedule

The Project Schedule for the test campaign is located in Appendix A. The dates on the schedule are not firm dates but planned estimates based on the anticipated project work flow.

1.5 Scope of Testing

The scope of testing focused on the functional updates and modifications. To evaluate the D-Suite 5.17 test requirements, the submitted modifications were evaluated against each section of the EAC 2005 VVSG to determine the applicable tests to be performed.

Based on this assessment, it was determined that multiple areas within the EAC 2005 VVSG would be evaluated to encompass the required tests. A breakdown of the areas and associated tests is listed below:

- EAC 2005 VVSG Volume 1, Section 2: Functional Requirements
 - System Integration Testing
 - Functional Configuration Audit (FCA)
 - Physical Configuration Audit (PCA), including System Loads & Hardening
 - Technical Documentation Package (TDP) Review
 - Accuracy Testing
 - Volume & Stress
- EAC VVSG 1.0 Volume 1, Section 3: Usability & Accessibility
 - Usability & Accessibility Testing
 - Technical Documentation Package (TDP) Review
- EAC VVSG 1.0 Volume 1, Section 4: Hardware Requirements
 - Electrical Tests

- Environmental Tests
- Technical Documentation Package (TDP) Review
- EAC 2005 VVSG Volume 1, Section 5: Software Requirements
 - Source Code Review, Compliance Build, Trusted Build, and Build Document Review
 - Technical Documentation Package (TDP) Review
 - Functional Configuration Audit (FCA)
- EAC VVSG 1.0 Volume 1, Section 7: Security Requirements
 - Security Testing
 - Technical Documentation Package (TDP) Review

Note: Section 6 (Telecommunications Requirements) of the VVSG 1.0 is not applicable to D-Suite 5.17 and was therefore not included in testing. Additionally, Section 8 (Quality Assurance Requirements, and Section 9 (Configuration Management Requirements) were reviewed in previous test campaigns and were not impacted by the submitted modifications.

(Remainder of page intentionally left blank)

1.5.1 Block Diagram

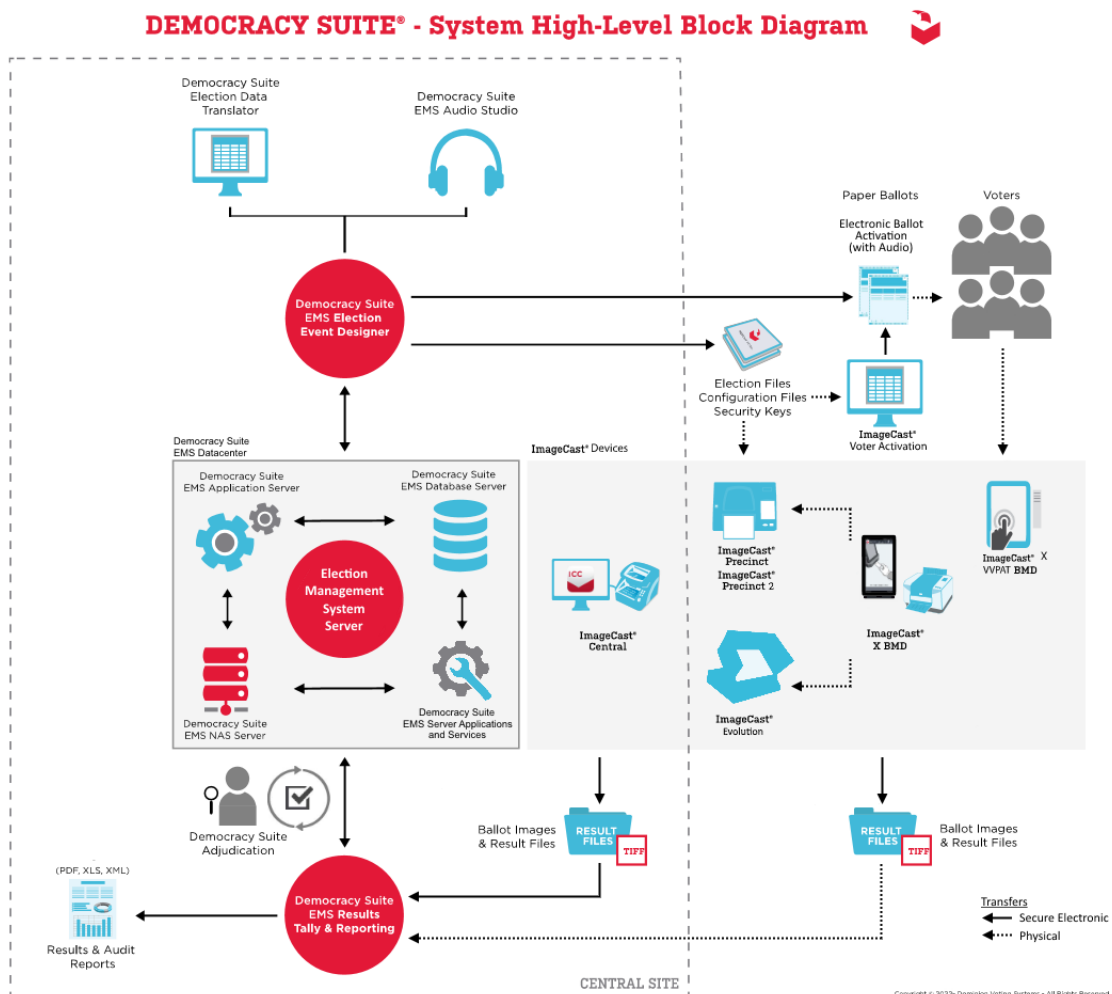


Figure 1-1. D-Suite 5.17 System Overview

1.5.2 System Limits

The system limits that Dominion Voting Systems has stated to be supported by the D-Suite 5.17 are provided in the table below.

Table 1-1. D-Suite 5.17 System Limits

Characteristic	Limit by Configuration		Limiting Component
	Express	Standard	
Ballot positions	462**/292*	462**/292*	22-inch Ballot
Precincts in an election	250	1000	Memory
Contests in an election	250	1000	Memory
Candidates/Counters in an election	2500	10000	Memory
Candidates/Counters in a precinct	462**/240*	462**/240*	22-inch Ballot
Candidates/Counters in a tabulator	2500	10000	Memory
Ballot Styles in an election	750	3000	Memory
Contests in a ballot style	156**/38*	156**/38*	22-inch Ballot
Candidates in a contest	231**/240*	231**/240*	22-inch Ballot
Ballot styles in a precinct	5	5	Memory
Number of political parties	30	30	Memory
“Vote for” in a contest	30**/24*	30**/24*	22-inch Ballot
Supported languages in an election	5	5	Memory
Number of write-ins	462**/24*	462**/24*	22-inch Ballot

* Reflects the system limit for a ballot printed in landscape

** Reflects the system limit for a ballot printed in portrait.

1.5.3 Supported Languages

The following languages are supported by the D-Suite 5.17 System:

Table 1-2. D-Suite 5.17 Supported Languages

Language	ICE	ICP	ICP2	ICX
Alaska Native	Yes, if using Latin alphabet	Yes	No	No
Apache	Audio only	Audio only	No	No
Bengali	Yes	Yes	Yes	Yes
Chinese	Yes	Yes	Yes	Yes
English	Yes	Yes	Yes	Yes
Eskimo	Yes, if using Latin alphabet	Yes	No	No
Filipino	Yes, if using Latin alphabet	Yes	Yes	No
French	Yes	Yes	No	Yes
Hindi	Yes	Audio only	Yes	Yes
Japanese	Yes	Yes	Yes	Yes
Jicarilla	Audio only	Audio only	No	No
Keres	Audio only	Audio only	No	No
Khmer	Yes	Audio only	No	No
Korean	Yes	Yes	Yes	Yes

Table 1-2. D-Suite 5.17 Supported Languages *(continued)*

Language	ICE	ICP	ICP2	ICX
Navajo	Audio only	Audio only	No	No
Seminole	Audio only	Audio only	No	No
Spanish	Yes	Yes	Yes	Yes
Tagalog	No	No	No	Yes
Thai	Yes	Audio only	Yes	Yes
Towa	Audio only	Audio only	No	No
Ute	Audio only	Audio only	No	No
Vietnamese	Yes	Yes	Yes	Yes
Yuman	Audio only	Audio only	No	No

Support for all stated languages will be verified; however, only English and Spanish language ballots will be cast during the performance of functional testing. Additionally, one character based language (Chinese) will be tested during System Integration Testing.

For the character based language, the ballot will be created by Pro V&V and voted utilizing both paper ballots and ADA voting devices along with all applicable peripherals. The Chinese Language for the ballot will be created using a readily available online translation tool. The translated language text will be entered into the Election Event Designer Application. A ballot preview will be generated in the EED application. The Chinese characters displayed in the ballot preview will be compared to the characters generated by the online translation tool, to ensure that the characters match. The ballots will then be generated and printed, and the election loaded onto the tabulators and the BMD units. The Chinese characters displayed on both the printed ballots and displayed on the BMD units will be compared to the original Chinese Characters generated by the online translation tool to verify that the characters match.

1.5.4 Supported Functionality

The D-Suite 5.17 is designed to support the following voting variations:

- General Election
- Closed Primary
- Open Primary
- Early Voting
- Partisan/Non-Partisan Offices
- Write-In Voting
- Primary Presidential Delegation Nominations
- Split Precincts
- Vote for N of M
- Ballot Rotation
- Provisional or Challenged Ballots

Although the components of the D-Suite 5.17 are capable of supporting Ranked Choice Voting and Recall Issues, these functionalities are not included in the configuration submitted for certification testing.

1.5.5 VVSG

The D-Suite 5.17 Voting System shall be evaluated against the relevant requirements contained in the EAC 2005 VVSG, Version 1.0. To evaluate the D-Suite 5.17 test requirements, the submitted modifications were evaluated against each section of the EAC VVSG 1.0 to determine the applicable tests to be performed. Details of this evaluation are contained in Section 4.1 of this Test Plan.

1.5.6 RFIs

There are no RFIs released by the EAC as of the date of this Test Plan that pertain to this test campaign that were not in effect at the time of the baseline system certification.

1.5.7 NOCs

There are no NOCs released by the EAC as of the date of this Test Plan that pertain to this test campaign that were not in effect at the time of the baseline system certification.

2.0 PRE-CERTIFICATION TESTING AND ISSUES

This section describes previous testing performed prior to submitting the voting system to the EAC.

2.1 Evaluation of Prior VSTL Testing

Pro V&V evaluated to the published Final Test Report for the D-Suite 5.5-D System in order to baseline the current system under test. It was determined testing to satisfy the requirements for this test campaign would focus on functional evaluation of the submitted modifications.

2.2 Evaluation of Prior Non-VSTL Testing

No prior non-VSTL testing of the D-Suite 5.17 modifications were considered for this test campaign.

2.3 Known Field Issues

D-Suite 5.17 is a modification to a previously certified system (D-Suite 5.5-D). There are no known field issues related to the baseline D-Suite 5.5-D system. Any known field issues on previously certified versions derived from the original D-Suite 5.0 system are addressed in the associated published test plans.

3.0 MATERIALS REQUIRED FOR TESTING

The following sections list all materials needed to enable the test engagement to occur.

The materials required for testing of the D-Suite 5.17 System include all materials to enable the test campaign to occur. This includes the applicable hardware and software as well as the TDP, test support materials, and deliverable materials, as described in the following subsections.

3.1 Software

This subsection lists the proprietary and COTS software to be provided by the manufacturer as part of the test campaign.

In addition to the baseline system software identified in Section 1.1.1 of this Test Plan, the following software is required for test performance:

Table 3-1. Software

System Component	Software or Firmware Version
ImageCast Precinct	5.17.13.1
ImageCast Precinct 2	5.17.13.1
ImageCast Evolution	5.17.13.1
ImageCast X	5.17.13.1
ImageCast Voter Activation	5.17.13.1
ImageCast Central	5.17.13.1
Democracy Suite Election Management System	5.17.13.1
Democracy Suite EMS Adjudication	5.17.13.1
Democracy Suite EMS Adjudication Services	5.17.13.1

Pro V&V will perform a comparison on the submitted source code against the previously certified versions. Regression testing will be performed to verify successful implementation of changes.

3.2 Equipment

This subsection lists the proprietary and COTS equipment to be provided by the manufacturer as part of the test campaign.

In addition to the baseline system hardware identified in Section 1.1.1 of this Test Plan, the following hardware is required for test performance:

Table 3-2. Hardware

System Component	Hardware Version
ImageCast Precinct	PCOS-320A, PCOS-320C
ImageCast Precinct 2	PCOS-330A
ImageCast Evolution	PCOS-410A
ImageCast X (BMD)	Avalue SID-15V-Z37, Avalue SID-21V-Z37, Avalue HID-21V-BTX, HP M402dn, HP M402dne, HP M501dn, HP M404dn, HP 4001dn, Avision AP3061
ImageCast X VVPAT BMD	Avalue HID-21V-BTX (21.5 in. screen-Prime) (steel or aluminum chassis)
ImageCast Central	Canon DR-G1130, Canon DR-M160 II, Canon DR-M260, InoTec HiPro 821, Canon DR-G2140

For COTS equipment, every effort will be made to verify that the COTS equipment has not been modified for use. This will be accomplished by performing research using the COTS equipment manufacturer’s websites based on the serial numbers and service tag numbers for each piece of equipment. Assigned test personnel will evaluate COTS hardware, system software and communications components for proven performance in commercial applications other than voting. For PCs, laptops, and servers, the service tag information will be compared to the system information found on each machine. Physical external and internal examination will also be performed when the equipment is easily accessible without the possibility of damage. Hard drives, RAM memory, and other components will be examined to verify that the components match the information found on the COTS equipment manufacturer’s websites.

3.3 Test Materials

This subsection lists the test materials required to execute the required tests throughout the test campaign.

Table 3-3. Required Test Materials

Material	Description(s)
Tamper Evident Security Seals	Adhesive tamper evident security seal, Novavision Part# XSG21-08RESN
Printer Cartridges	HP LaserJet CF226X
Smart Cards	Programmable Smart Cards for voters, poll workers, and technicians for the ICX System
ImageCast Precinct Cleaning Sheets	Cleaning Sheets for ImageCast Precinct tabulator Part# CSHT-100B
Stereo Breakout Cable	3.5mm stereo male plug to dual 3.5mm mono female plugs
3.5mm Stereo Cable	3.5mm stereo male plug to 3.5mm stereo female plug
Compact Flash Cards	SanDisk Ultra 4Gb and Centon 16GB Compact Flash Cards
iButton Security Tokens	iButton Security Token with lanyards
Permanent Markers	Fine Tip Sharpie Permanent Markers
Ethernet Cables	Cat5e Ethernet Cables
ICE Paper Rolls	Replacement Thermal Paper Rolls for the ImageCast Evolution tabulator
ICP Paper Rolls	Replacement Thermal Paper Rolls for the ImageCast Precinct tabulator
Sip & Puff Disposable Straws	Disposable straws for use with the Sip & Puff input device
Ballot Stock	Ballot Paper Stock for printing ballots
A/C Power Cables	3-Prong A/C Power Cables
USB Thumb drives	4 GB, 8 GB, and 16 GB USB Thumb drives

3.4 Proprietary Data

All data and documentation considered by the manufacturer to be proprietary will be identified and documented in an independent submission along with a Notice of Protected Information.

4.0 TEST SPECIFICATIONS

Certification testing of the Dominion D-Suite 5.17 Voting System submitted for evaluation will be performed to ensure the applicable requirements of the EAC 2005 VVSG and the EAC Testing and Certification Program Manual, Version 2.0 are met. Additionally, all EAC Request for Interpretations (RFI) and Notices of Clarification (NOC) relevant to the system under test will be incorporated in the test campaign. A complete listing of the EAC RFIs and NOCs is available on the EAC website.

4.1 Requirements (Strategy of Evaluation)

To evaluate the D-Suite 5.17 test requirements, the submitted modifications were evaluated against each section of the EAC 2005 VVSG to determine the applicable tests to be performed. Based on this assessment, it was determined the following evaluations would be required to verify compliance of the modifications:

Technical Documentation Package (TDP) Review

A TDP Review will be performed to ensure that all submitted modifications are accurately documented and that the documents meet the requirements of the EAC 2005 VVSG. The preliminary TDP is performed to gather information concerning the system under test and its capabilities or design intentions. Additionally, a TDP review will be performed throughout the test campaign. The TDP Review includes the Initial Review, the Regulatory/Compliance Review, and the Final Review. This review is conducted to determine if the submitted technical documentation meets the regulatory, customer-stated, or end-user requirements and includes reviewing the documents for stated functionality review and verification.

Section 2: Functional Requirements

The requirements in this section shall be tested during the FCA and System Integration Test. This evaluation will utilize baseline test cases as well as specifically designed test cases and will include predefined election definitions for the input data.

The FCA targets the specific functionality claimed by the manufacturer to ensure the product functions as documented. This testing uses both positive and negative test data to test the robustness of the system. The FCA encompasses an examination of manufacturer tests, and the conduct of additional tests, to verify that the system hardware and software perform all the functions described in the manufacturer's documentation submitted in the TDP (such as system operations, voter manual, maintenance, and diagnostic testing manuals). It includes a test of system operations in the sequence in which they would normally be performed. These system operations and functional capabilities are categorized as follows by the phase of election activity in which they are required:

- Overall System Capabilities: These functional capabilities apply throughout the election process. They include security, accuracy, integrity, system audit ability, election management system, vote tabulation, ballot counters, telecommunications, and data retention.
- Pre-voting Capabilities: These functional capabilities are used to prepare the voting system for voting. They include ballot preparation, the preparation of election-specific software (including firmware), the production of ballots, the installation of ballots and ballot counting software (including firmware), and system and equipment tests.
- Voting System Capabilities: These functional capabilities include all operations conducted at the polling place by voters and officials including the generation of status messages.
- Post-voting Capabilities: These functional capabilities apply after all votes have been cast. They include closing the polling place; obtaining reports by voting machine, polling place, and precinct; obtaining consolidated reports; and obtaining reports of audit trails.
- Maintenance, Transportation and Storage Capabilities: These capabilities are necessary to maintain, transport, and store voting system equipment.

The system integration testing addresses the integration of the hardware and software. This testing focuses on the compatibility of the voting system software components and subsystems with one another and with other components of the voting system. During test performance, the system is configured as would be for normal field use.

The accuracy test ensures that each component of the voting system can each process 1,549,703 consecutive ballot positions correctly within the allowable target error rate. The Accuracy test is designed to test the ability of the system to “capture, record, store, consolidate and report” specific selections and absences of a selection. The required accuracy is defined as an error rate. This rate is the maximum number of errors allowed while processing a specified volume of data.

Section 3: Usability and Accessibility Requirements

The requirements in this section shall be tested during the Usability and Accessibility Testing. This evaluation will utilize baseline test cases as well as specifically designed test cases and will include predefined election definitions for the input data.

The usability testing focuses on the usability of the system being tested. Usability is defined generally as a measure of the effectiveness, efficiency, and satisfaction achieved by a specified set of users with a given product in the performance of specified tasks. In the context of voting, the primary user is the voter, the product is the voting system, and the task is the correct recording of the voter ballot selections. Additional requirements for task performance are independence and privacy: the voter should normally be able to complete the voting task without assistance from others, and the voter selections should be private. Accessibility evaluates the requirements for accessibility. These requirements are intended to address HAVA 301 (a) (3) (B).

Section 4: Hardware Requirements

Due to the introduction of the Avison AP3061, HP M404dn, and HP 4001dn as new ICX system components, it was determined that hardware testing would be required. The full suite of hardware electrical testing and all applicable environmental tests will be performed to satisfy the requirements for these components.

Section 5: Software Requirements

The requirements in this section shall be tested utilizing a combination of review and functional testing during the source code review, TDP review, and FCA. Trusted builds from previously certified versions will be used as the baseline for testing.

To perform the source code review, Pro V&V will review the submitted source code to the EAC 2005 VVSG and the manufacturer-submitted coding standards. Prior to initiating the software review, Pro V&V shall verify that the submitted documentation is sufficient to enable: (1) a review of the source code and (2) Pro V&V to design and conduct tests at every level of the software structure to verify that design specifications and performance guidelines are met. The source code review includes a compliance build and a trusted build of the submitted source code.

Section 7: Security Requirements

The requirements in this section shall be tested during the source code review, security tests, and FCA.

To evaluate the integrity of the system, Pro V&V will develop specifically designed test cases in an attempt to defeat the access controls and security measures documented in the system TDP as well as verifying compliance to EAC RFI 2012-05. A threat matrix will be created to determine the risks and vulnerabilities. An evaluation of the system will be accomplished by utilizing a combination of functional testing, source code review, and static code analyzers.

During the security testing, the system shall be inspected for various controls and measures that are in place to meet the objectives of the security standards which include: protection of the critical elements of the voting system; establishing and maintaining controls to minimize errors; protection from intentional manipulation, fraud and malicious mischief; identifying fraudulent or erroneous changes to the voting system; and protecting the secrecy in the voting process.

Additional review will be performed on the implementation of the FIPS cryptographic module in order to:

- Confirm the module (model and version) that is used and implemented is present on the NIST CMVP validated products list.
- Confirm the module in all five instances is configured and used per the NIST published security policy for that module.

Note: Section 6 (Telecommunications Requirements) of the VVSG 1.0 is not applicable to D-Suite 5.17 and is therefore not included in this Test Plan. Additionally, Section 8 (Quality Assurance Requirements) and Section 9 (Configuration Management Requirements) were reviewed in the test campaigns for the baseline systems and are not impacted by the submitted modifications.

4.1.1 Rationale for ‘Not Applicable’ Requirements

All requirements that were excluded from the previous test campaign (D-Suite 5.5-D) were also deemed not applicable to this test campaign. The submitted modifications did not require the evaluation of any requirements that were not included in the baseline system. These requirements, along with the rationale for not evaluating the system to the identified section, are identified below:

- Volume I, Section 6.2.6 (Telecommunications Requirements: Integrity)
 - *These requirements are written for use of public networks. The D-Suite 5.17 does not utilize public networks*
- Volume I, Section 7.5.2-7.5.4 (Security: Protection Against External Threats, Monitoring and Responding to External Threats, and Shared Operating Environment)
 - *These requirements are written for use of public networks. The D-Suite 5.17 does not utilize public networks*
- Volume I, Section 7.6 (Use of Public Communications Networks)
 - *D-Suite 5.17 does not support transmission over public networks.*
- Volume I, Section 7.7 (Wireless Communications)
 - *No wireless technology is utilized in this system.*

4.2 Hardware Configuration and Design

The hardware configuration and design for the modification is unchanged from the baseline system.

4.3 Software System Functions

The D-Suite 5.17 EMS consists of various components running as either a front-end/client application or as a back-end/server application.

4.4 Test Case Design

Test cases are designed based on the manufacturer’s design specifications and the relevant technical requirements set forth by the VVSG. Test cases shall be based on the following aspects of the voting system:

- Hardware qualitative examination design
- Hardware environmental test case design
- Software module test case design and data

- Software functional test case design
- System level test case design

Test cases shall provide information regarding the sequence of actions to be performed for the execution of a test, the requirements being met, the test objective, test configuration, equipment needed, special requirements, assumptions, and pass/fail criteria. Once the test cases are finalized, they will be validated and published for use in the test campaign. The validation of the test case will be accomplished by technical review and approval. This validation will include the following: confirmation of adequate test coverage of all requirements; confirmation that test case results are not ambiguous and gave objective pass/fail criteria; and confirmation that any automated test suites will produce valid results.

4.4.1 Hardware Qualitative Design

Previous hardware examinations were performed on the certified baseline system (D-Suite 5.5-D); however, to satisfy requirements for this campaign, the submitted modifications require the full suite of electrical and environmental hardware testing to be performed on some components.

4.4.2 Hardware Environmental Test Case Design

Testing will be performed by personnel verified by Pro V&V to be qualified to perform the test. Pro V&V will utilize third-party test facilities for performance of the environmental test. Environmental will be performed at the NTS Longmont facility located in Longmont, Colorado. Electrical supply will be performed at the Pro V&V lab. All pre and post operational status checks shall be conducted by Pro V&V personnel.

4.4.3 Software Module Test Case Design and Data

Pro V&V shall review the manufacturer's program analysis, documentation, and module test case design and shall evaluate the test cases for each module with respect to flow control parameters and entry/exit data. As needed, Pro V&V shall design additional test cases to satisfy the coverage criteria specified in Volume II, Section 7.2.1. Component Level Testing will be implemented during the FCA for each component and subcomponent. During the Source Code Review, Compliance Builds, and Security Testing, Pro V&V will utilize limited structural-based techniques (white-box testing). Additionally, specification-based techniques (black-box testing) will be utilized for the individual software components.

Pro V&V shall define the expected result for each test and the ACCEPT/REJECT criteria for certification. If the system performs as expected, the results will be accepted. If the system does not perform as expected, an analysis will be performed to determine the cause. The test will be repeated in an attempt to reproduce the results. If the failure can be reproduced and the expected results are not met, the system will have failed the test. If the results cannot be reproduced, the test will continue. All errors encountered will be documented and tracked through resolution.

4.4.4 Software Functional Test Case Design and Data

Pro V&V shall review the manufacturer-submitted test plans and data to verify that the individual performance requirements specified in the EAC 2005 VVSG and the TDP are reflected in the software. As part of this process, Pro V&V shall review the manufacturer's test case design and prepare a detailed matrix of system functions and the test cases that exercise them. Pro V&V shall also prepare a test procedure describing all test ballots, operator procedures, and the data content of output reports. Pro V&V shall define abnormal input data and operator actions and then design test cases to verify that the system is able to handle and recover from these abnormal conditions. During this review, emphasis shall be placed on those functions where the manufacturer data on module development, such as the system release notes and comments within the source code, reflects significant debugging problems, and on functional tests that resulted in high error rates.

Pro V&V shall define the expected result for each test and the ACCEPT/REJECT criteria for certification. If the system performs as expected, the results will be accepted. If the system does not perform as expected, an analysis will be performed to determine the cause. The test will be repeated in an attempt to reproduce the results. If the failure can be reproduced and the expected results are not met, the system will have failed the test. If the results cannot be reproduced, the test will continue. All errors encountered will be documented and tracked through resolution.

4.4.5 System-Level Test Case Design

System Level testing will be implemented to evaluate the complete system. This testing will include all proprietary components and COTS components (software, hardware, and peripherals) in a configuration of the system's intended use. For software system tests, the tests shall be designed according to the stated design objective without consideration of its functional specification. The system level hardware and software test cases shall be prepared independently to assess the response of the hardware and software to a range of conditions.

4.5 TDP Evaluation

In order to determine compliance of the modified TDP documents with the EAC 2005 VVSG, a limited TDP review shall be conducted. This review will focus on TDP documents that have been modified since the certification of the baseline system. The review will consist of a compliance review to determine if each regulatory, state, or manufacturer-stated requirement has been met based on the context of each requirement. Results of the review of each document will be entered on the TDP Review Checklist and reported to the manufacturer for disposition of any anomalies. This process will be ongoing until all anomalies are resolved.

Any revised documents during the TDP review process will be compared with the previous document revision to determine changes made, and the document will be re-reviewed to determine whether subject requirements have been met. A listing of all documents contained in the D-Suite 5.17 TDP is provided in Table 4-2.

Table 4-1. TDP Documents

Document Number	Description	Version
<i>Adjudication Documents</i>		
2.05	Democracy Suite Adjudication Software Design and Specification	5.17::1
2.08	Democracy Suite Adjudication System Operation Procedures	5.17::1
2.09	Democracy Suite Adjudication System Maintenance Manual	5.17::1
<i>D-Suite Documents</i>		
2.02	Democracy Suite System Overview	5.17::1
2.06	Democracy Suite System Security Specification	5.17::1
2.07	Democracy Suite System Test and Verification Specification	5.17::1
2.10	Democracy Suite Personnel Deployment and Training Requirements	5.17::1
2.11	Democracy Suite Configuration Management Process	5.17::1
2.12	Democracy Suite Quality Assurance Program	5.17::1
2.13	Democracy Suite System Change Notes	5.17::1
<i>EMS Documents</i>		
2.03	Democracy Suite EMS Functional Description	5.17::1
2.05	Democracy Suite EMS Software Design and Specification	5.17::1
2.08	Democracy Suite EMS System Operations Procedures	5.17::1
2.09	Democracy Suite EMS System Maintenance Manual	5.17::1
---	Democracy Suite EMS System Installation and Configuration Procedure	5.17::1
---	Democracy Suite EMS Express Installation and Configuration Procedure	5.17::1
---	Democracy Suite EMS Standard System Installation and Configuration Procedure	5.17::1
<i>ImageCast Central Documents</i>		
2.03	Democracy Suite ImageCast Central Functionality Description	5.17::1
2.05	Democracy Suite ImageCast Central Software Design and Specification	5.17::1
2.08	Democracy Suite ImageCast Central System Operation Procedures	5.17::1
---	Democracy Suite ImageCast Central Installation and Configuration Procedure	5.17::1
<i>ImageCast Evolution Documents</i>		
2.03	Democracy Suite ImageCast Evolution Functionality Description	5.17::1
2.04	Democracy Suite ImageCast Evolution System Hardware Specifications	5.17::1

Table 4-1. TDP Documents (continued)

Document Number	Description	Version
2.05	Democracy Suite ImageCast Evolution Software Design and Specifications	5.17::1
2.08	Democracy Suite ImageCast Evolution System Operation Procedures	5.17::1
2.09	Democracy Suite ImageCast Evolution System Maintenance Manual	5.17::1
<i>ImageCast Precinct Documents</i>		
2.03	Democracy Suite ImageCast Precinct Functionality Description	5.17::1
2.04	Democracy Suite ImageCast Precinct System Hardware Specification	5.17::1
2.04.1	Democracy Suite ImageCast Precinct System Hardware Characteristics	5.17::1
2.05	Democracy Suite ImageCast Precinct Software Design and Specification	5.17::1
2.08	Democracy Suite ImageCast Precinct System Operation Procedures	5.17::1
2.09	Democracy Suite ImageCast Precinct System Maintenance Manual	5.17::1
<i>ImageCast Precinct2 Documents</i>		
2.03	Democracy Suite ImageCast Precinct 2 Functionality Description	5.17::1
2.04	Democracy Suite ImageCast Precinct 2 System Hardware Specifications	5.17::1
2.05	Democracy Suite ImageCast Precinct 2 Software Design and Specifications	5.17::1
2.08	Democracy Suite ImageCast Precinct 2 System Operation Procedures	5.17::1
2.09	Democracy Suite ImageCast Precinct 2 System Maintenance Manual	5.17::1
<i>ImageCast X Documents</i>		
2.03	Democracy Suite ImageCast X Functionality Description	5.17::1
2.05	Democracy Suite ImageCast X Software Design and Specification	5.17::1
2.08	Democracy Suite ImageCast X System Operation Procedures	5.17::1
---	Democracy Suite ImageCast X Classic System Installation and Configuration	5.17::1
---	Democracy Suite ImageCast X Prime System Installation and Configuration Procedure	5.17::1
2.09	Democracy Suite ImageCast X System Maintenance Manual	5.17::1
<i>User Guides</i>		
---	Democracy Suite ImageCast Adjudication User Guide	5.17::1
---	Democracy Suite Election Data Translator User Guide	5.17::1
---	Democracy Suite EMS Audio Studio User Guide	5.17::1
---	Democracy Suite EMS Election Event Designer User Guide	5.17::1

Table 4-1. TDP Documents *(continued)*

Document Number	Description	Version
---	Democracy Suite EMS Results Tally and Reporting User Guide	5.17::1
---	Democracy Suite ImageCast Central User Guide	5.17::1
---	Democracy Suite ImageCast Precinct User Guide	5.17::1
---	Democracy Suite ImageCast Voter Activation User Guide	5.17::1
---	Democracy Suite ImageCast X User Guide	5.17::1
---	Democracy Suite ImageCast Precinct 2 User Guide	5.17::1
<i>DVS Supplementary Documents</i>		
---	Democracy Suite ImageCast C++ Coding Standard	5.17::1
---	Democracy Suite ImageCast Tabulator Surface Cleaning Guide	5.17::1
---	Democracy Suite C# Automated Code Review Process	5.17::1
---	Java Coding Standards	5.17::1
---	JavaScript Coding Standards	5.17::1
---	SD_Google Java Style Dominion	1.0
---	Democracy Suite ImageCast Device Configuration Files	5.17::1
---	Democracy Suite ImageCast Election Definition Files	5.17::1
---	Democracy Suite ImageCast Printing and Finishing Specification	5.17::1
---	Democracy Suite ImageCast Total Results File Format	5.17::1
---	Democracy Suite ImageCast Evolution Firmware Installation Procedure	5.17::1
---	Democracy Suite ImageCast Evolution Level One (L1) Maintenance Manual	5.17::1
---	Democracy Suite ImageCast Evolution Li-Ion Battery Maintenance Procedure	5.17::1
---	Democracy Suite ImageCast Evolution Machine Behavior Settings	5.17::1
---	Usability Test Report of ImageCast Evolution	5.17::1
---	Democracy Suite ImageCast Precinct Li-Ion Battery Maintenance Procedure	5.17::1
---	Democracy Suite ImageCast Precinct Extracting Firmware Contents	5.17::1
---	Democracy Suite ImageCast Precinct Firmware Update Procedure	5.17::1
---	Democracy Suite ImageCast Precinct Level One (L1) Maintenance Manual	5.17::1

Table 4-1. TDP Documents (continued)

Document Number	Description	Version
---	Democracy Suite ImageCast Precinct Technical Guide	5.17::1
---	Usability Test Report Of ImageCast Precinct 5.0 With 36 Participants for VVSG	5.17::1
---	Democracy Suite ImageCast Precinct 2 Extracting Firmware Contents and Verifying SHA256 Values	5.17::1
---	Democracy Suite ImageCast Precinct 2 Level One (L1) Maintenance Manual	5.17::1
---	Democracy Suite ImageCast Precinct 2 Machine Behavior Settings	5.17::1
---	Democracy Suite ImageCast X Machine Configuration File Settings	5.17::1
---	Usability Test Report Of ImageCast X 5.0 With 36 Participants for VVSG 1.0	5.17::1
---	Common Industry Format for Usability Test Report ImageCast X 5.2 with VVPAT	5.17::1
---	Democracy Suite System Identification Guide	5.17::1
---	Usability Study of Dominion Voting Systems ImageCast Evolution Versions 4.1.1.1 and 4.6.1.1	1.0.0::37
---	Democracy Suite ImageCast Voter Activation Installation and Configuration Procedure	5.17::1
<i>COTS Supplemental</i>		
---	Ablenet Single Switch Quickstart Guide	B
---	Cyber Acoustics ACM-70B Stereo Headphones	---
---	ACS AC0s6 Multi-Application and Purse Card Functional Specifications	1.04
---	ACS ACR38x CCID Smart Card Reader Reference Manual	6.05
---	ACS AC0S6 SAM Reference Manual	2.90
---	ACS ACR39 Series PC-linked Smart Card Readers Reference Manual	1.04
---	AOC USB Monitor User Manual E1659Fwu	---
---	APC Installation and Operation Rack Power Distribution Unit AP9562	990-1215D001
---	APC User Manual Back-UPS BE600M1	EN 990-5679
---	APC Installation and Operation Back-UPS Pro BR1000G	EN 990-3804B
---	APC Smart-UPS Installation Guide SMT1500	EN 990-3535F-001

Table 4-1. TDP Documents *(continued)*

Document Number	Description	Version
---	APC Operation Manual Smart-UPS Uninterruptible Power Supply	EN 990-3534F
---	APC Operation Manual Smart-UPS Uninterruptible Power Supply	EN 990-5442D
---	ApriCorn Aegis Secure Key 3z User's Manual	---
---	Apricorn Aegis Secure Key 3NX Compliance	---
---	Avalue HID-21V-BTX Datasheet	---
---	Avalue HID-21V-BTX-A1R User Manual	2.0
---	Avaulue SID-15V Quick Reference Guide	1st Ed
---	Avaulue SID-15V-Z37-A1R User Manual	1.0
---	Avalue SID-21V Fact Sheet	---
---	Avaulue SID-21V-Z37-A1R User Manual	1.0
---	Avualue SID-21V Quick Reference Guide	1st Ed
---	Avision AP30 Series Printer Spec Sheet	---
---	Avision AP30 Series Printer User's Guide	---
---	Avision AP3061 CE Test Report	1.04
---	Avision AP3061 FCC Test Report	3.0
---	Avison AP3061 Statement of Conformity	---
---	Canon DR-G1130 User Guide	CE-IM-910-E1.00
---	Canon DR-G2140 DR-G2110 DR-2090 User Manual	6T3-0034-E1.10
---	Canon DR-M160II User Manual	CE-IM-0953-E1.00
---	Canon DR-M260 User Manual	CE-IM-0991-E1.00
---	Canon imageClass LBP6230dw Spec Sheet	---
---	Canon imageClass LBP6230dw Startup	---
---	Cisco Business 350 Series Managed Switches Data Sheet	C78-744156-01
---	Cisco Business 350 Series Managed Switches Quick Start Guide	---
---	CyberPower Smart App Sinewave Series PR1500LCD User's Manual	---
---	Dell Latitude 3330 Owner's Manual	Rev. A00
---	Dell Latitude 3400 Setup and specifications guide	Rev. A00
---	Dell Latitude 3410 Setup and specifications guide	Rev. A01

Table 4-1. TDP Documents *(continued)*

Document Number	Description	Version
---	Dell Latitude 3410 Product Compliance Datasheet	---
---	Dell Latitude 3420 Setup and Specifications	Rev. A03
---	Dell Latitude 3470 Owner's Manual	Rev. A00
---	Dell Latitude 3480 Owner's Manual	Rev. A00
---	Dell Latitude 3490 Owner's Manual	Rev. A01
---	Dell Latitude E7450 Owner's Manual	Rev. A02
---	Dell Latitude E7470 Owner's Manual	Rev. A02
---	Dell Networking X-Series Spec Sheet	1.9
---	Dell Networking X1000 and X4000 Series Switches User Guide	Rev. A06
---	Dell OptiPlex 3050 All-in-One Owner's Manual	Rev. A00
---	Dell OptiPlex 5270 All-in-One Setup and specifications guide	Rev. A00
---	Dell OptiPlex 7050 Tower Owner's Manual	Rev. A01
---	Dell OptiPlex 7060 Small form Factor Setup and specifications guide	Rev. A01
---	Dell OptiPlex 7070 Tower Setup and Specifications	Rev. A00
---	Dell OptiPlex 7440 All-In-One Owner's Manual	Rev. A01
---	Dell OptiPlex 9010/7010 Desktop Owner's Manual	Rev. A02
---	Dell OptiPlex 9020 Small Form Factor Owner's Manual	Rev. A01
---	Dell OptiPlex 9030 All-In-One Owner's Manual	Rev. A01
---	Dell OptiPlex XE3 Small Form Factor Setup and Specifications	Rev. A01
---	Dell OptiPlex XE3 Small Form Factor Service Manual	Rev. A01
---	Dell OptiPlex XE4 SFF Product Compliance Datasheet	---
---	Dell OptiPlex XE4 Small Form Factor Service Manual	Rev. X-Rev
---	Dell OptiPlex XE4 Small Form Factor Setup and Specifications	Rev. A01
---	Dell P2417H Monitor User's Guide	Rev. A01
---	Dell P2418HT User's Guide	Rev. A00
---	Dell P2418HT Worldwide Regulatory Compliance Engineering and Environmental Affairs	A11
---	Dell P2419H Monitor User's Guide	Rev. A00
---	Dell P2422H Monitor User's Guide	Rev. A02
---	Dell P2422H Product Compliance Datasheet	---

Table 4-1. TDP Documents *(continued)*

Document Number	Description	Version
---	Dell PowerEdge R330 Owner's Manual	Rev. A02
---	Dell EMC PowerEdge R340 Installation and Service Manual	Rev. A00
---	Dell EMC PowerEdge R340 Technical Specifications Guide	Rev. A00
---	Dell PowerEdge R630 Worldwide Regulatory Compliance Engineering and Environmental Affairs	A10
---	Dell PowerEdge R630 Data Sheet	A10
---	Dell PowerEdge R630 Owner's Manual	Rev. A03
---	Dell EMC PowerEdge R640 Installation and Service Manual	Rev. A01
---	Dell EMC PowerEdge R640 Technical Guide	Rev. A00
---	Dell Precision 3430 Small form Factor Service Manual	Rev. A00
---	Dell Precision 3431 Small Form Factor Setup and specifications guide	Rev. A00
---	Dell Precision 3440 SFF Product Compliance Datasheet	---
---	Dell Precision 3440 Small Form Factor Setup and specifications guide	Rev. A00
---	Dell 3450 Small Form Factor Service Manual	Rev. A02
---	Dell Precision 3450 Small Form Factor Setup and Specifications	Rev. A02
---	Dell Precision 3460 SFF Product Compliance Datasheet	---
---	Dell Precision 3460 Small Form Factor Service Manual	Rev. A00
---	Dell Precision 3460 Small Form Factor Setup and Specifications	Rev. A01
---	Dell Precision T1700 Mini-Tower Owner's Manual	Rev. A00
---	Dell Precision Tower 3420 Owner's Manual	Rev. A00
---	Programming Research High-Integrity C++ Coding Standard Manual	2.2
---	HIC++ Standards Model for C++	9.5.4
---	HID Omnikey 3121 Assembly Procedure	Rev. A.0
---	HID Omnikey 3121 User Guide	Rev. A.3
---	HID Omnikey 3121 Datasheet	n/a
---	HP LaserJet Pro 4001, 4002 User Guide	1.0
---	HP LaserJet Pro 4001 series Setup Guide	n/a
---	HP LaserJet Pro M402dn Datasheet	Rev. 2
---	HP Laser Jet Pro M402, M403 User Guide	2

Table 4-1. TDP Documents *(continued)*

Document Number	Description	Version
---	HP Laser Jet Pro M404 User Guide	2
---	HP LaserJet Pro M404dn Spec with Compliance	---
---	HP Laser Jet Pro M501 User Guide	3
---	Dominion Voting Voter-verified paper audit trail Model: VRP3 User Manual Safety precautions	---
---	Kingston USB 3.0 High-Speed Media Reader	---
---	Lenovo ThinkCentre TIO24Gen3Touch User Guide Machine Types: 10QX	1st Ed
---	Lenovo ThinkCentre TIO24Gen4Touch User Guide Machine Types: 11GC	1st Ed
---	Lexar Professional USB 3.0 Dual-Slot Reader	Rev A
---	Planar PCT2235 Touch LED LCD Monitor User's Guide	---
---	SCAMAX 8x1 Ultra High Performance Scanner	---
---	SCAMAX Document Scanner User Manual Type:H12	2019.12
---	Seiko SII Thermal Printer RP-D10 Series User's Guide	U00131353 706
---	Tripp Lite SmartPro Data Sheet	---
---	DisplayLink DL-1x5 Series High Performance USB Virtual Graphics	---
<i>Build Documents</i>		
---	Democracy Suite ImageCast Evolution Firmware Build, Prerequisite Setup and Installation	5.17::1
---	Democracy Suite ImageCast Precinct Firmware Build and Install	5.17::1
---	Democracy Suite ImageCast X Build	5.17::1
---	Democracy Suite Windows Build Document	5.17::1
---	Democracy Suite ImageCast Precinct 2 Build Environment and Prerequisite Setup, Firmware Build and Installation	5.17::1

4.6 Source Code Review

Pro V&V will review the submitted source code to the EAC 2005 VVSG and the manufacturer-submitted coding standards. Prior to initiating the software review, Pro V&V shall verify that the submitted documentation is sufficient to enable: (1) a review of the source code and (2) Pro V&V to design and conduct tests at every level of the software structure to verify that design specifications and performance guidelines are met.

For the ICE software, a combination of Automated Source Code Review and Manual Source Code Review methods will be used to review the source code. For all other components, the submitted source code will be compared to the previously certified Democracy Suite 5.5-D voting

system versions to determine the changes, if any. A combination of Automated Source Code Review and Manual Source Code Review methods will then be used to review the changes in the source code. A compliance review of all modified source code will be performed. Once the compliance review is performed and the source is deemed stable enough to proceed with testing, the source code and all additional packages will be compiled into a Compliance Build. Following successful completion of the FCA, a Trusted Build will be performed. The trusted build consists of inspecting the submitted source code, COTS, and third-party software products and combining them to create the executable code following the documented process from the “United States Election Assistance Commission Voting System Test Laboratory Program Manual” Section 5.5 – 5.7. Performance of the trusted build includes the build documentation review.

The Automated Source Code Review will be performed during the Compliance and Trusted Builds. In addition, 10% of the source code comments will be manually reviewed.

4.7 Physical Configuration Audit (PCA)

The Physical Configuration Audit (PCA) compares the voting system components submitted for qualification to the manufacturer’s technical documentation, and shall include the following activities:

- Establish a configuration baseline of software and hardware to be tested; confirm whether manufacturer’s documentation is sufficient for the user to install, validate, operate, and maintain the voting system
- Verify software conforms to the manufacturer’s specifications; inspect all records of manufacturer’s release control system; if changes have been made to the baseline version, verify manufacturer’s engineering and test data are for the software version submitted for certification
- If the hardware is non-COTS, Pro V&V shall review drawings, specifications, technical data, and test data associated with system hardware to establish system hardware baseline associated with software baseline
- Review manufacturer’s documents of user acceptance test procedures and data against system’s functional specifications; resolve any discrepancy or inadequacy in manufacturer’s plan or data prior to beginning system integration functional and performance tests
- Subsequent changes to baseline software configuration made during testing, as well as system hardware changes that may produce a change in software operation are subject to re-examination

4.8 System Level Testing

System Level Testing will be implemented to evaluate the complete system. This testing will include all proprietary components and COTS components (software, hardware, and peripherals) in a configuration of the system’s intended use. System Level Testing for this campaign includes

the evaluations of the following test areas: FCA, Accuracy Testing, Volume & Stress, and System Integration Testing.

For software system tests, the tests will be designed according to the stated design objective without consideration of its functional specification. The system level hardware and software test cases will be prepared independently to assess the response of the hardware and software to a range of conditions. Pro V&V will review the manufacturer's program analysis, documentation, and module test case design and evaluate the test cases for each module with respect to flow control parameters and entry/exit data.

Pro V&V defines the expected result for each test and the ACCEPT/REJECT criteria for certification. If the system performs as expected, the results will be accepted. If the system does not perform as expected, an analysis was performed to determine the cause. If needed, the test will be repeated in an attempt to reproduce the results. If the failure can't be reproduced and the expected results are not met, the system will be determined to have failed the test. If the results can't be reproduced, the test will continue. All errors encountered will be documented and tracked through resolution.

4.8.1 Functional Configuration Audit (FCA)

The Functional Configuration Audit (FCA) encompasses an examination of manufacturer's tests, and the conduct of additional tests, to verify that the system hardware and software perform all the functions described in the manufacturer's documentation submitted in the TDP. In addition to functioning according to the manufacturer's documentation tests will be conducted to ensure all applicable EAC 2005 VVSG requirements are met.

The FCA for this test campaign will include an assessment of the submitted modifications and will include inputs of both normal and abnormal data during test performance. This evaluation will utilize baseline test cases as well as specifically designed test cases and will include predefined election definitions for the input data.

4.8.2 Accuracy

The accuracy test ensures that each component of the voting system can each process at least 1,549,703 consecutive ballot positions correctly within the allowable target error rate. The Accuracy test is designed to test the ability of the system to "capture, record, store, consolidate and report" specific selections and absences of a selection. The required accuracy is defined as an error rate. This rate is the maximum number of errors allowed while processing a specified volume of data. In an effort to achieve this and to verify the proper functionality of the units under test, the following methods will be used to test components of the voting system:

For paper-based voting systems the ballot positions on a paper ballot must be scanned to detect selections for individual candidates and contests and the conversion of those selections detected on the paper ballot converted into digital data. The accuracy requirements for the ICC, ICP, ICP2, and ICE units will be met by the execution of the standard accuracy test utilizing pre-marked and hand-marked ballots of each ballot length supported by the system, and ballots produced by the

ICX BMD. The accuracy requirements for the ICX VVPAT BMD will be met by using the built-in vote simulation tool to cast votes on the device.

4.8.3 System Integration

System Integration is a system level test for the integrated operation of both hardware and software. It evaluates the compatibility of the voting system software components or subsystems with one another, and with other components of the voting system environment. This is determined through functional tests integrating the voting system software with the remainder of the system. During this area of testing, the system shall be configured exactly as it would for normal field use. Pro V&V personnel shall properly configure and test the system by following the procedures detailed in the D-Suite 5.17 voting system technical documentation. This includes connecting all supporting equipment and peripherals including ballot boxes, voting booths (regular and accessible), and any physical security equipment such as locks and ties.

To accomplish the test objective, two General Elections and two Primary Elections will be exercised on the voting system, as described below:

Two general elections with the following breakdowns:

- General Election GEN-01: A General Election with Straight Party held in four precincts, one of which is a split precinct. This election contains nineteen contests compiled into four ballot styles. Five of the contests are in all four ballot styles. The other fourteen contests are split between at least two of the precincts with a maximum of four different contest spread across the four precincts.
- General Election GEN-03: A General Election held in two precincts. This election contains eight contests and compiled into two ballot styles. Four of the contests are in both ballot styles. The other four contests are split between the two precincts. This election is designed to functionally test the handling of multiple ballot styles, support for at least three languages including a character-based language, support for common voting variations, and audio support for at least three languages and an ADA binary input device.

Two primary elections with the following breakdowns:

- Primary Election PRIM-01: This election is designed to functionally test a Closed Primary Election with multiple ballots and support for common voting variations. This election contains thirty-one contests and six parties compiled into eighteen ballot styles, each ballot containing six contests.
- Primary Election PRIM-03: A Closed Primary Election held in two precincts. This election contains ten contests and is compiled into two ballot styles. Two of the contests are in both ballot styles. The other eight contests are split between the two parties' ballots. This election is designed to functionally test the handling of multiple ballot

styles, support for at least three languages including a character-based language, support for common voting variations, and audio support for at least three languages and an ADA binary input device.

4.8.4 Volume & Stress

The Volume & Stress test investigates the system's response to conditions that tend to overload the system's capacity to process, store, and report data. The test parameters will focus on the system's stated limits and the ballot logic for areas such as the maximum number of active voting positions, maximum number of ballot styles, maximum candidates, maximum contests, and stated limits within the EMS. This test will be utilized to ensure the system can achieve the manufacturer's TDP claims of what the system can support. Testing will be performed by exercising multiple election definitions developed specifically to test for volume and stress conditions of the system being tested.

4.8.5 Regression Testing

Regression testing will be conducted on the D-Suite 5.17 to establish assurance that the modifications have no adverse impact on the compliance, integrity, or performance of the system

4.9 Security Functions

The objective of the Security Testing is to evaluate the effectiveness of the voting system in detecting, preventing, recording, reporting, and recovering from security threats. To evaluate the integrity of the system, Pro V&V shall develop specifically designed test cases in an attempt to defeat the access controls and security measures documented in the system TDP.

The submitted threat matrix identifying the system's risks and vulnerabilities shall be evaluated for completeness and to determine that mitigating controls are adequately implemented. An evaluation of the system shall be accomplished by utilizing a combination of functional testing and source code review. All findings will be reported to the EAC and Dominion.

The test methods for performing the Security Testing are execution and review. Prior to performance of Security testing, the examiner will verify that security hardening scripts have been properly applied to system components per the system documentation. The examiner will review the submitted TDP to verify that documented access and physical controls are in place. Following the documented procedures, the examiner will configure the voting system for use and functionality to verify that the documented controls are in place and adequate and meet the stated requirements.

Physical Security will be tested by setting up the system as described in the TDP and then examining the effectiveness and comprehensiveness of physical security measures.

Administrative Security will be tested by examining the system's documented security instructions and procedures for effectiveness and breadth.

Logical security will be tested as part of FCA testing by a recognized security expert who not only will review the physical and administrative testing outcomes, but will perform the following tests on system components: Vulnerability Scans, SCAP Scans, and Physical Bypass Attempts. Logical security testing will assess the effectiveness of the security hardening scripts applied during the system setup and install process.

4.10 Usability & Accessibility Testing

Usability & Accessibility Testing will be performed to evaluate the usability of the new components of the D-Suite 5.17 to the requirements set forth in the EAC VVSG 1.0.

4.11 Hardware Testing

Previous hardware examinations were performed on the certified baseline system (D-Suite 5.5-D). The ICX updates to the allowable COTS printer models require the following hardware testing to be performed.

Electrical Tests:

- Electrical Power Disturbance
- Electromagnetic Radiation
- Electrostatic Disruption
- Electromagnetic Susceptibility
- Electrical Fast Transient
- Lightning Surge
- Conducted RF Immunity
- Magnetic Fields Immunity
- Electrical Supply

Environmental Tests:

- Temperature Power Variation

5.0 TEST DATA

The following subsections provide information concerning test data recording, criteria, and reduction.

5.1 Test Data Recording

All equipment utilized for test data recording shall be identified in the test data package. The output test data shall be recorded in an appropriate manner as to allow for data analysis.

For source code and TDP reviews, results shall be compiled in reports and submitted to Dominion for resolution.

5.2 Test Data Criteria

The D-Suite 5.17 Voting System shall be evaluated against all applicable requirements contained in the EAC 2005 VVSG. The acceptable range for system performance and the expected results for each test case shall be derived from the manufacturer-submitted technical documentation and the EAC 2005 VVSG.

6.0 TEST PROCEDURE AND CONDITIONS

The following subsections detail the facility requirements, test setup conditions, and sequence of testing.

6.1 Facility Requirements

Unless otherwise annotated, all testing shall be conducted at the Pro V&V test facility located in Huntsville, AL, by personnel verified by Pro V&V to be qualified to perform the test. Unless otherwise specified herein, testing shall be performed at the following standard ambient conditions and tolerances:

- Temperature: 68-75° F ($\pm 3.6^\circ\text{F}$)
- Relative Humidity: Local Site Humidity
- Atmospheric Pressure: Local Site Pressure
- Time Allowable Tolerance: $\pm 5\%$

Testing performed at third-party laboratories will be subjected to the test parameters and tolerances defined by the test facility and will be reported in the final Test Report.

6.2 Test Set-up

All voting system equipment shall be received and documented using Pro V&V proper QA procedures. Upon receipt of all hardware, an inspection will be performed to verify that the equipment received is free from obvious signs of damage and/or degradation that may have occurred during transit. If present, this damage shall be recorded, photographed, and reported to the Dominion Representative. Additionally, a comparison shall be made between the recorded serial numbers/part numbers and those listed on shipper's manifest and any discrepancies shall be reported to the Dominion Representative. TDP items and all source code received shall be inventoried and maintained by Pro V&V during the test campaign.

During test performance, the system shall be configured as it would be for normal field use. This includes connecting all supporting equipment and peripherals.

6.3 Test Sequence

The D-Suite 5.17 Voting System will be evaluated against all applicable requirements in the EAC 2005 VVSG. There is no required sequence for test performance.

6.4 Test Operations Procedure

Pro V&V will identify PASS/FAIL criteria for each executed test case. The PASS/FAIL criteria will be based on the specific expected results of the system. In the case of an unexpected result that deviates from what is considered standard, normal, or expected, a root cause analysis will be performed.

Pro V&V will evaluate every EAC 2005 VVSG requirement applicable to the Democracy Suite 5.17 voting system. Any deficiencies noted will be reported to the EAC and the manufacturer. If it is determined that there is insufficient data to determine compliance, this test plan will be altered and additional testing will be performed.

APPENDIX A
PROJECT SCHEDULE

Task Name	Start Date	End Date	% Complete	Duration	Status
EAC Application & TRR	10/03/22	10/14/22	100%	10d	Complete
Application Submitted to EAC	10/03/22	10/03/22	100%	1d	Complete
TRR	10/10/22	10/12/22	100%	3d	Complete
Application Approval from EAC	10/13/22	10/14/22	100%	2d	Complete
TDP	10/10/22	12/12/22	0%	44d	In Progress
Initial Review	10/10/22	10/11/22	0%	2d	In Progress
Compliance Review	10/12/22	12/08/22	0%	40d	Not Started
Final review	12/09/22	12/12/22	0%	2d	Not Started
Test Plan	10/17/22	12/13/22	15%	40d	In Progress
Test Plan Creation	10/17/22	10/21/22	100%	5d	Complete
Vendor Review & Comments	10/24/22	10/25/22	50%	2d	Complete
EAC Submission and Review	10/26/22	11/22/22	0%	20d	Not Started
VSTL Comment Review & Update	11/23/22	11/28/22	0%	2d	Not Started
EAC Submission & Review of Revision	11/29/22	12/12/22	0%	10d	Not Started
EAC Approved Test Plan	12/13/22	12/13/22	0%	1d	Not Started
Source Code	10/03/22	11/15/22	24%	32d	In Progress
Automated Review	10/03/22	10/05/22	50%	3d	In Progress
Source Code Review	10/03/22	11/02/22	30%	23d	In Progress
Source Code Re-Review	11/03/22	11/09/22	0%	5d	Not Started
Document Review	11/10/22	11/10/22	0%	1d	Not Started
Compliance Build	11/11/22	11/15/22	0%	3d	Not Started
System Delivery & Setup	10/04/22	11/17/22	60%	33d	In Progress
PCA	10/04/22	10/04/22	100%	1d	Complete
System Setup	10/05/22	10/06/22	100%	2d	Complete
System Loads & Hardening	11/16/22	11/17/22	0%	2d	Not Started
Hardware Testing	10/17/22	10/31/22	80%	11d	In Progress
Electrical Testing (2 configuration)	10/17/22	10/26/22	100%	8d	Complete
Temp Power (64 hours based on 3 configurations under test)	10/17/22	10/20/22	100%	4d	Complete
Maintainability	10/27/22	10/27/22	0%	1d	Not Started
Electrical Supply	10/28/22	10/31/22	0%	2d	Not Started
System Level Testing	10/27/22	12/21/22	0%	38d	Not Started
FCA	10/27/22	11/09/22	0%	10d	Not Started
Security	11/10/22	11/16/22	0%	5d	Not Started
Usability	11/17/22	11/17/22	0%	1d	Not Started
Volume and Stress	11/18/22	11/21/22	0%	2d	Not Started
Accuracy	11/22/22	12/05/22	0%	8d	Not Started
Regression Testing	12/06/22	12/06/22	0%	1d	Not Started
Trusted Build	12/07/22	12/09/22	0%	3d	Not Started
System Loads & Hardening	12/12/22	12/14/22	0%	3d	Not Started

System Integration	12/15/22	12/21/22	0%	5d	Not Started
Test Report	12/22/22	02/21/23	0%	39d	Not Started
Test Report Creation	12/22/22	01/04/23	0%	5d	Not Started
Vendor Review & Comments	01/05/23	01/05/23	0%	1d	Not Started
EAC Submission & Review	01/06/23	02/02/23	0%	20d	Not Started
VSTL Comment Review & Update	02/03/23	02/06/23	0%	2d	Not Started
EAC Submission & Review of Revision	02/07/23	02/20/23	0%	10d	Not Started
EAC Approved Test Report	02/21/23	02/21/23	0%	1d	Not Started